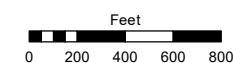
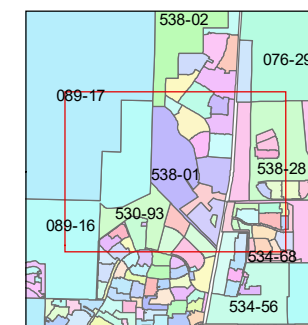
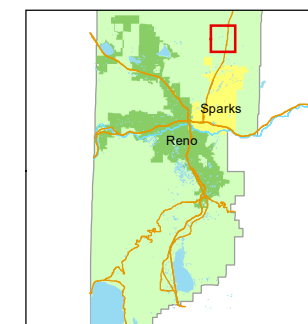


STATE OF NEVADA  
**WASHOE COUNTY**  
**ASSESSOR'S OFFICE**

1001 East Ninth Street, Building D  
Reno, Nevada 89512  
(775) 328-2231



1 inch = 800 feet



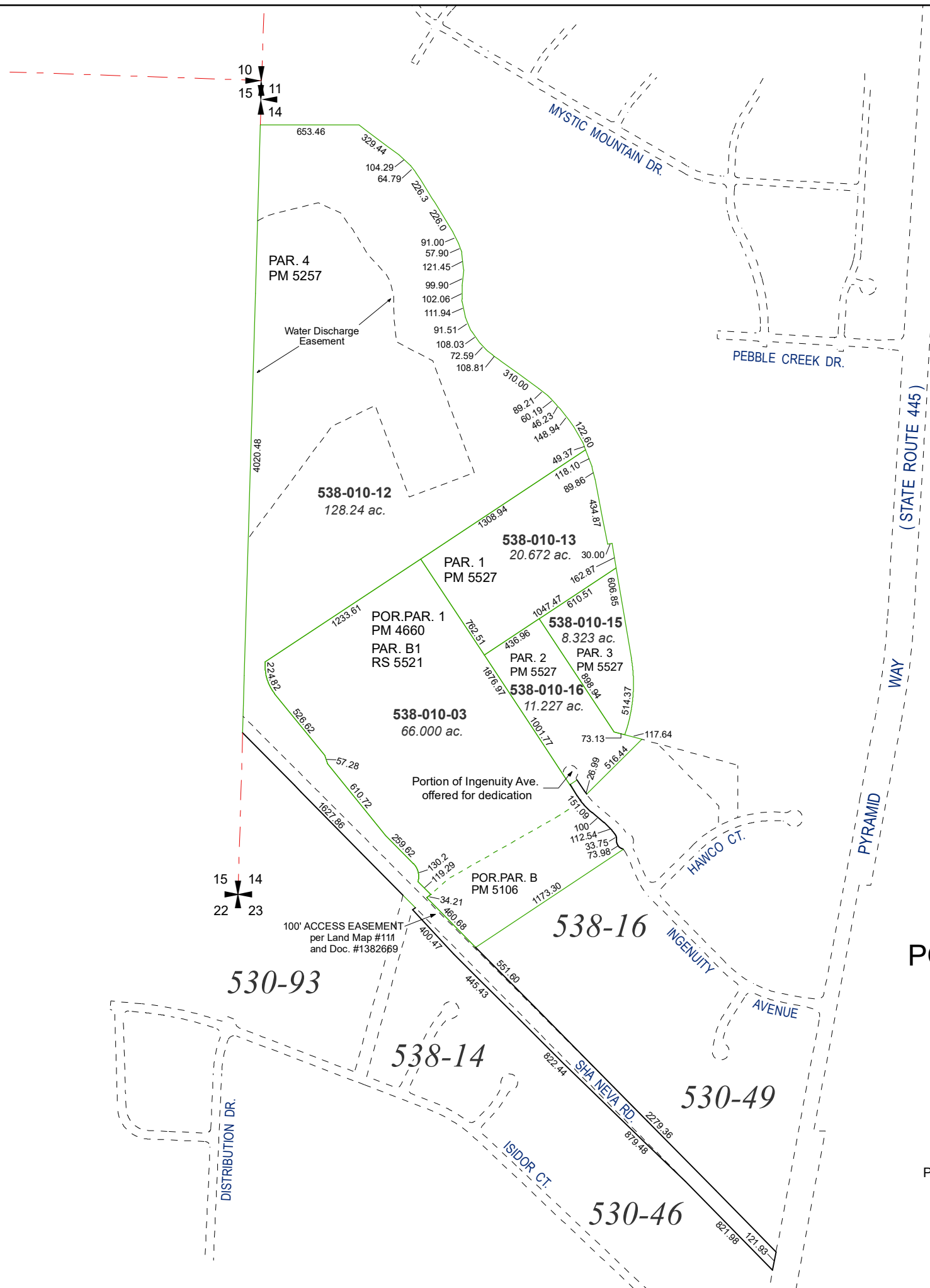
created by: KSB 02/19/2010

updated: JRA 07/07/21 SR 05/06/22

area previously shown on map(s):

530-28

NOTE: This map was prepared for the use of the Washoe County Assessor for assessment and illustrative purposes only. It does not represent a survey of the premises. No liability is assumed as to the sufficiency or accuracy of the data delineated hereon.



**PORTIONS OF SECTIONS**  
**14 & 23**  
**T21N - R20E**

Portion of Ingenuity Avenue Offered  
for Dedication per PM 5124  
Accepted per Doc. #4506782