

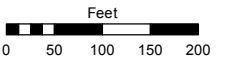
POR. OF S 1/2 SECTION 1
T20N - R20E

Assessor's Map Number

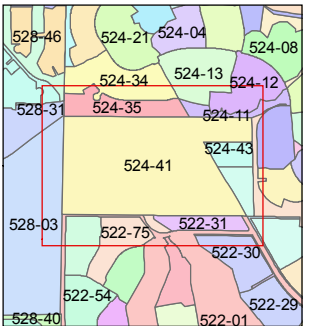
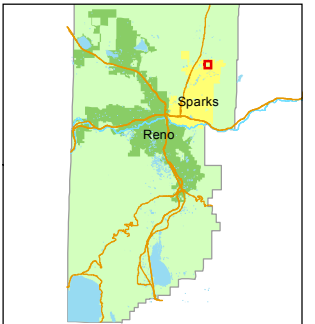
524-41

STATE OF NEVADA
WASHOE COUNTY
ASSESSOR'S OFFICE

1001 East Ninth Street, Building D
Reno, Nevada 89512
(775) 328-2231



1 inch = 200 feet



created by: NLH 02/16/2010

updated: KSB 06/26/18 SR 03/28/19

area previously shown on map(s):

083-05

NOTE: This map was prepared for the use of the Washoe County Assessor for assessment and illustrative purposes only. It does not represent a survey of the premises. No liability is assumed as to the sufficiency or accuracy of the data delineated hereon.

