

524-33

524-36

524-39

524-40

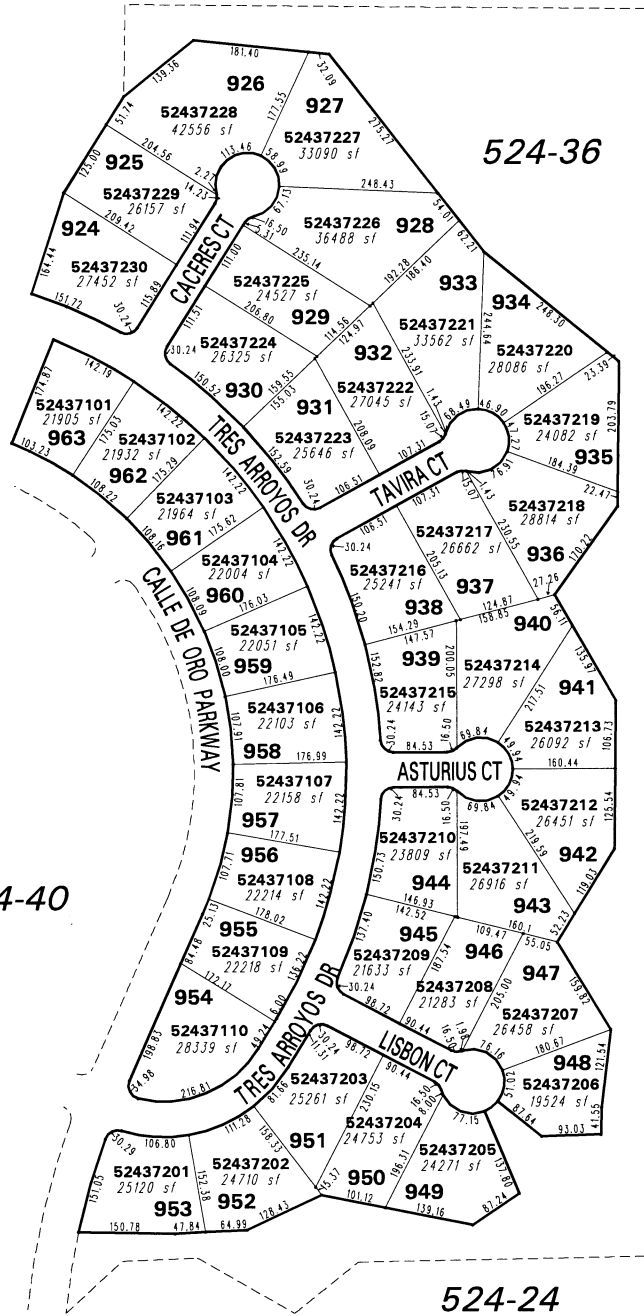
524-24

Office of Washoe County Assessor, Nevada - Robert W. McGowan

(#3819) CIMARRON UNIT 9 PHASE 2

A PLANNED RESIDENTIAL COMMUNITY PORTION OF N1/2 SECTION 1 T20N - R20E

BOOK 84 - PG 27



NOTE: This map is prepared for the use of the Washoe County Assessor for assessment and illustrative purposes only. It does not represent a survey of the premises. No liability is assumed as to the sufficiency or the accuracy of the data delineated hereon.

This area previously shown on 524-31

NOTE: Areas of parcels which are less than 2 acres are shown in square feet.

Drawn by	DSR	05/04/00
Revised	KS	9/29/00

