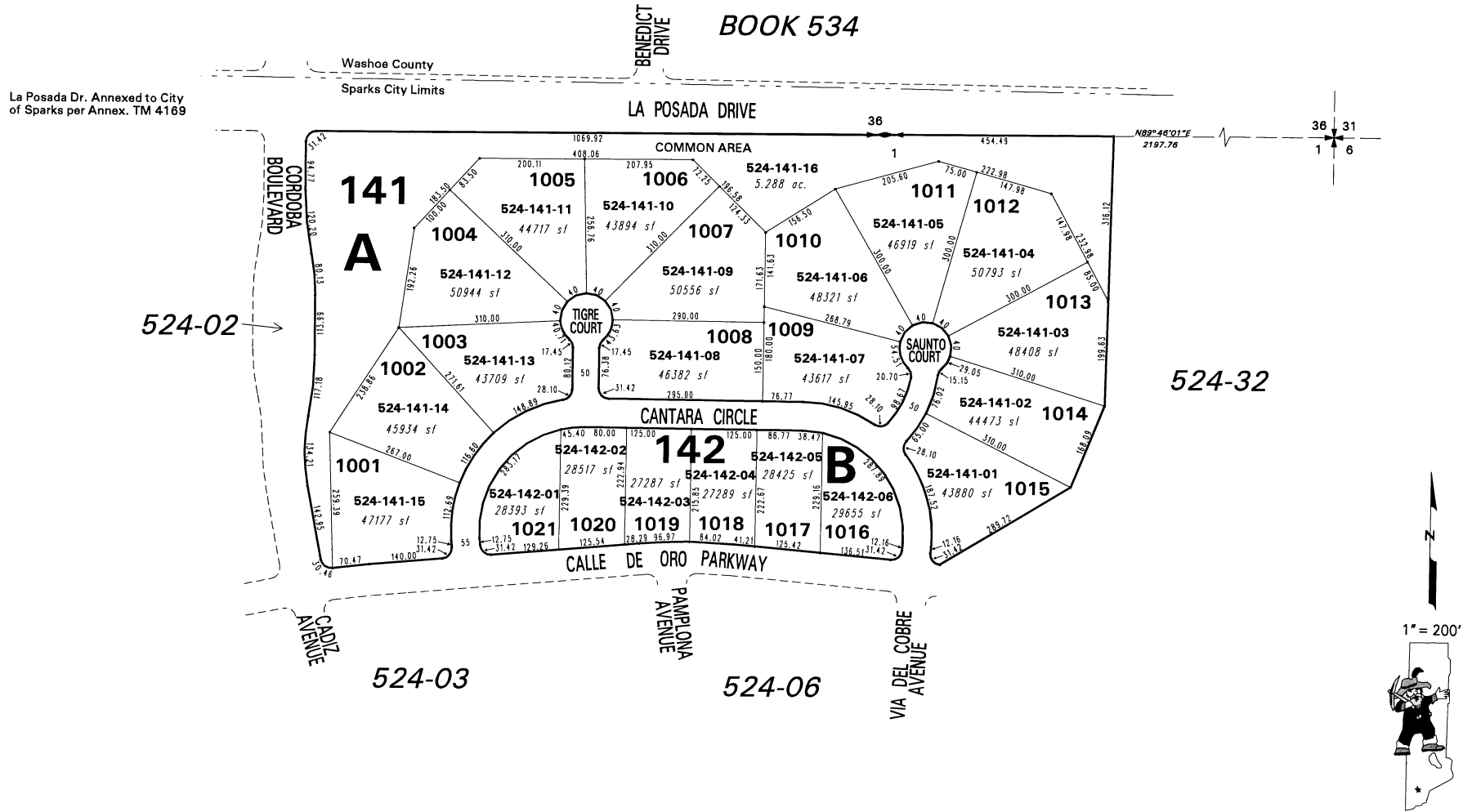


CIMARRON UNIT TEN (#3372) POR. N 1/2 SEC. 1, T20N - R20E

BOOK 534



La Posada Dr. Annexed to City of Sparks per Annex. TM 4169

524-02

524-32

524-03

524-06

NOTE: This map is prepared for the use of the Washoe County Assessor for assessment and illustrative purposes only. It does not represent a survey of the premises. No liability is assumed as to the sufficiency or the accuracy of the data delineated hereon.

Office of Washoe County Assessor, Nevada - Robert W. McGowan

This area previously shown on 522-46

NOTE: Areas of parcels which are less than 2 acres are shown in square feet.

Drawn by	GZ 4/28/97
Revised	CEB 12/2/99 KSB 5/01/03