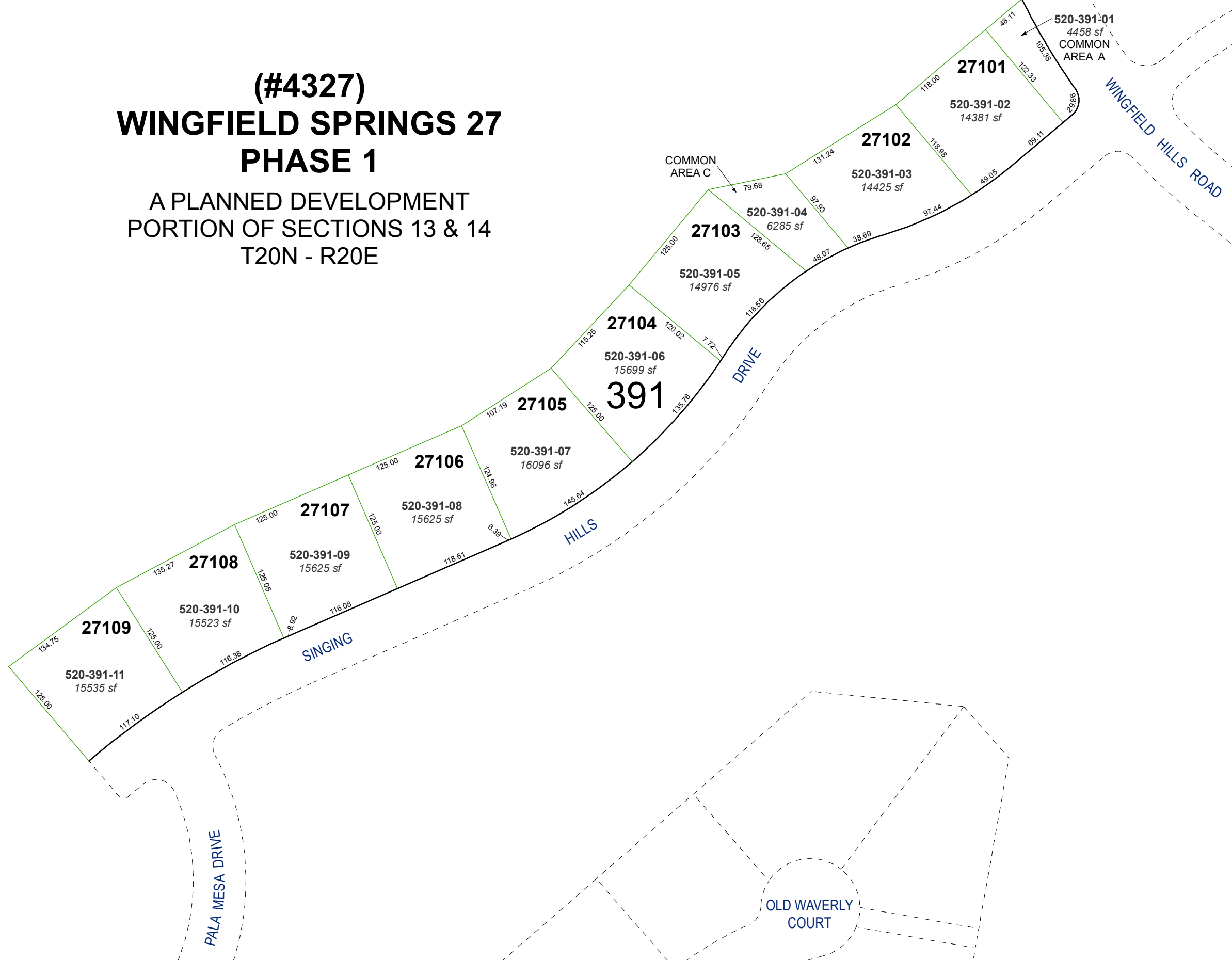


**(#4327)**  
**WINGFIELD SPRINGS 27**  
**PHASE 1**

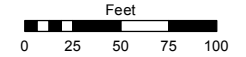
A PLANNED DEVELOPMENT  
 PORTION OF SECTIONS 13 & 14  
 T20N - R20E



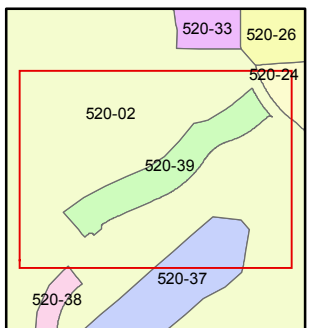
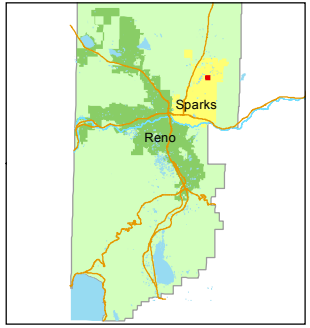
Assessor's Map Number  
**520-39**

STATE OF NEVADA  
**WASHOE COUNTY**  
**ASSESSOR'S OFFICE**  
 Joshua G. Wilson, Assessor

1001 East Ninth Street  
 Building D  
 Reno, Nevada 89512  
 (775) 328-2231



1 inch = 100 feet



created by: EMG 4/3/2014

last updated: \_\_\_\_\_

area previously shown on map(s)  
520-02

NOTE: This map was prepared for the use of the Washoe County Assessor for assessment and illustrative purposes only. It does not represent a survey of the premises. No liability is assumed as to the sufficiency or accuracy of the data delineated herein.