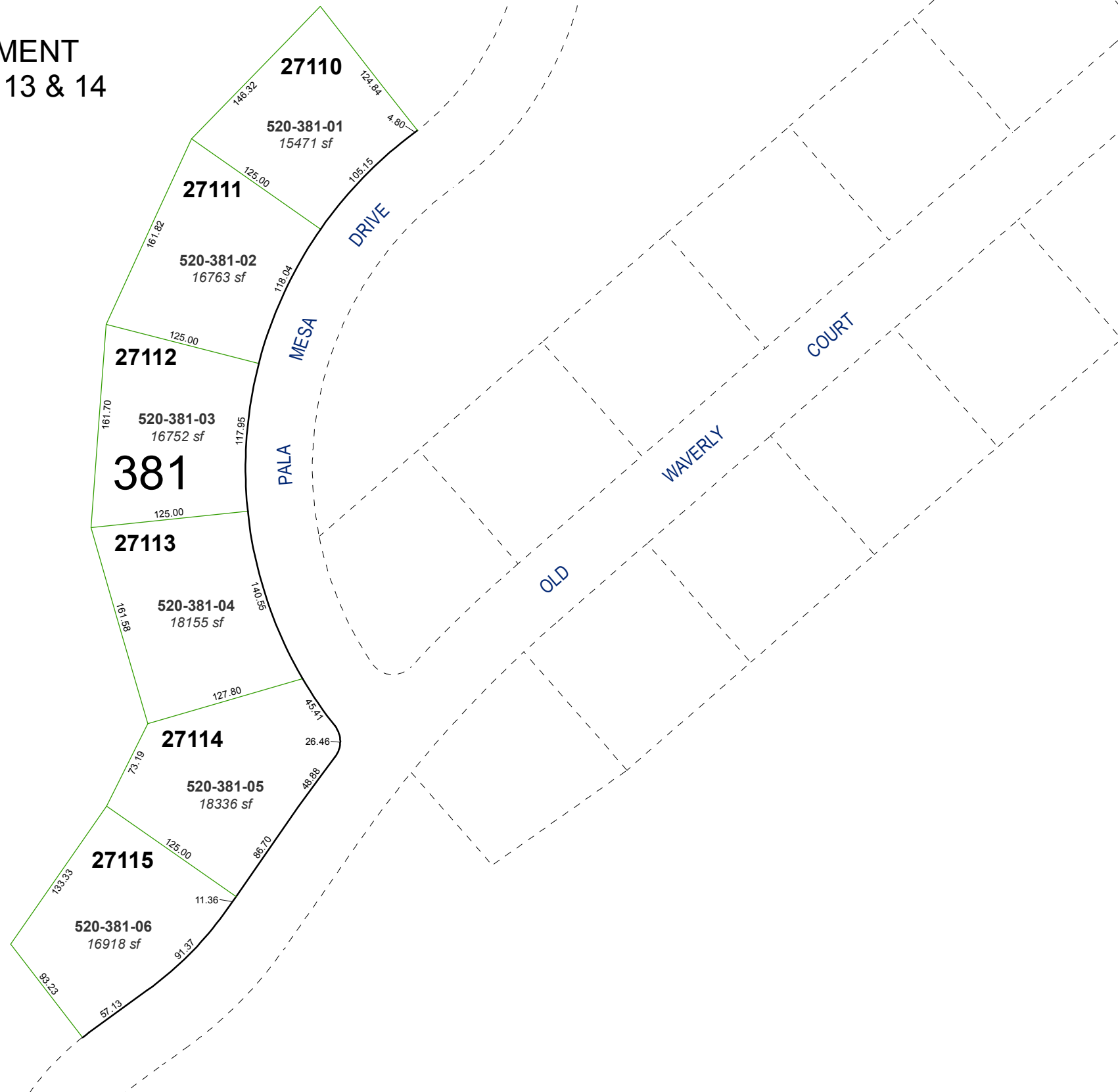


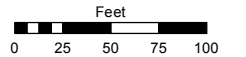
(#4327)
WINGFIELD SPRINGS 27
PHASE 1
 A PLANNED DEVELOPMENT
 PORTION OF SECTIONS 13 & 14
 T20N - R20E



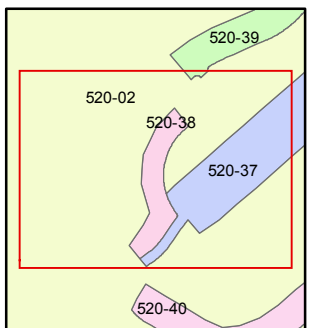
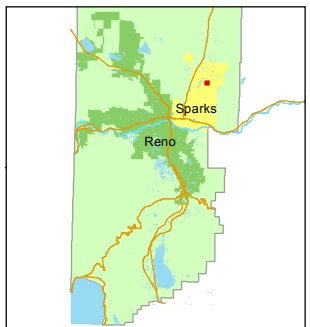
Assessor's Map Number
520-38

STATE OF NEVADA
WASHOE COUNTY
ASSESSOR'S OFFICE
 Joshua G. Wilson, Assessor

1001 East Ninth Street
 Building D
 Reno, Nevada 89512
 (775) 328-2231



1 inch = 100 feet



created by: EMG 4/3/2014

last updated: _____

area previously shown on map(s)

520-02

NOTE: This map was prepared for the use of the Washoe County Assessor for assessment and illustrative purposes only. It does not represent a survey of the premises. No liability is assumed as to the sufficiency or accuracy of the data delineated hereon.