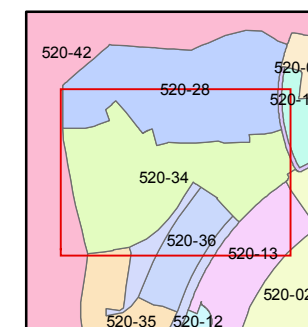
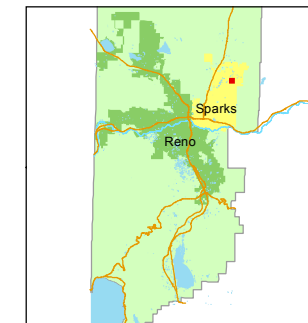




1 inch = 100 feet



created by: EMG 4/3/2014

last updated: _____

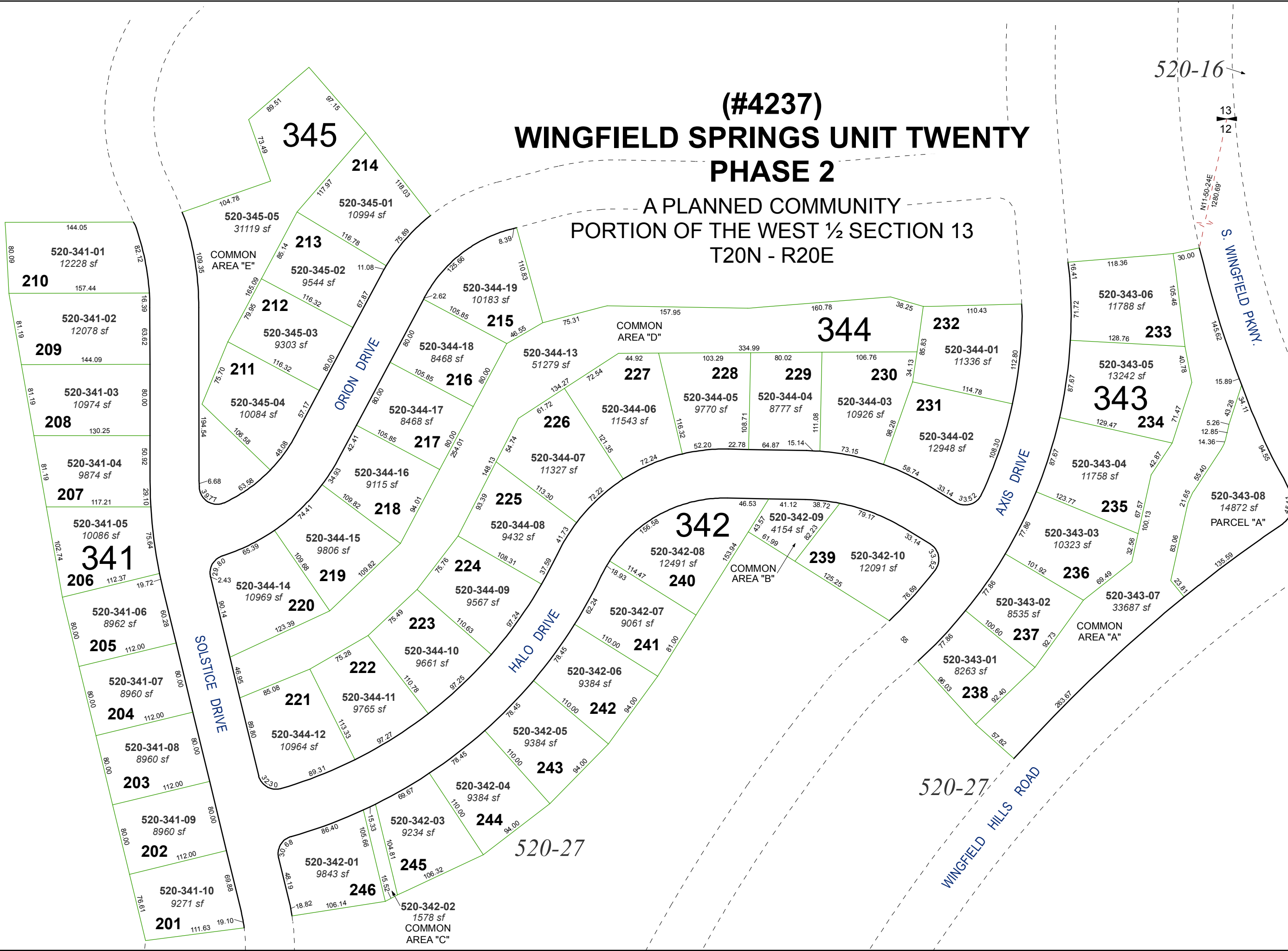
area previously shown on map(s)

520-27

NOTE: This map was prepared for the use of the Washoe County Assessor for assessment and illustrative purposes only. It does not represent a survey of the premises. No liability is assumed as to the sufficiency or accuracy of the data delineated hereon.

(#4237) WINGFIELD SPRINGS UNIT TWENTY PHASE 2

A PLANNED COMMUNITY PORTION OF THE WEST 1/2 SECTION 13 T20N - R20E



520-16

13
12

520-27

WINGFIELD HILLS ROAD

S. WINGFIELD PKWY.

ORION DRIVE

HALO DRIVE

SOLSTICE DRIVE

AXIS DRIVE

345

214

213

520-345-01
10994 sf

520-345-05
31119 sf

212

520-345-02
9544 sf

211

520-345-03
9303 sf

210

520-341-01
12228 sf

520-341-02
12078 sf

520-341-03
10974 sf

520-341-04
9874 sf

520-341-05
10086 sf

341

206

520-341-06
8962 sf

205

520-341-07
8960 sf

204

520-341-08
8960 sf

203

520-341-09
8960 sf

202

520-341-10
9271 sf

201

520-344-19
10183 sf

215

520-344-18
8468 sf

216

520-344-17
8468 sf

217

520-344-16
9115 sf

218

520-344-15
9806 sf

219

520-344-14
10969 sf

220

520-344-13
51279 sf

221

520-344-12
10964 sf

222

520-344-11
9765 sf

223

520-344-10
9661 sf

224

520-344-09
9567 sf

225

520-344-08
9432 sf

226

520-344-07
11327 sf

227

520-344-06
11543 sf

228

520-344-05
9770 sf

229

520-344-04
8777 sf

230

520-344-03
10926 sf

231

520-344-02
12948 sf

232

520-344-01
11336 sf

233

520-343-06
11788 sf

234

520-343-05
13242 sf

235

520-343-04
11758 sf

236

520-343-03
10323 sf

237

520-343-02
8535 sf

238

520-343-01
8263 sf

239

520-342-09
4154 sf

240

520-342-08
12491 sf

241

520-342-07
9061 sf

242

520-342-06
9384 sf

243

520-342-05
9384 sf

244

520-342-04
9384 sf

245

520-342-03
9234 sf

246

520-342-02
1578 sf
COMMON AREA "C"

COMMON AREA "D"

COMMON AREA "B"

COMMON AREA "A"

COMMON AREA "E"