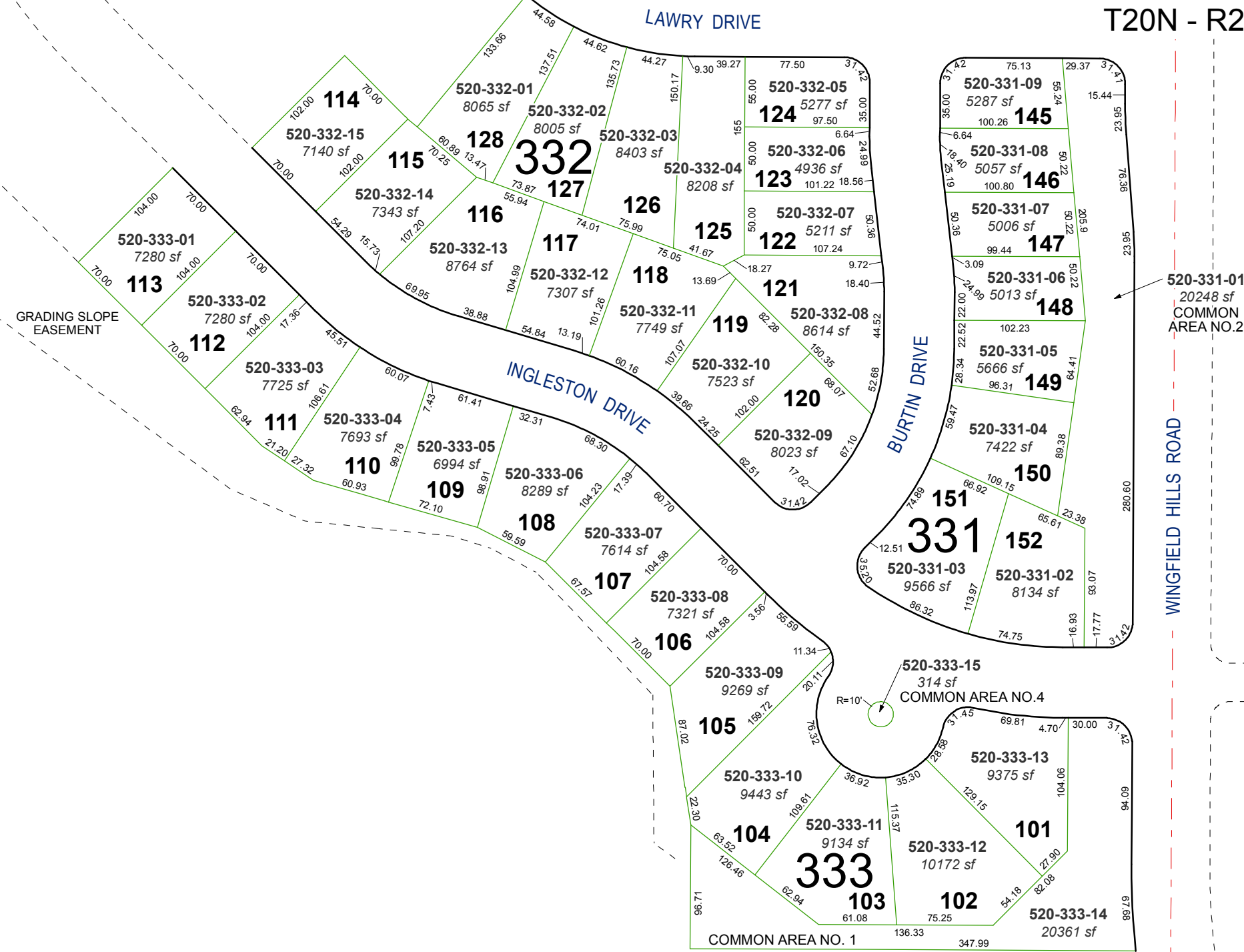


(#4213) WINGFIELD SPRINGS UNIT TWENTY-SIX A

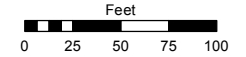
A PLANNED COMMUNITY
PORTION OF THE NE ¼ SECTION 14
T20N - R20E



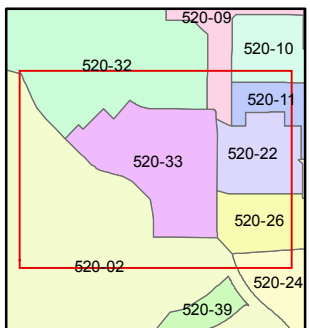
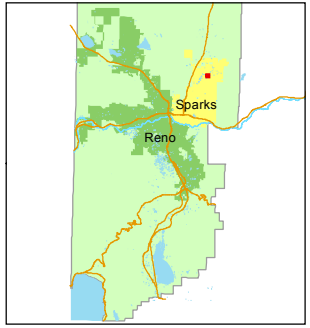
Assessor's Map Number
520-33

STATE OF NEVADA
WASHOE COUNTY
ASSESSOR'S OFFICE
Joshua G. Wilson, Assessor

1001 East Ninth Street
Building D
Reno, Nevada 89512
(775) 328-2231



1 inch = 100 feet



created by: EMG 4/2/2014

last updated: _____

area previously shown on map(s)
520-02

NOTE: This map was prepared for the use of the Washoe County Assessor for assessment and illustrative purposes only. It does not represent a survey of the premises. No liability is assumed as to the sufficiency or accuracy of the data delineated hereon.