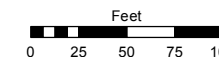


Assessor's Map Number

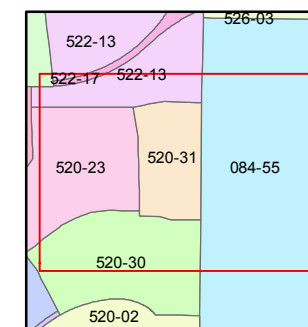
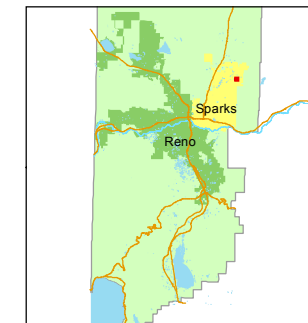
**520-31**

STATE OF NEVADA  
**WASHOE COUNTY**  
**ASSESSOR'S OFFICE**  
Joshua G. Wilson, Assessor

1001 East Ninth Street  
Building D  
Reno, Nevada 89512  
(775) 328-2231



1 inch = 100 feet



created by: EMG 4/2/2014

last updated: \_\_\_\_\_

area previously shown on map(s)

520-16

NOTE: This map was prepared for the use of the Washoe County Assessor for assessment and illustrative purposes only. It does not represent a survey of the premises. No liability is assumed as to the sufficiency or accuracy of the data delineated hereon.

VISTA BOULEVARD

TEN MILE DRIVE

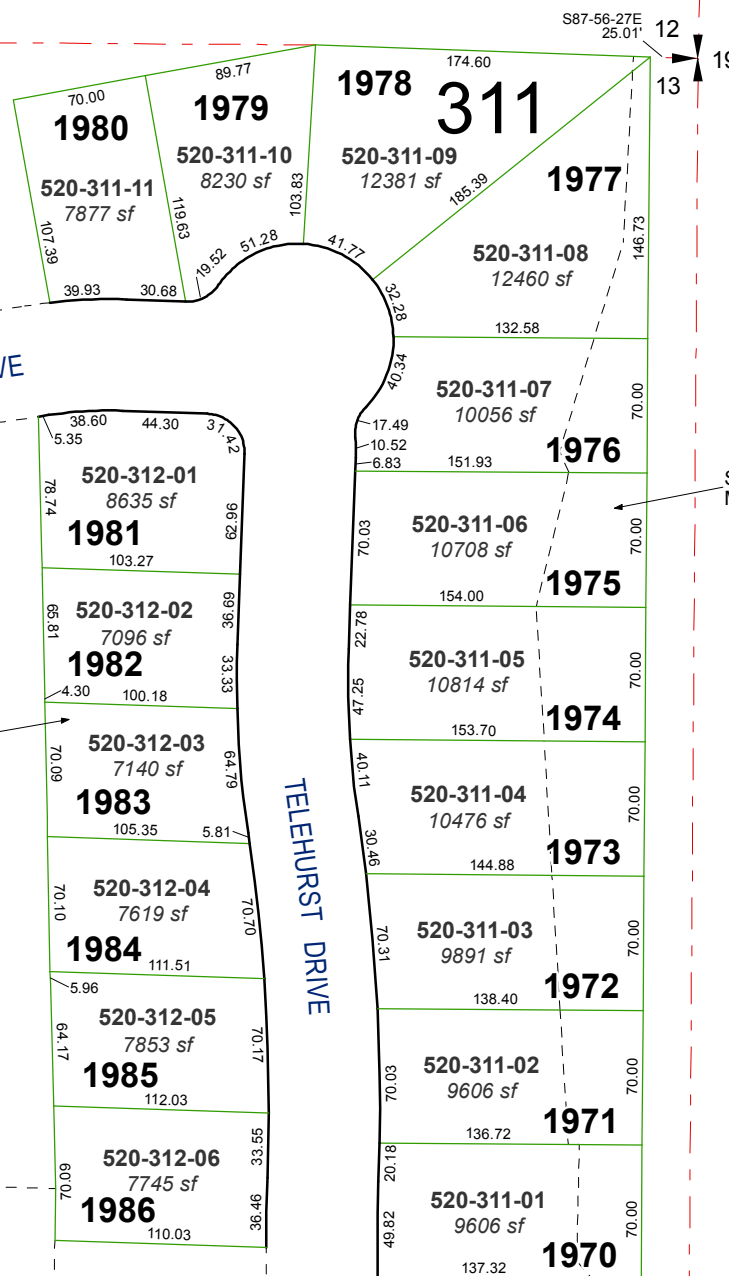
TEN MILE COURT

312

TELEHURST DRIVE

BANESTONE ROAD

BOYLE COURT



SLOPE, ACCESS, AND MAINT. EASEMENT

# (#4194) WINGFIELD SPRINGS UNIT NINETEEN-B PHASE TWO

A PLANNED COMMUNITY  
PORTION OF NORTH 1/2 SECTION 13  
T20N - R20E