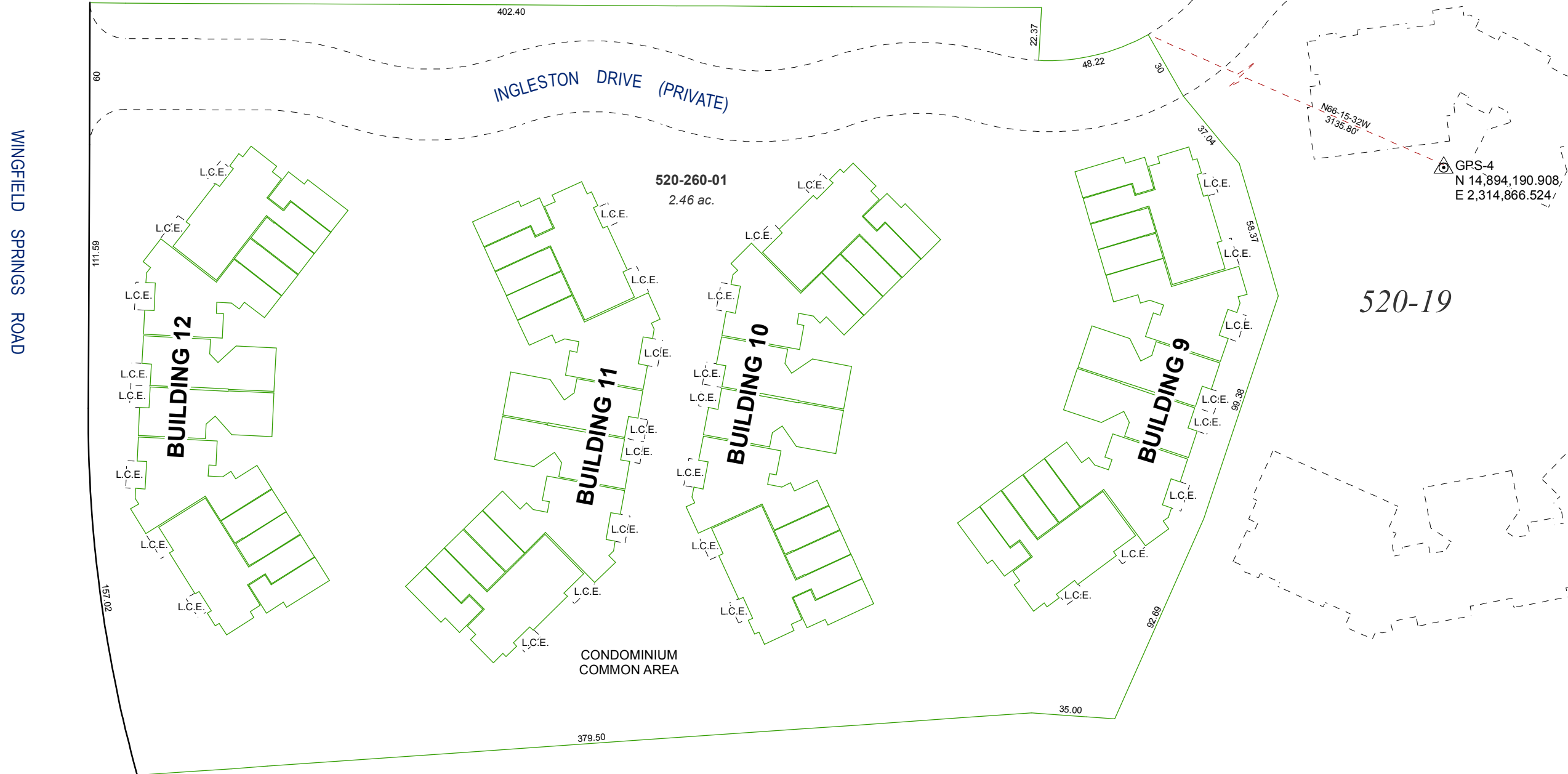


**(#4095)**  
**WINGFIELD SPRINGS UNIT TWENTY-FOUR - C**  
**PHASE TWO**

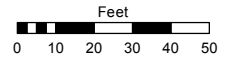
A CONDOMINIUM - PLANNED DEVELOPMENT  
 PORTION OF THE NW ¼ SEC. 13  
 T20N - R20E



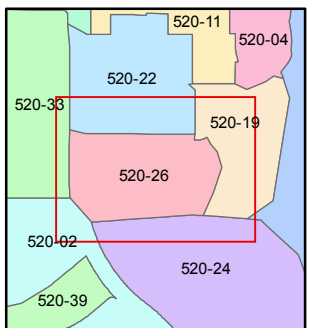
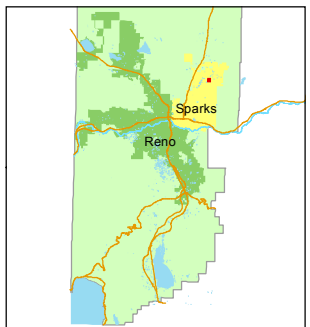
Assessor's Map Number  
**520-26**

STATE OF NEVADA  
**WASHOE COUNTY**  
**ASSESSOR'S OFFICE**  
 Joshua G. Wilson, Assessor

1001 East Ninth Street  
 Building D  
 Reno, Nevada 89512  
 (775) 328-2231



1 inch = 50 feet



created by: EMG 6/23/2014

last updated: \_\_\_\_\_

area previously shown on map(s)

520-02

NOTE:  
 TOTAL AREA SHOWN FOR CONDOMINIUM  
 COMMON AREA INCLUDES WALLSPACE AND  
 LIMITED COMMON ELEMENT AREAS.

NOTE: This map was prepared for the use of the Washoe County Assessor for assessment and illustrative purposes only. It does not represent a survey of the premises. No liability is assumed as to the sufficiency or accuracy of the data delineated hereon.