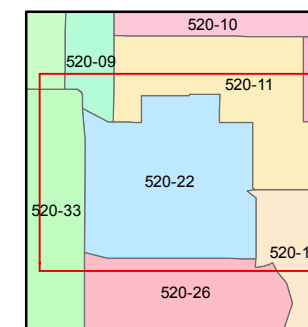
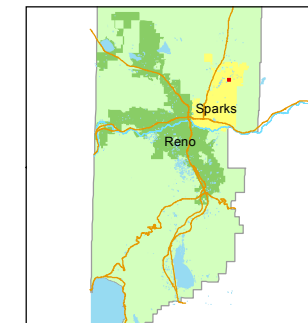


1 inch = 50 feet



created by: EG 3/31/2014

last updated: _____

area previously shown on map(s)

520-02

NOTE: This map was prepared for the use of the Washoe County Assessor for assessment and illustrative purposes only. It does not represent a survey of the premises. No liability is assumed as to the sufficiency or accuracy of the data delineated hereon.

(#4000) WINGFIELD SPRINGS UNIT TWENTY-FOUR D

A PLANNED COMMUNITY POR. OF THE NW ¼ SEC. 13 T20N - R20E

LAWRY DRIVE

520-220-38
5520 sf

WINGFIELD HILLS ROAD

BLACK GYPSUM COURT

