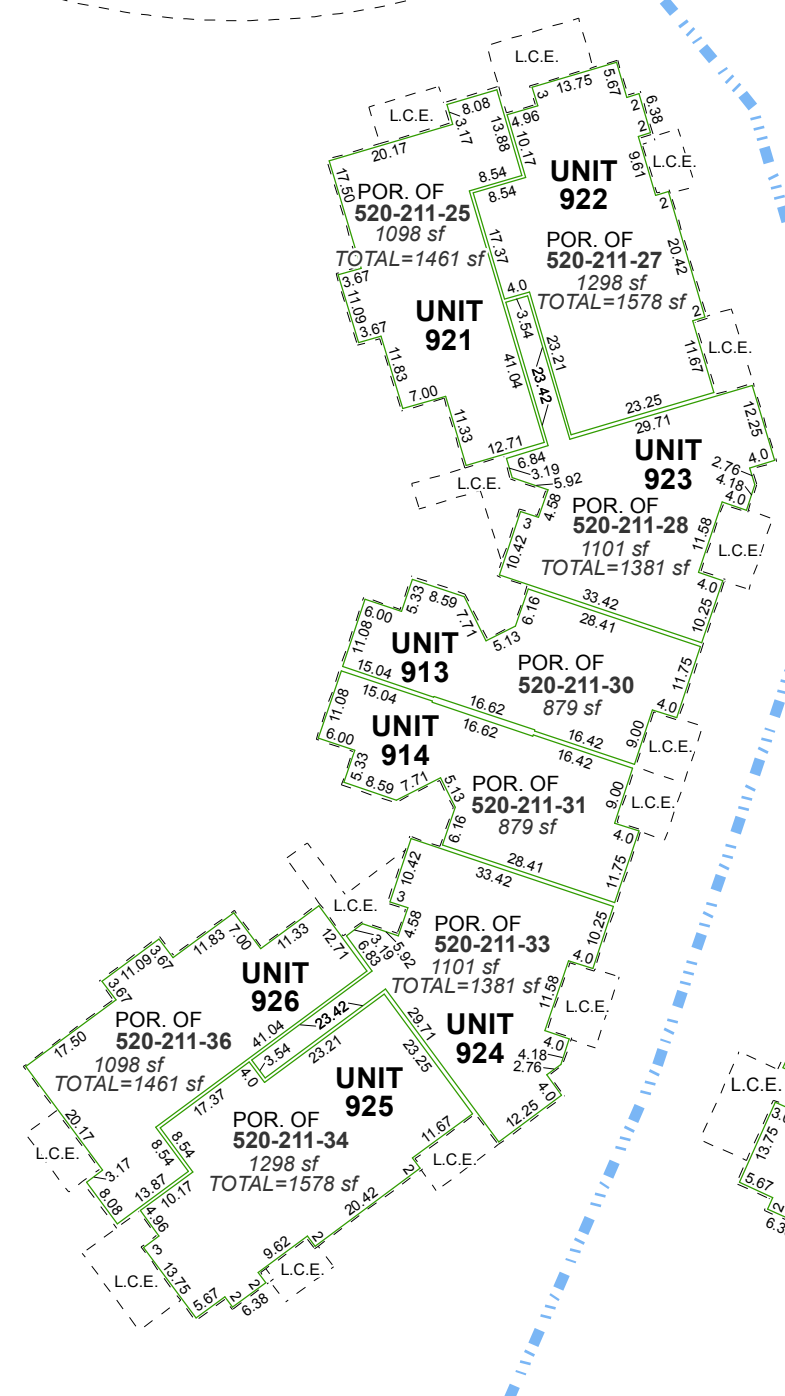
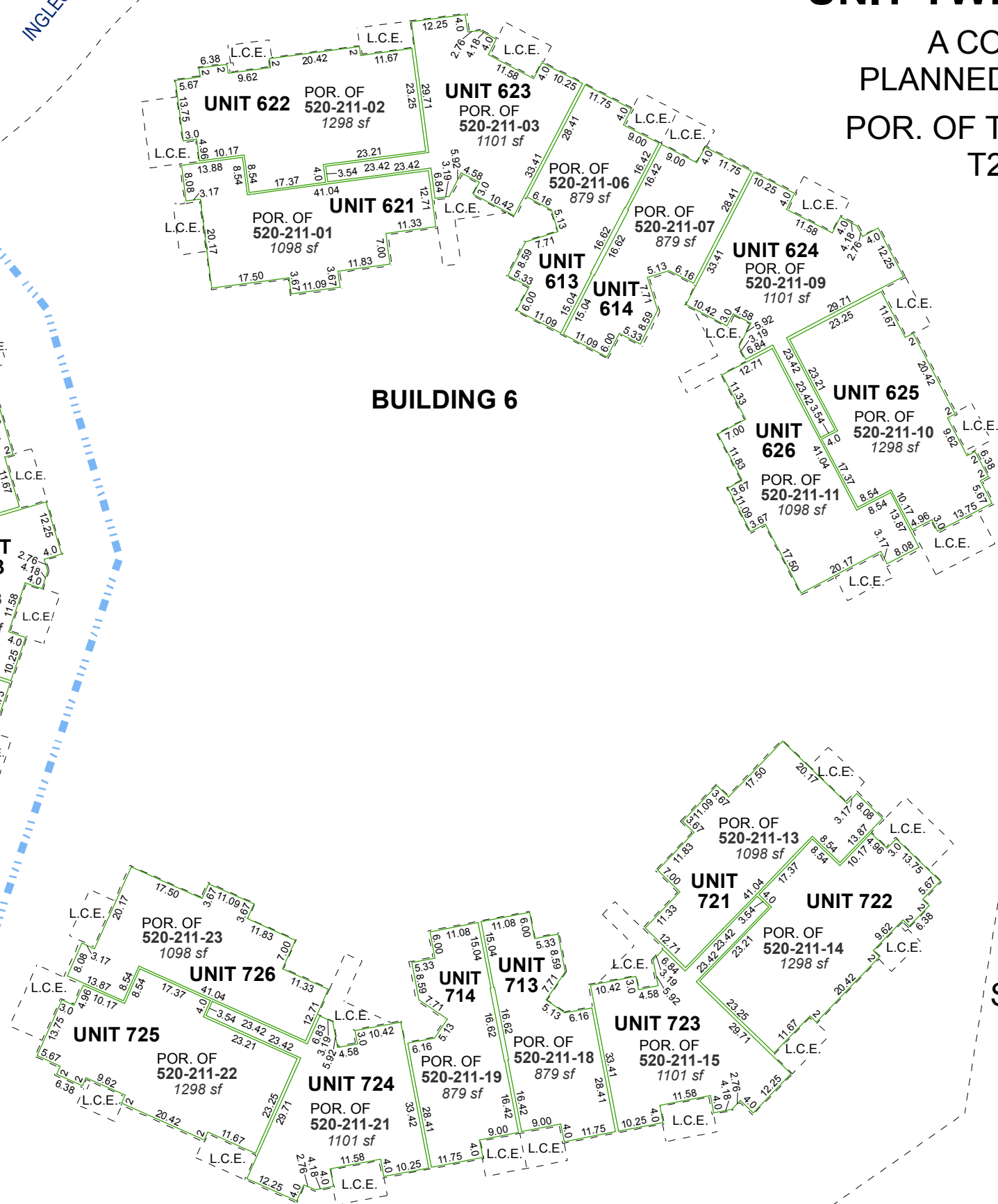


**(#4095)**  
**WINGFIELD SPRINGS**  
**UNIT TWENTY-FOUR - C**  
**PHASE TWO**  
 A CONDOMINIUM  
 PLANNED DEVELOPMENT



**BUILDING 9**



**BUILDING 6**

**BUILDING 7**

**(#3880)**  
**WINGFIELD SPRINGS**  
**UNIT TWENTY-FOUR - C**  
 A CONDOMINIUM  
 PLANNED DEVELOPMENT  
 POR. OF THE NW ¼ SEC. 13  
 T20N - R20E

520-20  
 INGLESTON DRIVE

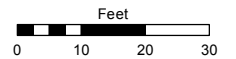
**SECOND FLOOR UNITS**

NOTES:  
 DIMENSIONS AND UNIT AREAS GIVEN  
 ARE TO INSIDE WALLS  
 SEE 520-21 FOR FIRST FLOOR  
 DIMENSIONS AND TOTAL AREAS  
 OF THE UNITS  
 L.C.E. = LIMITED COMMON ELEMENT

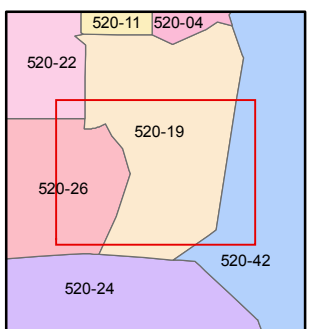
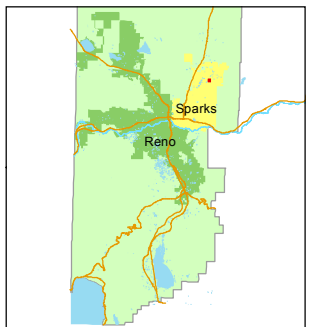
Assessor's Map Number  
**520-21-S1**

STATE OF NEVADA  
**WASHOE COUNTY**  
**ASSESSOR'S OFFICE**  
 Joshua G. Wilson, Assessor

1001 East Ninth Street  
 Building D  
 Reno, Nevada 89512  
 (775) 328-2231



1 inch = 30 feet



created by: EMG 8/27/2014

last updated: \_\_\_\_\_

area previously shown on map(s)

520-02

NOTE: This map was prepared for the use of the Washoe County Assessor for assessment and illustrative purposes only. It does not represent a survey of the premises. No liability is assumed as to the sufficiency or accuracy of the data delineated hereon.