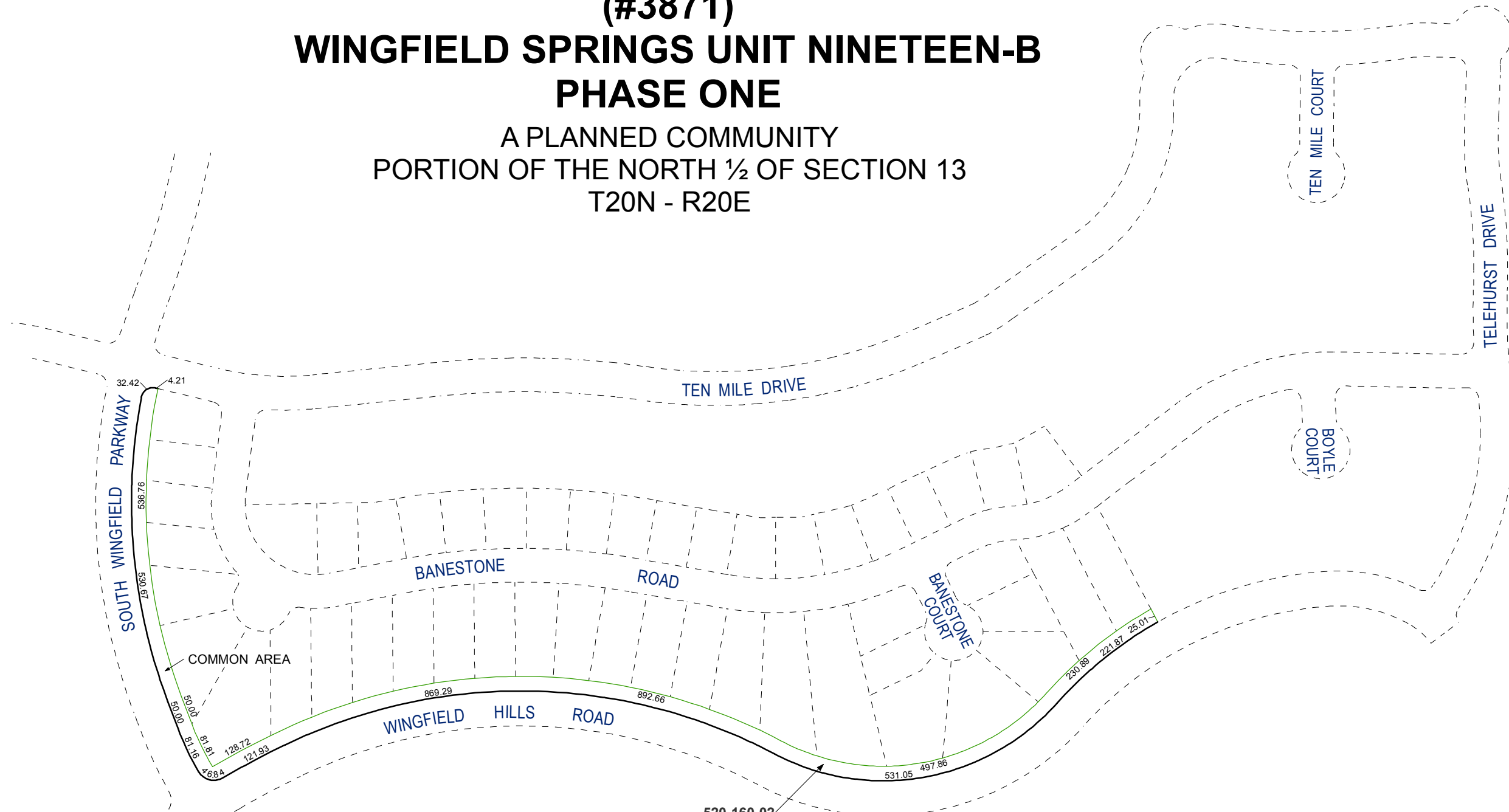


**(#3871)**  
**WINGFIELD SPRINGS UNIT NINETEEN-B**  
**PHASE ONE**

A PLANNED COMMUNITY  
 PORTION OF THE NORTH ½ OF SECTION 13  
 T20N - R20E

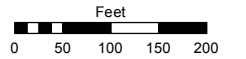


Assessor's Map Number

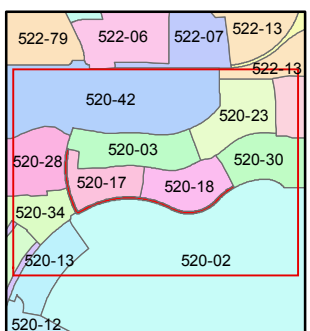
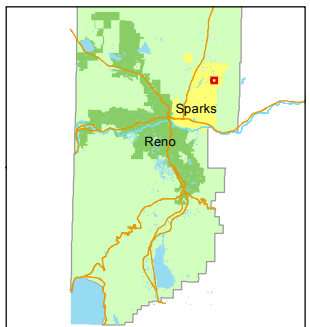
**520-16**

STATE OF NEVADA  
**WASHOE COUNTY**  
**ASSESSOR'S OFFICE**  
 Joshua G. Wilson, Assessor

1001 East Ninth Street  
 Building D  
 Reno, Nevada 89512  
 (775) 328-2231



1 inch = 200 feet



created by: EG 3/28/2014

last updated: \_\_\_\_\_

area previously shown on map(s)

520-02

NOTE: This map was prepared for the use of the Washoe County Assessor for assessment and illustrative purposes only. It does not represent a survey of the premises. No liability is assumed as to the sufficiency or accuracy of the data delineated hereon.