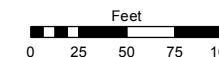


Assessor's Map Number

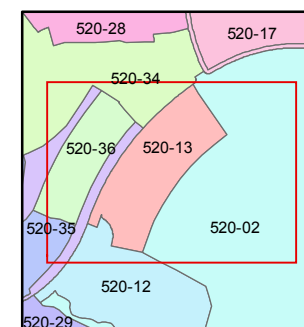
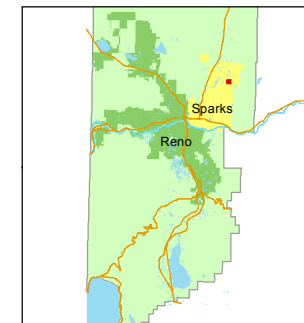
520-13

STATE OF NEVADA
WASHOE COUNTY
ASSESSOR'S OFFICE
Joshua G. Wilson, Assessor

1001 East Ninth Street
Building D
Reno, Nevada 89512
(775) 328-2231



1 inch = 100 feet



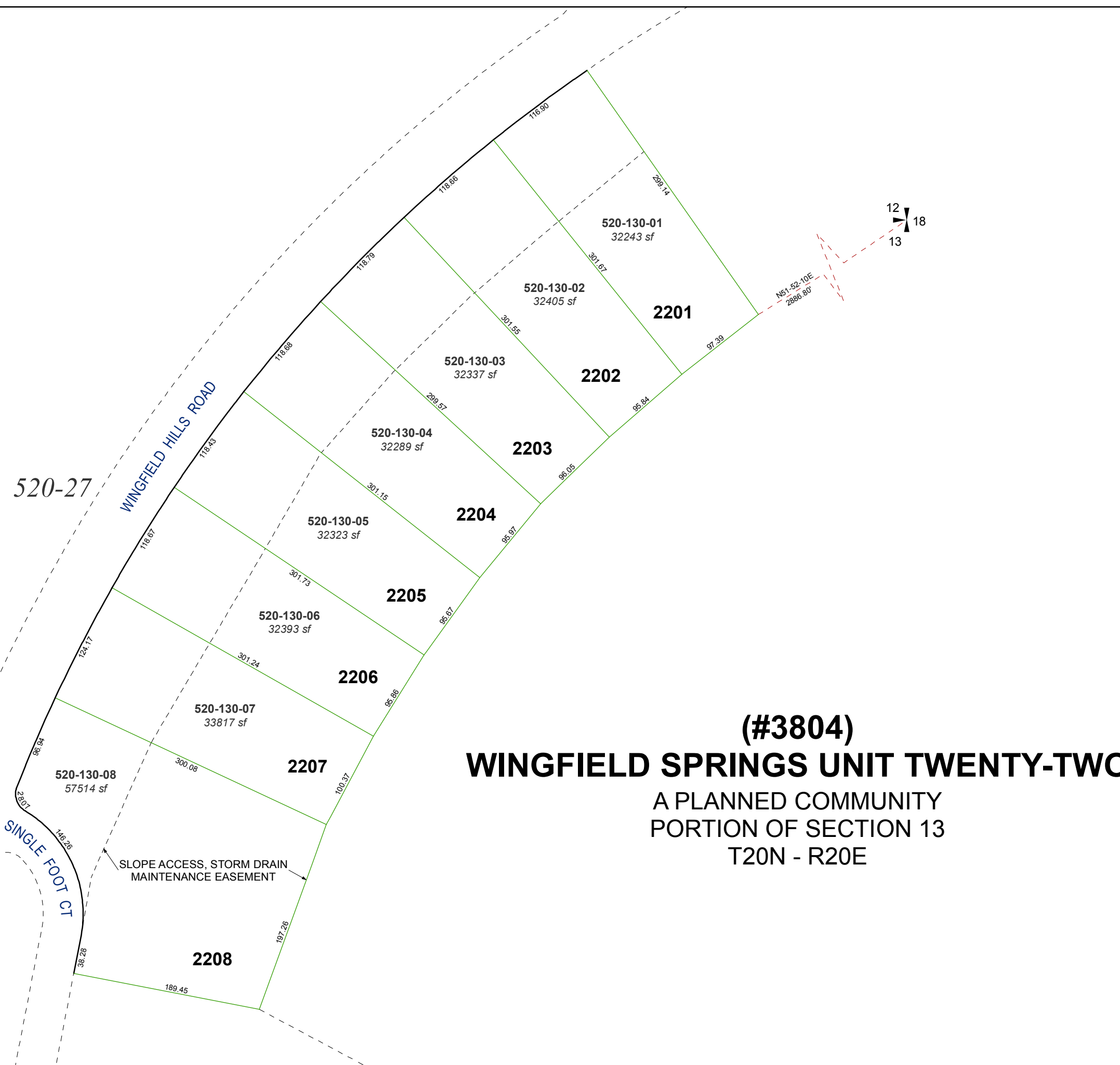
created by: EG 3/27/2014

last updated: _____

area previously shown on map(s)

520-02

NOTE: This map was prepared for the use of the Washoe County Assessor for assessment and illustrative purposes only. It does not represent a survey of the premises. No liability is assumed as to the sufficiency or accuracy of the data delineated hereon.



(#3804)
WINGFIELD SPRINGS UNIT TWENTY-TWO
A PLANNED COMMUNITY
PORTION OF SECTION 13
T20N - R20E