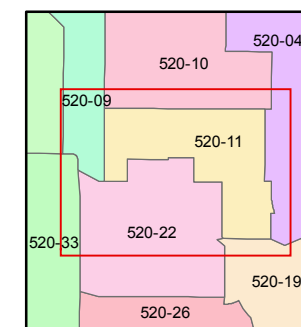
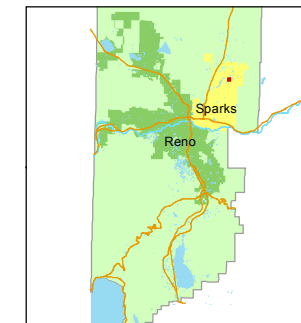


1 inch = 50 feet



created by: EG 6/20/2014

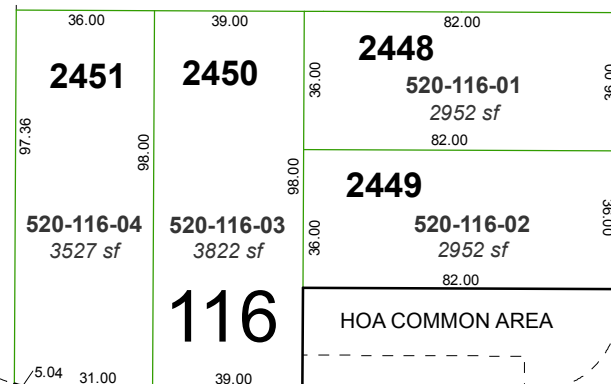
last updated: \_\_\_\_\_

area previously shown on map(s)

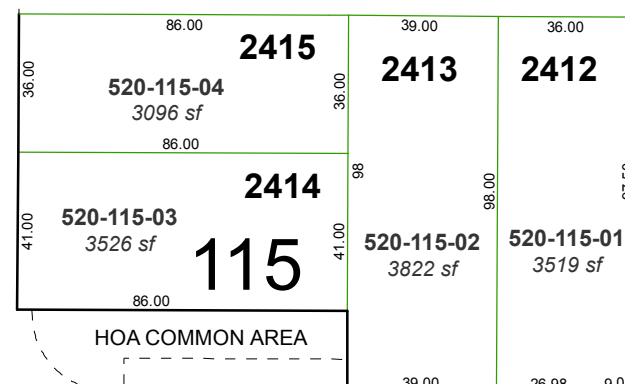
522-71

NOTE: This map was prepared for the use of the Washoe County Assessor for assessment and illustrative purposes only. It does not represent a survey of the premises. No liability is assumed as to the sufficiency or accuracy of the data delineated hereon.

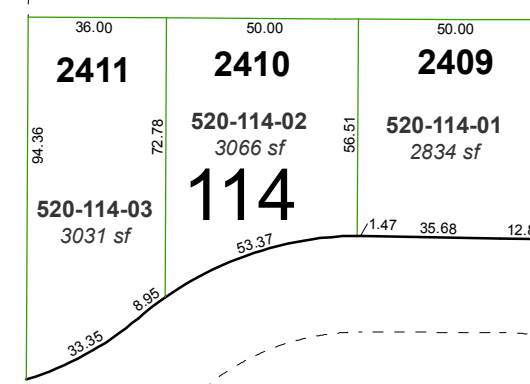
WINGFIELD HILLS ROAD



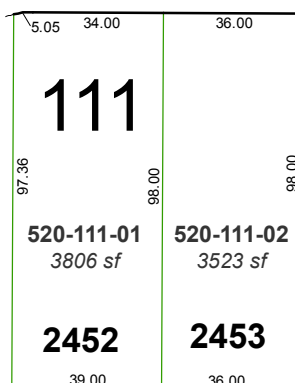
BLACK CINDER COURT



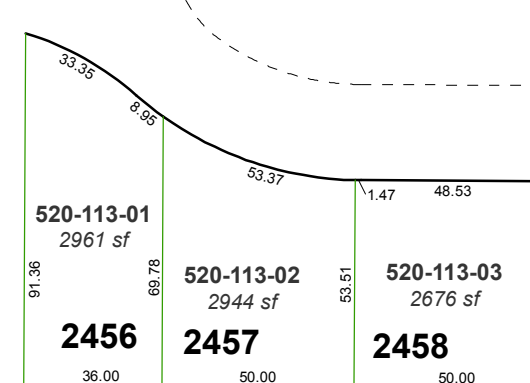
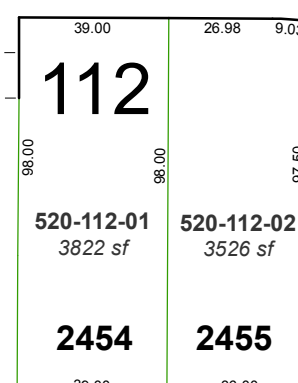
LAWRY DRIVE (PRIVATE / HOA COMMON AREA)



INGLESTON DRIVE



BLACK GYPSUM COURT



**(#3585)**  
**WINGFIELD SPRINGS**  
**UNIT 24-B**  
 A PLANNED COMMUNITY  
 PORTION OF THE NW ¼ SECTION 13  
 T20N - R20E