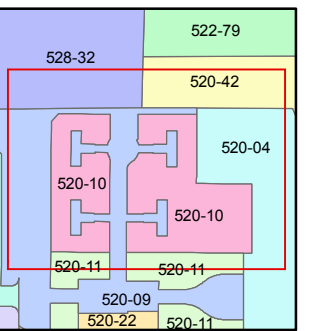
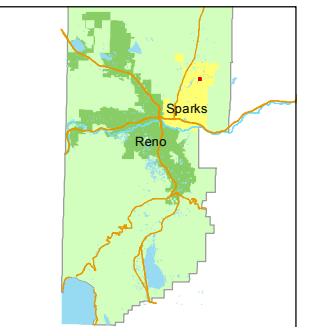


1 inch = 50 feet



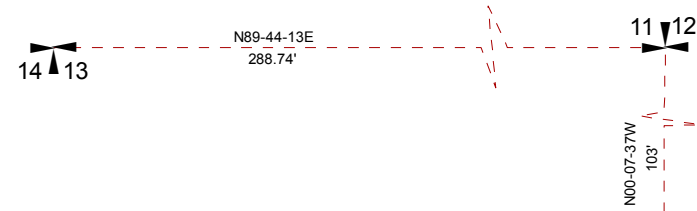
created by: KSB 9/14/09

last updated: KSB 8/23/12

area previously shown on map(s)

522-70

NOTE: This map was prepared for the use of the Washoe County Assessor for assessment and illustrative purposes only. It does not represent a survey of the premises. No liability is assumed as to the sufficiency or accuracy of the data delineated hereon.



VISTA BOULEVARD

(#3585)
WINGFIELD SPRINGS
UNIT 24-B
A PLANNED COMMUNITY
PORTION OF NW 1/4 SECTION 13
T20N - R20E

520-04

INGLESTON DRIVE

520-11

(PRIVATE / HOA COMMON AREA)

520-09

BLACK CINDER COURT

2' PERMANENT MAINTENANCE EASEMENT per Doc. #4128846

WINGFIELD HILLS ROAD

520-32

