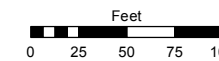
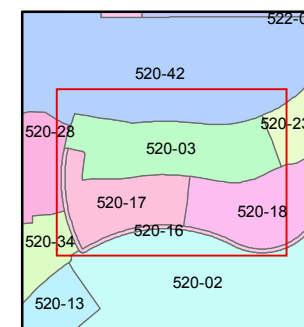
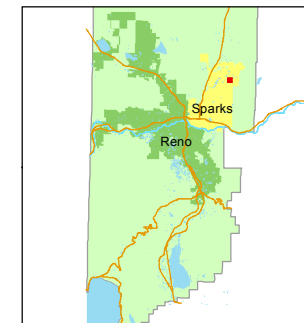


STATE OF NEVADA
WASHOE COUNTY
ASSESSOR'S OFFICE
Joshua G. Wilson, Assessor

1001 East Ninth Street
Building D
Reno, Nevada 89512
(775) 328-2231



1 inch = 100 feet



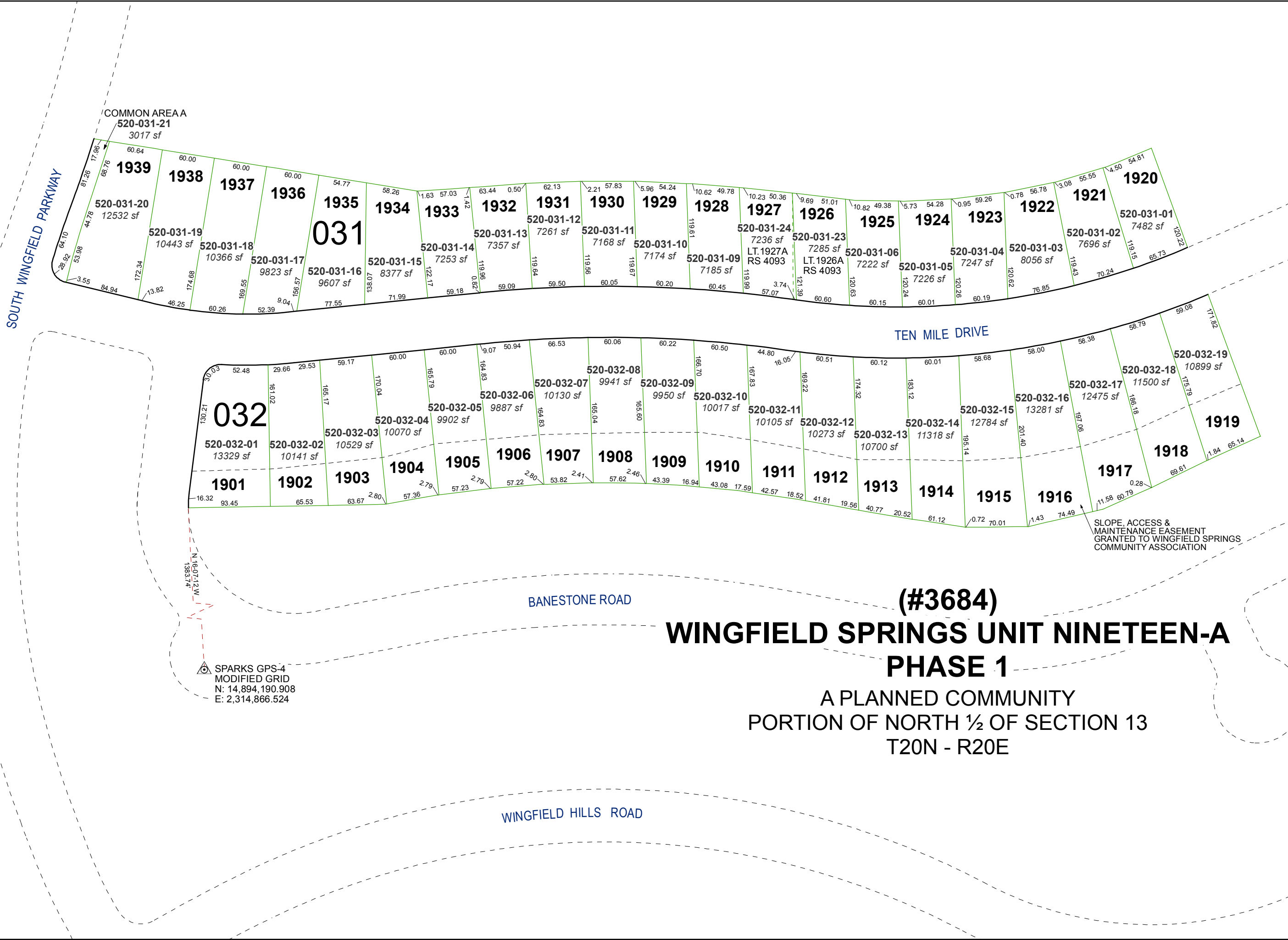
created by: EG 3/26/2014

last updated: _____

area previously shown on map(s)

522-80

NOTE: This map was prepared for the use of the Washoe County Assessor for assessment and illustrative purposes only. It does not represent a survey of the premises. No liability is assumed as to the sufficiency or accuracy of the data delineated hereon.



SPARKS GPS-4
MODIFIED GRID
N: 14,894,190.908
E: 2,314,866.524

(#3684)
WINGFIELD SPRINGS UNIT NINETEEN-A
PHASE 1
A PLANNED COMMUNITY
PORTION OF NORTH 1/2 OF SECTION 13
T20N - R20E