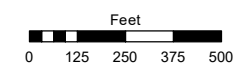
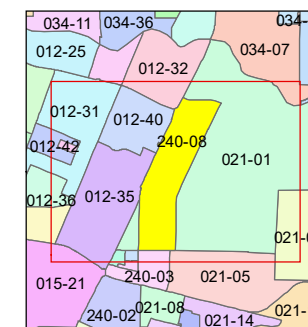
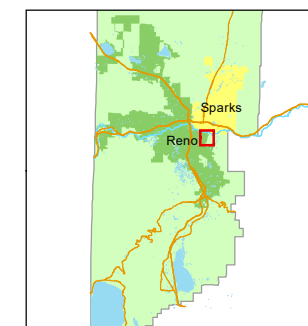


STATE OF NEVADA
WASHOE COUNTY
ASSESSOR'S OFFICE

1001 East Ninth Street, Building D
Reno, Nevada 89512
(775) 328-2231



1 inch = 500 feet



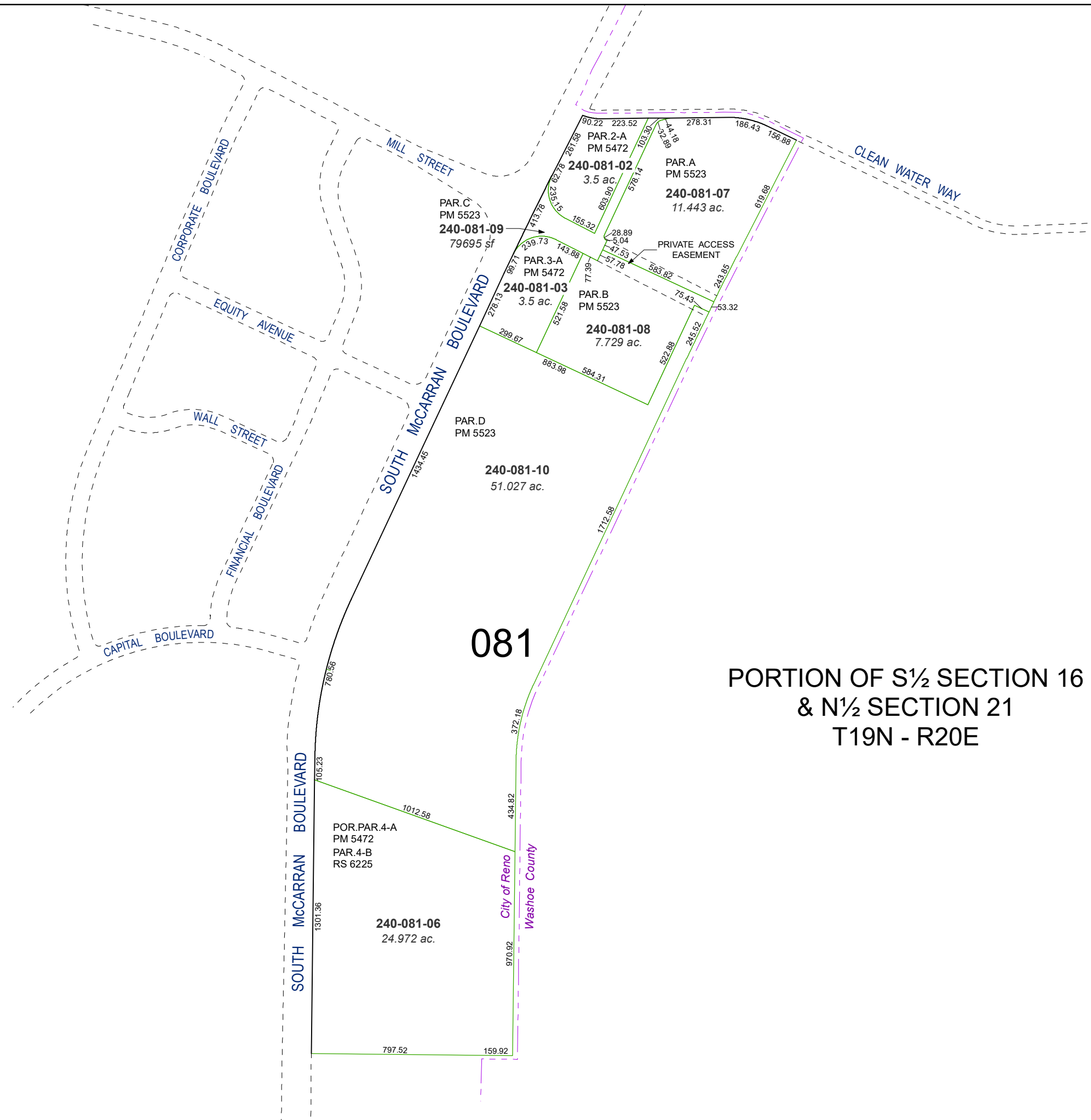
created by: SR 07/01/2020

updated: SR 01/21/21 SR 05/18/21

area previously shown on map(s):

021-01

NOTE: This map was prepared for the use of the Washoe County Assessor for assessment and illustrative purposes only. It does not represent a survey of the premises. No liability is assumed as to the sufficiency or accuracy of the data delineated hereon.



081

**PORTION OF S½ SECTION 16
& N½ SECTION 21
T19N - R20E**