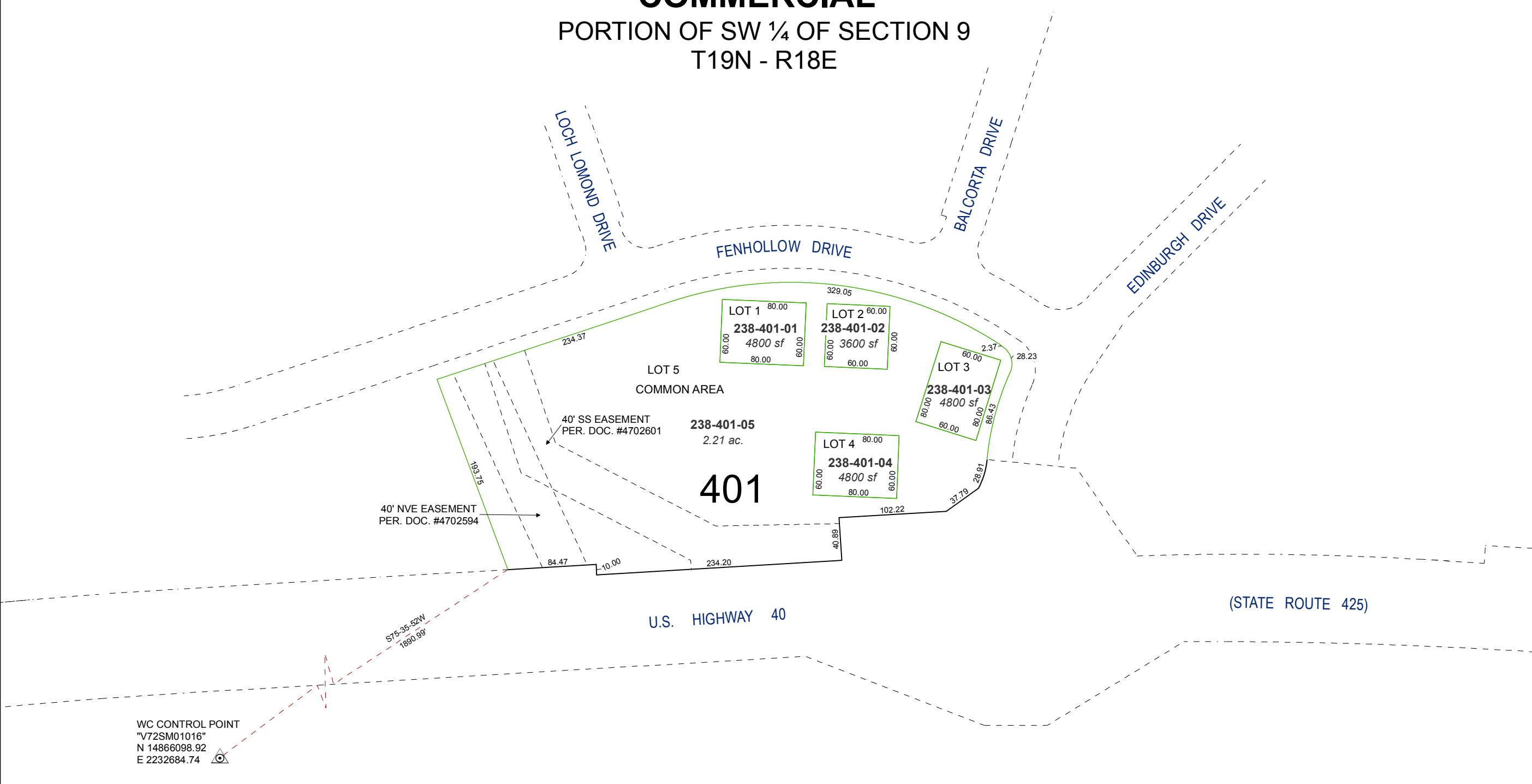


**(#5321)**  
**WEST MEADOWS NEIGHBORHOOD**  
**COMMERCIAL**

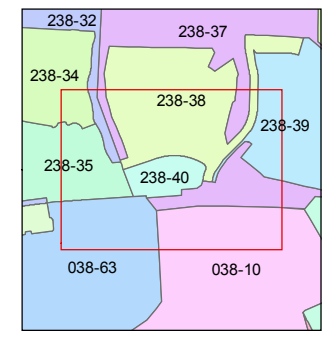
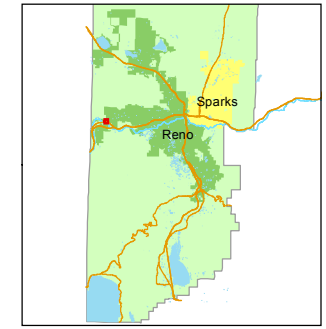
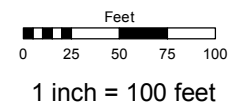
PORTION OF SW ¼ OF SECTION 9  
T19N - R18E



WC CONTROL POINT  
"V72SM01016"  
N 14866098.92  
E 2232684.74

Assessor's Map Number  
**238-40**

STATE OF NEVADA  
**WASHOE COUNTY**  
**ASSESSOR'S OFFICE**  
1001 East Ninth Street, Building D  
Reno, Nevada 89512  
(775) 328-2231



created by: JKF 05/14/2019  
updated: \_\_\_\_\_

area previously shown on map(s):  
238-37

NOTE: This map was prepared for the use of the Washoe County Assessor for assessment and illustrative purposes only. It does not represent a survey of the premises. No liability is assumed as to the sufficiency or accuracy of the data delineated hereon.