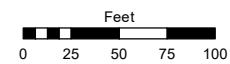
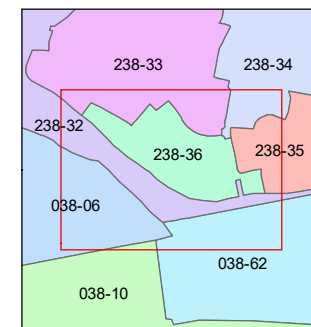
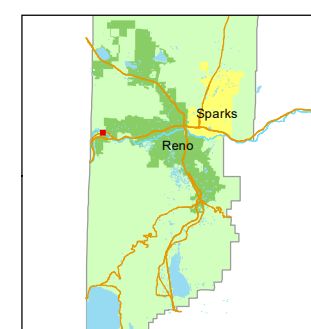


Assessor's Map Number  
**238-36**

STATE OF NEVADA  
**WASHOE COUNTY**  
ASSESSOR'S OFFICE  
1001 East Ninth Street, Building D  
Reno, Nevada 89512  
(775) 328-2231



1 inch = 100 feet



created by: JMO 9/15/2017  
updated: JRA 3/1/22

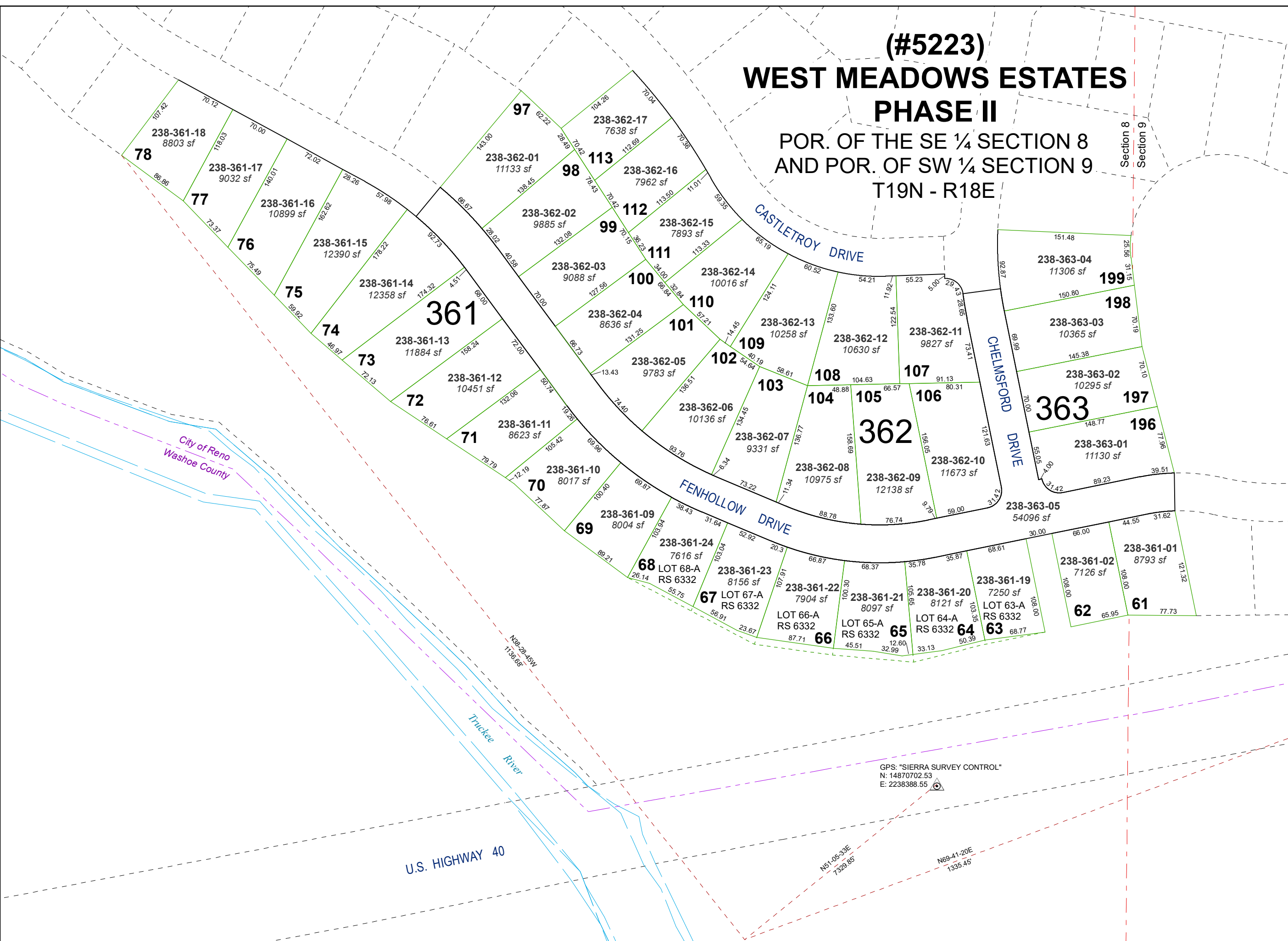
area previously shown on map(s):  
238-32

NOTE: This map was prepared for the use of the Washoe County Assessor for assessment and illustrative purposes only. It does not represent a survey of the premises. No liability is assumed as to the sufficiency or accuracy of the data delineated hereon.

# (#5223) WEST MEADOWS ESTATES PHASE II

## POR. OF THE SE 1/4 SECTION 8 AND POR. OF SW 1/4 SECTION 9 T19N - R18E

Section 8  
Section 9



GPS: "SIERRA SURVEY CONTROL"  
N: 14870702.53  
E: 2238388.55

U.S. HIGHWAY 40

Truckee River

City of Reno  
Washoe County

N51-05-30E  
7329.85'

N69-41-20E  
1335.45'

N38-28-45W  
1736.68'