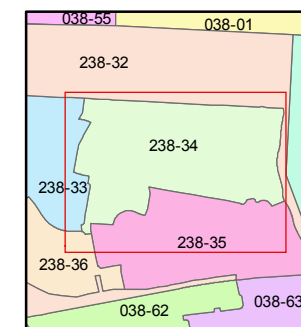
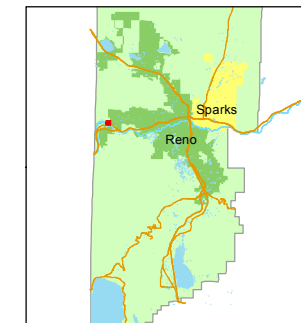


STATE OF NEVADA
WASHOE COUNTY
ASSESSOR'S OFFICE
Michael E. Clark, Assessor

1001 East Ninth Street
Building D
Reno, Nevada 89512
(775) 328-2231



1 inch = 100 feet



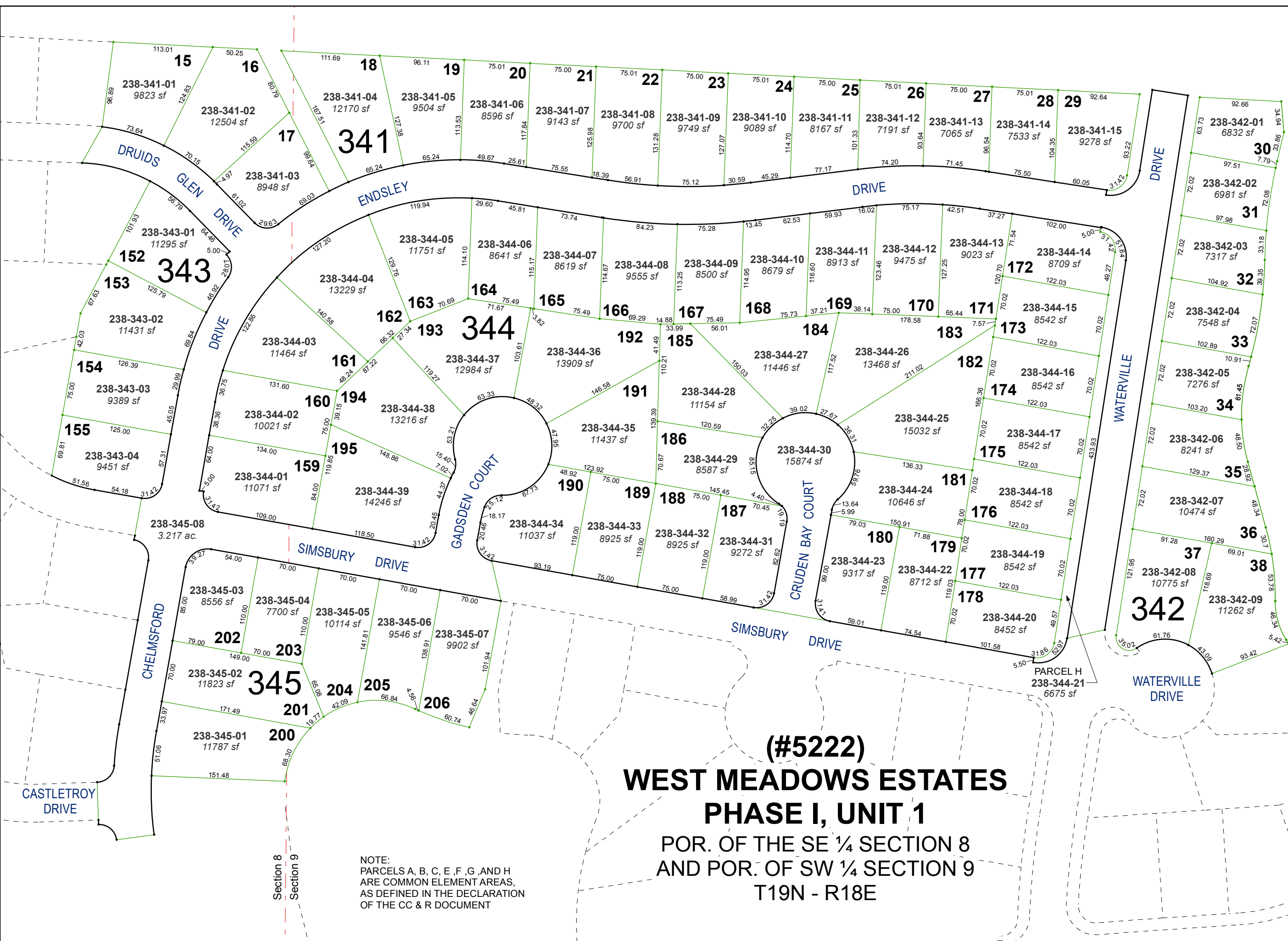
created by: JMO 8/29/2017

last updated: _____

area previously shown on map(s)

038-83

NOTE: This map was prepared for the use of the Washoe County Assessor for assessment and illustrative purposes only. It does not represent a survey of the premises. No liability is assumed as to the sufficiency or accuracy of the data delineated hereon.



(#5222)
WEST MEADOWS ESTATES
PHASE I, UNIT 1
POR. OF THE SE ¼ SECTION 8
AND POR. OF SW ¼ SECTION 9
T19N - R18E

NOTE:
PARCELS A, B, C, E, F, G, AND H
ARE COMMON ELEMENT AREAS,
AS DEFINED IN THE DECLARATION
OF THE CC & R DOCUMENT