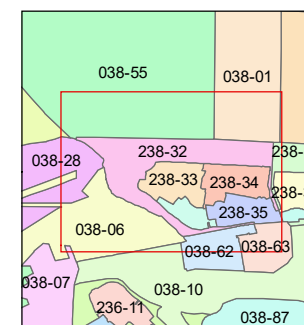
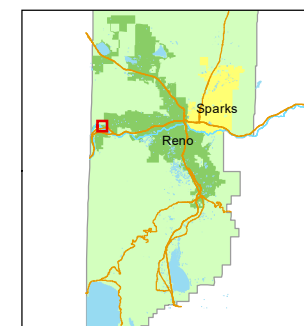




1 inch = 300 feet



created by: JMO 8/29/2017

updated: JMO 9/15/17 JRA 3/1/22

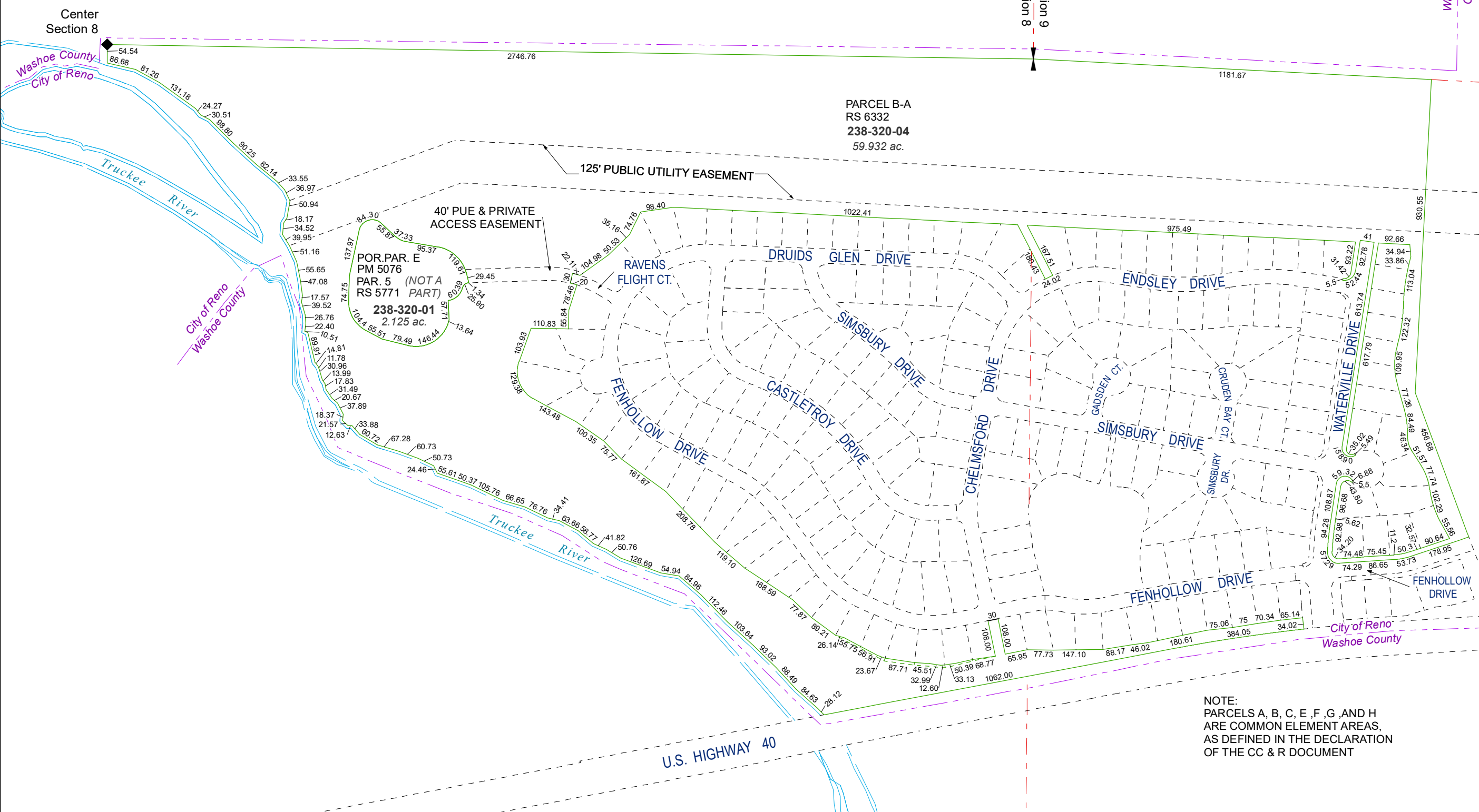
area previously shown on map(s):

038-83

NOTE: This map was prepared for the use of the Washoe County Assessor for assessment and illustrative purposes only. It does not represent a survey of the premises. No liability is assumed as to the sufficiency or accuracy of the data delineated hereon.

# (#5222) WEST MEADOWS ESTATES PHASE I, UNIT 1

POR. OF THE SE ¼ SECTION 8  
AND POR. OF SW ¼ SECTION 9  
T19N - R18E



NOTE:  
PARCELS A, B, C, E, F, G, AND H  
ARE COMMON ELEMENT AREAS,  
AS DEFINED IN THE DECLARATION  
OF THE CC & R DOCUMENT

U.S. HIGHWAY 40