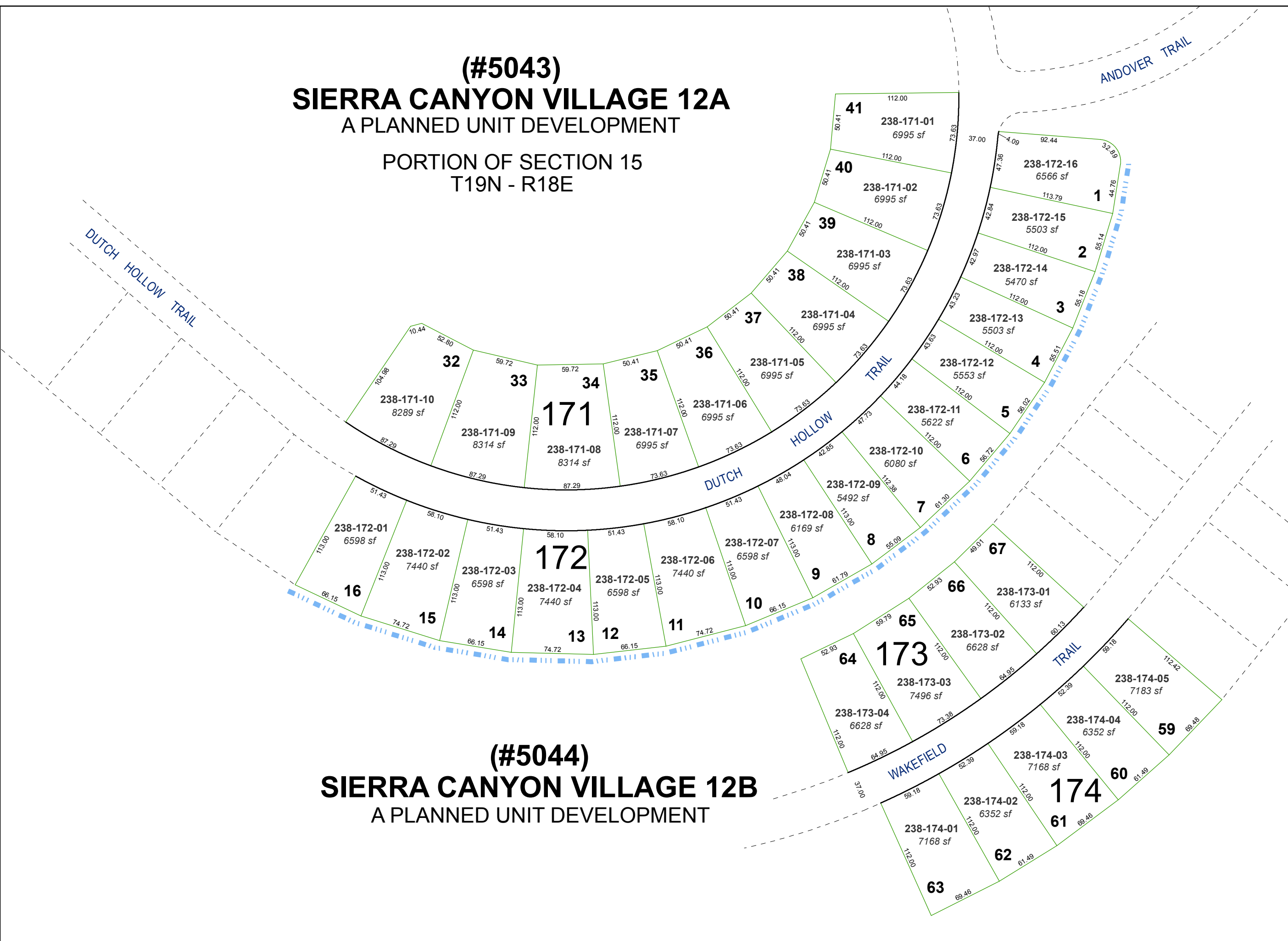


(#5043)
SIERRA CANYON VILLAGE 12A
 A PLANNED UNIT DEVELOPMENT

PORTION OF SECTION 15
 T19N - R18E

(#5044)
SIERRA CANYON VILLAGE 12B
 A PLANNED UNIT DEVELOPMENT

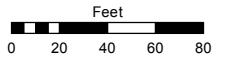


Assessor's Map Number

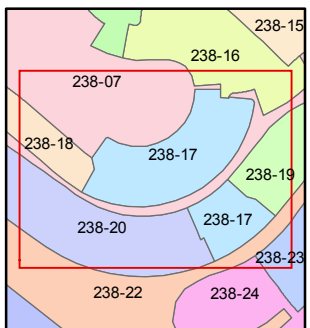
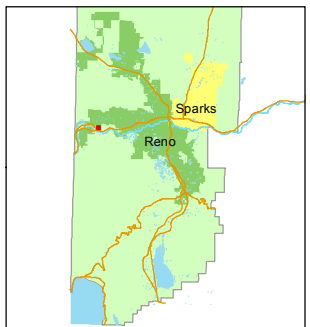
238-17

STATE OF NEVADA
WASHOE COUNTY
 ASSESSOR'S OFFICE
 Joshua G. Wilson, Assessor

1001 East Ninth Street
 Building D
 Reno, Nevada 89512
 (775) 328-2231



1 inch = 80 feet



created by: KSB 9/18/2013

last updated: KSB 9/23/13 KSB 11/14/14

area previously shown on map(s)

238-07

NOTE: This map was prepared for the use of the Washoe County Assessor for assessment and illustrative purposes only. It does not represent a survey of the premises. No liability is assumed as to the sufficiency or accuracy of the data delineated hereon.