

**RETIRED**

*This map has no valid parcels*

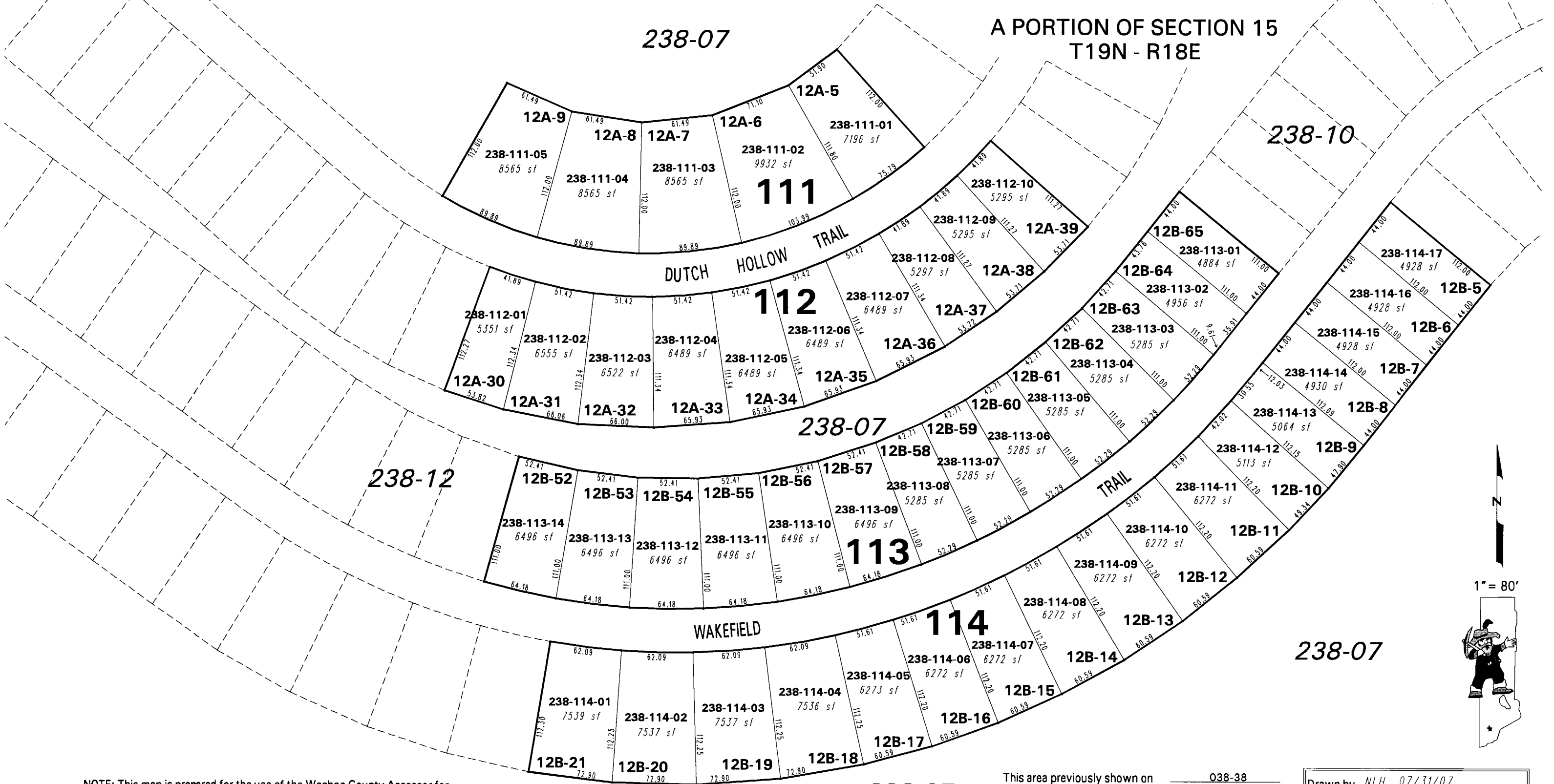
**(#4806)**

**IA CANYON VILLAGE 11 & 12**

A PLANNED UNIT DEVELOPMENT

A PORTION OF SECTION 15

T19N - R18E



NOTE: This map is prepared for the use of the Washoe County Assessor for assessment and illustrative purposes only. It does not represent a survey of the premises. No liability is assumed as to the sufficiency or the accuracy of the data delineated hereon.

Office of Washoe County Assessor, Nevada - Joshua G. Wilson

This area previously shown on 038-38

NOTE: Areas of parcels which are less than 2 acres are shown in square feet.

Drawn by NLH 07/31/07  
 Revised \_\_\_\_\_  
 \_\_\_\_\_  
 \_\_\_\_\_