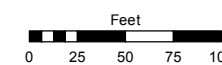
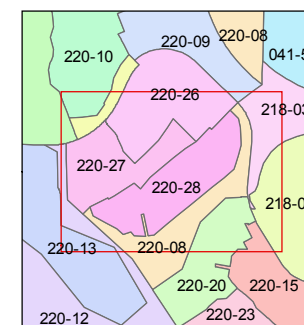
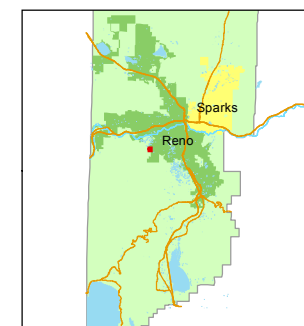


STATE OF NEVADA  
**WASHOE COUNTY**  
ASSESSOR'S OFFICE

1001 East Ninth Street, Building D  
Reno, Nevada 89512  
(775) 328-2231



1 inch = 100 feet



created by: JMO 08/09/2017

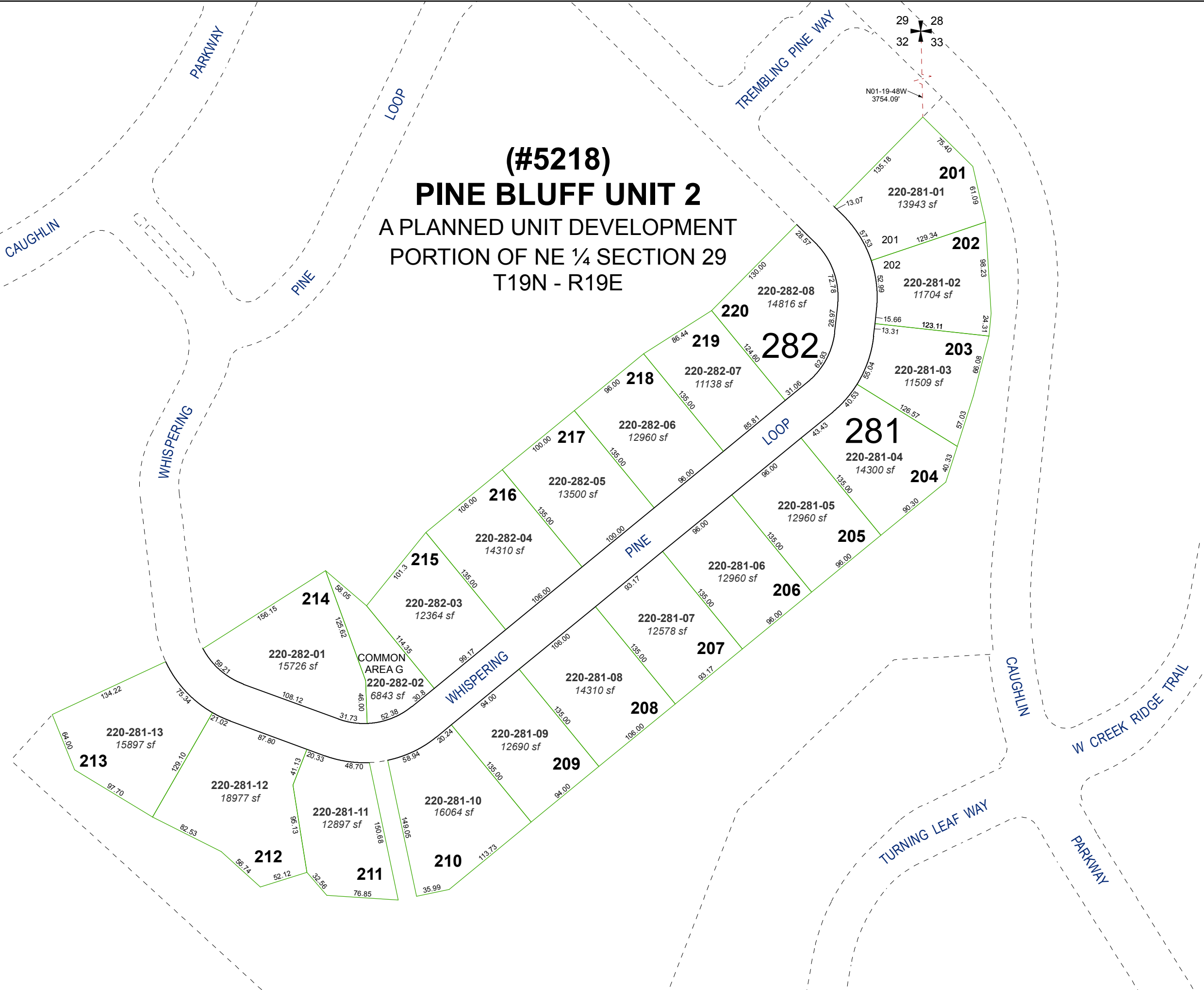
updated: SR 03/11/19

area previously shown on map(s):

220-08

NOTE: This map was prepared for the use of the Washoe County Assessor for assessment and illustrative purposes only. It does not represent a survey of the premises. No liability is assumed as to the sufficiency or accuracy of the data delineated hereon.

**(#5218)**  
**PINE BLUFF UNIT 2**  
A PLANNED UNIT DEVELOPMENT  
PORTION OF NE ¼ SECTION 29  
T19N - R19E



29 28  
32 33

N01-19-48W  
3754.09'

**201**  
220-281-01  
13943 sf

**202**  
220-281-02  
11704 sf

**203**  
220-281-03  
11509 sf

**281**  
220-281-04  
14300 sf

**205**  
220-281-05  
12960 sf

**206**  
220-281-06  
12960 sf

**207**  
220-281-07  
12578 sf

**208**  
220-281-08  
14310 sf

**209**  
220-281-09  
12690 sf

**210**  
220-281-10  
16064 sf

**211**  
220-281-11  
12897 sf

**212**  
220-281-12  
18977 sf

**213**  
220-281-13  
15897 sf

**214**  
220-282-01  
15726 sf

**215**  
220-282-02  
6843 sf

**216**  
220-282-03  
12364 sf

**217**  
220-282-04  
14310 sf

**218**  
220-282-05  
13500 sf

**219**  
220-282-06  
12960 sf

**282**  
220-282-07  
11138 sf

**220**  
220-282-08  
14816 sf

COMMON  
AREA G  
220-282-02  
6843 sf