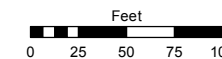


# (#5171) PINE BLUFF UNIT 1

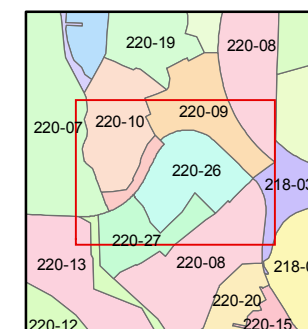
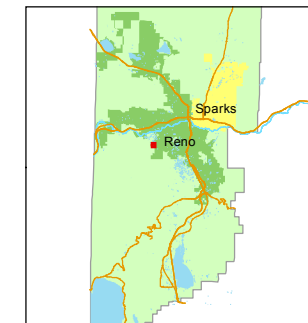
## A PLANNED UNIT DEVELOPMENT PORTION OF NE ¼ SECTION 29 T19N - R19E

STATE OF NEVADA  
**WASHOE COUNTY**  
ASSESSOR'S OFFICE  
Michael E. Clark, Assessor

1001 East Ninth Street  
Building D  
Reno, Nevada 89512  
(775) 328-2231



1 inch = 100 feet



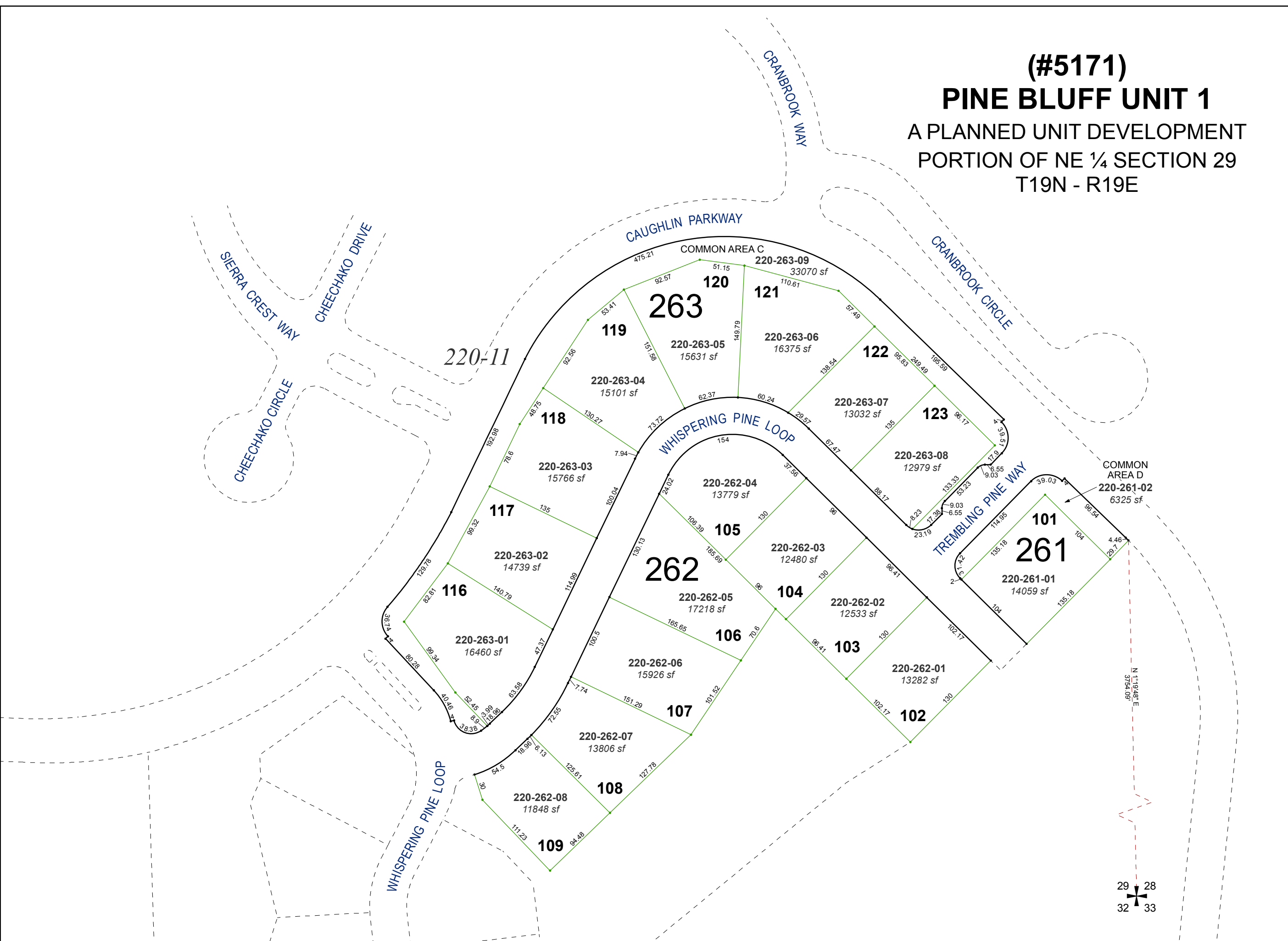
created by: EMG 8/11/2016

last updated: \_\_\_\_\_

area previously shown on map(s)

220-08

NOTE: This map was prepared for the use of the Washoe County Assessor for assessment and illustrative purposes only. It does not represent a survey of the premises. No liability is assumed as to the sufficiency or accuracy of the data delineated hereon.



29 28  
32 33