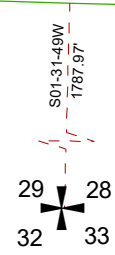
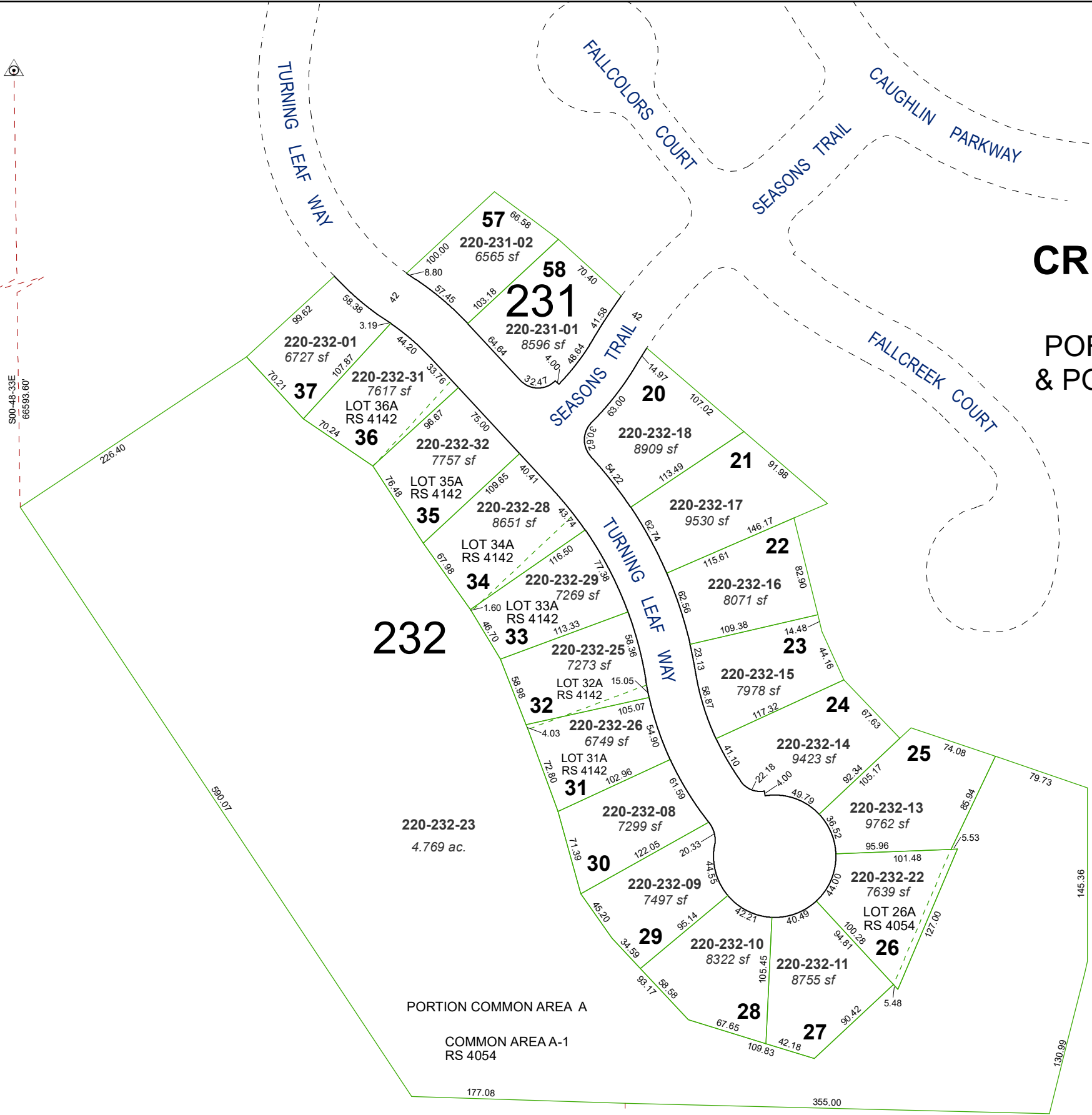


GPS STATION
"FAA REAA 1994"
N 14,918,263.341
E 2,262,347.761

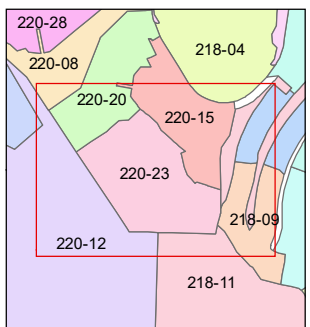
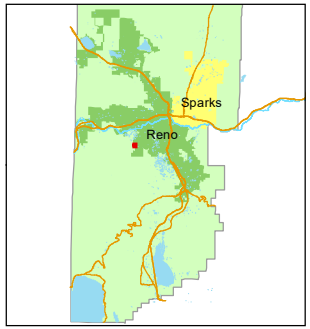
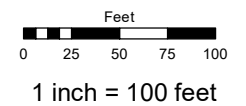


(#3984) CREEKRIDGE SOUTH UNIT #3

PORTION W 1/2 SECTION 28
& PORTION E 1/2 SECTION 29
T19N - R19E

Assessor's Map Number
220-23

STATE OF NEVADA
WASHOE COUNTY
ASSESSOR'S OFFICE
1001 East Ninth Street, Building D
Reno, Nevada 89512
(775) 328-2231



created by: JRA 12/11/2020
updated: _____

area previously shown on map(s):
220-14

NOTE: This map was prepared for the use of the Washoe County Assessor for assessment and illustrative purposes only. It does not represent a survey of the premises. No liability is assumed as to the sufficiency or accuracy of the data delineated hereon.