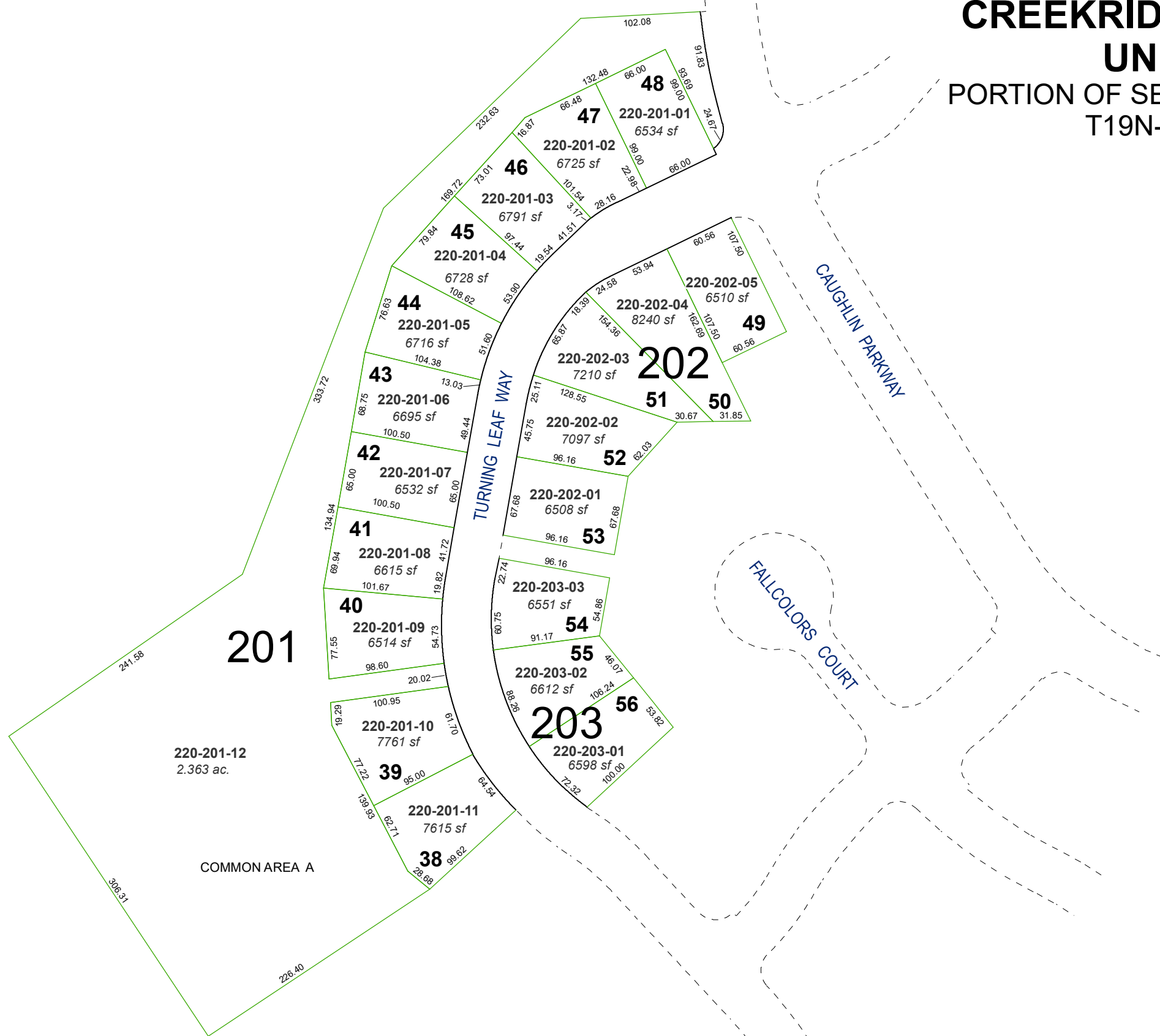
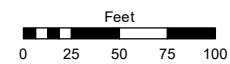


(# 3730)
CREEKRIDGE SOUTH
UNIT 2
 PORTION OF SECTIONS 28 & 29
 T19N- R19E

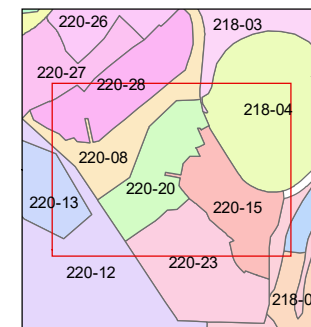
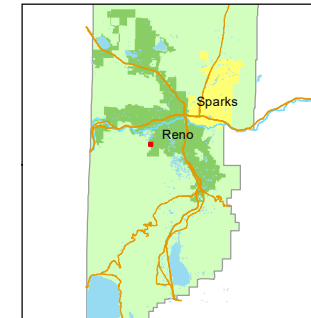


Assessor's Map Number
220-20

STATE OF NEVADA
WASHOE COUNTY
ASSESSOR'S OFFICE
 1001 East Ninth Street, Building D
 Reno, Nevada 89512
 (775) 328-2231



1 inch = 100 feet



created by: JRA 12/03/2020
 updated: _____

area previously shown on map(s):
220-14

NOTE: This map was prepared for the use of the Washoe County Assessor for assessment and illustrative purposes only. It does not represent a survey of the premises. No liability is assumed as to the sufficiency or accuracy of the data delineated hereon.