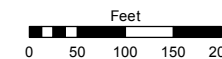
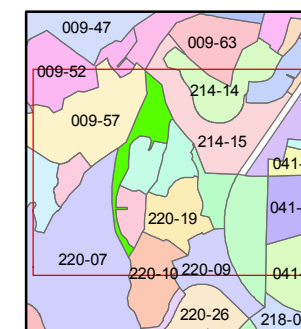
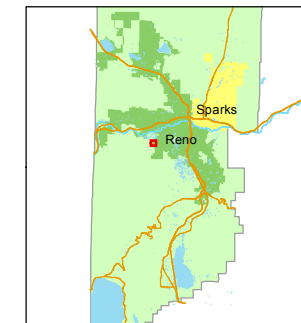


STATE OF NEVADA
WASHOE COUNTY
ASSESSOR'S OFFICE
Michael E. Clark, Assessor

1001 East Ninth Street
Building D
Reno, Nevada 89512
(775) 328-2231



1 inch = 200 feet



created by: JMO 04/14/2017

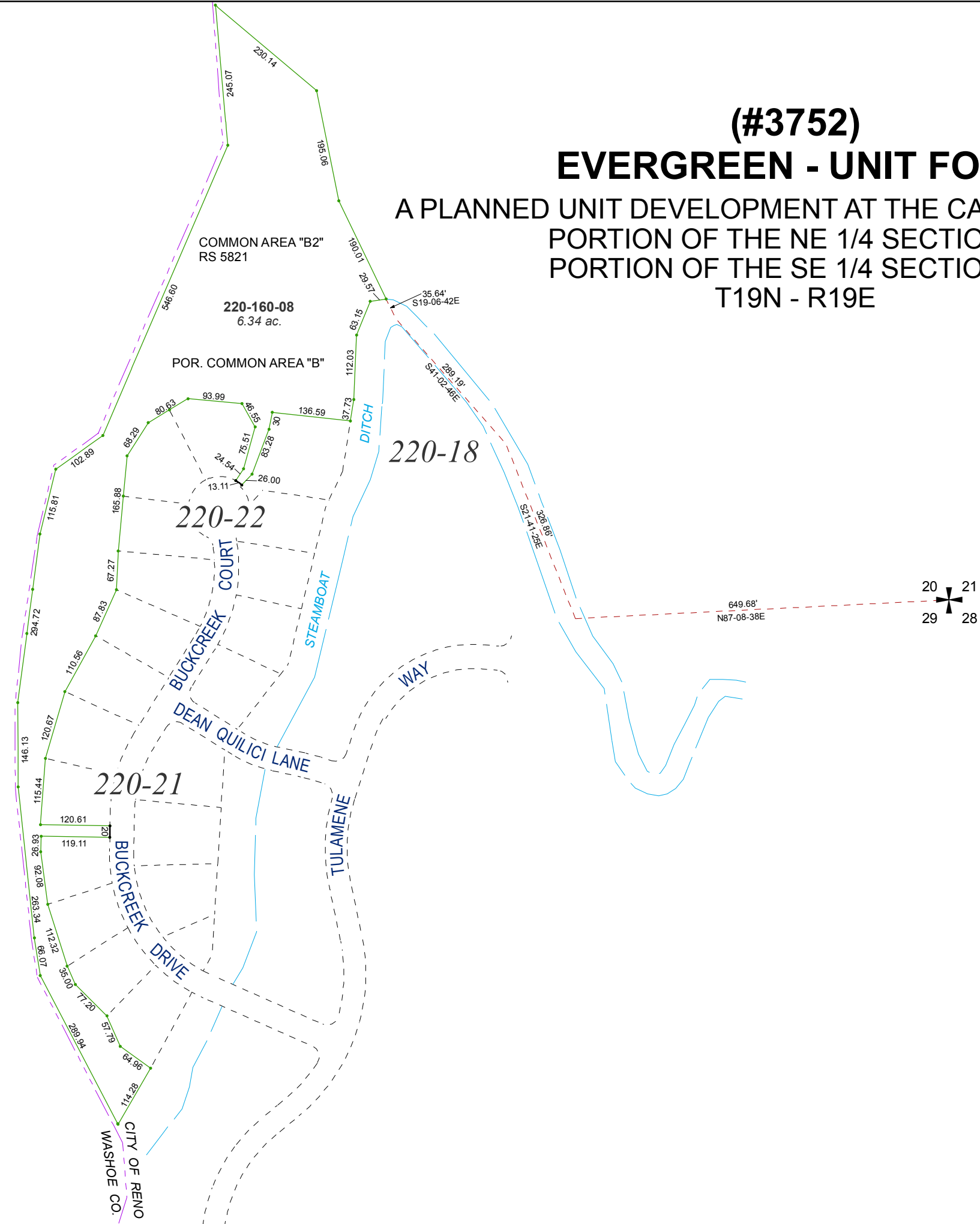
last updated: _____

area previously shown on map(s)

NOTE: This map was prepared for the use of the Washoe County Assessor for assessment and illustrative purposes only. It does not represent a survey of the premises. No liability is assumed as to the sufficiency or accuracy of the data delineated hereon.

(#3752) EVERGREEN - UNIT FOUR

A PLANNED UNIT DEVELOPMENT AT THE CAUGHLIN RANCH PORTION OF THE NE 1/4 SECTION 29 PORTION OF THE SE 1/4 SECTION 20 T19N - R19E



COMMON AREA "B2"
RS 5821

220-160-08
6.34 ac.

POR. COMMON AREA "B"

220-18

220-22

220-21

20 21
29 28

CITY OF RENO
WASHOE CO.