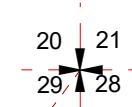
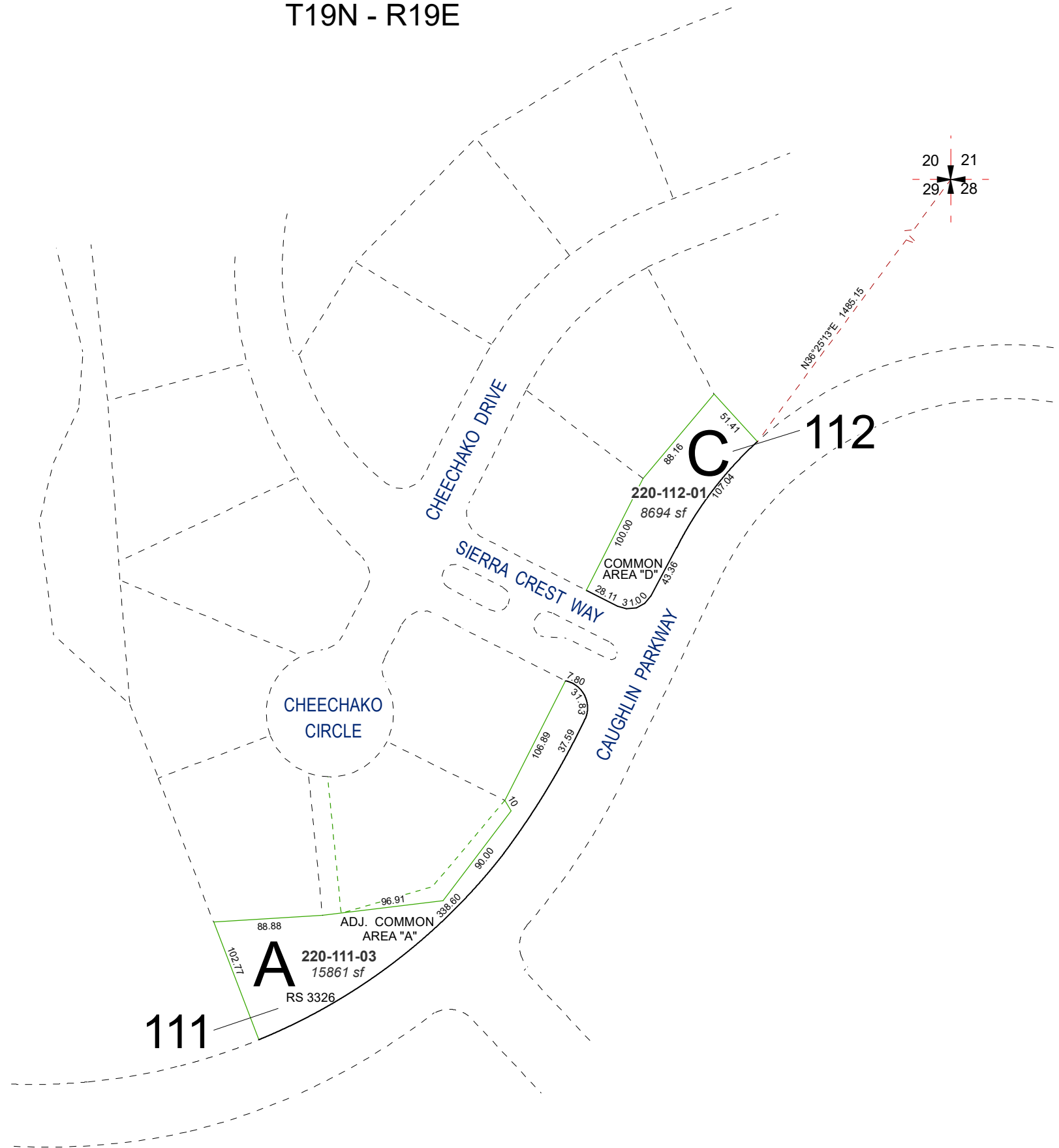


(#3192)
EVERGREEN UNIT TWO
 PORTION NE¼ SECTION 29
 T19N - R19E

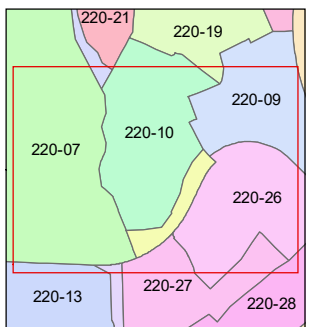
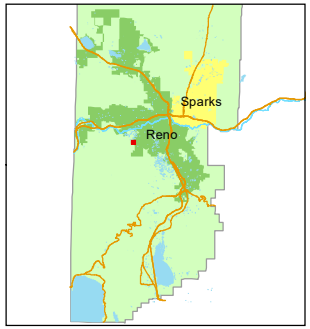


Assessor's Map Number
220-11

STATE OF NEVADA
WASHOE COUNTY
ASSESSOR'S OFFICE
 1001 East Ninth Street, Building D
 Reno, Nevada 89512
 (775) 328-2231



Feet
 0 25 50 75 100
 1 inch = 100 feet



created by: JRA 12/10/2020
 updated: _____
 area previously shown on map(s):
220-08

NOTE: This map was prepared for the use of the Washoe County Assessor for assessment and illustrative purposes only. It does not represent a survey of the premises. No liability is assumed as to the sufficiency or accuracy of the data delineated hereon.