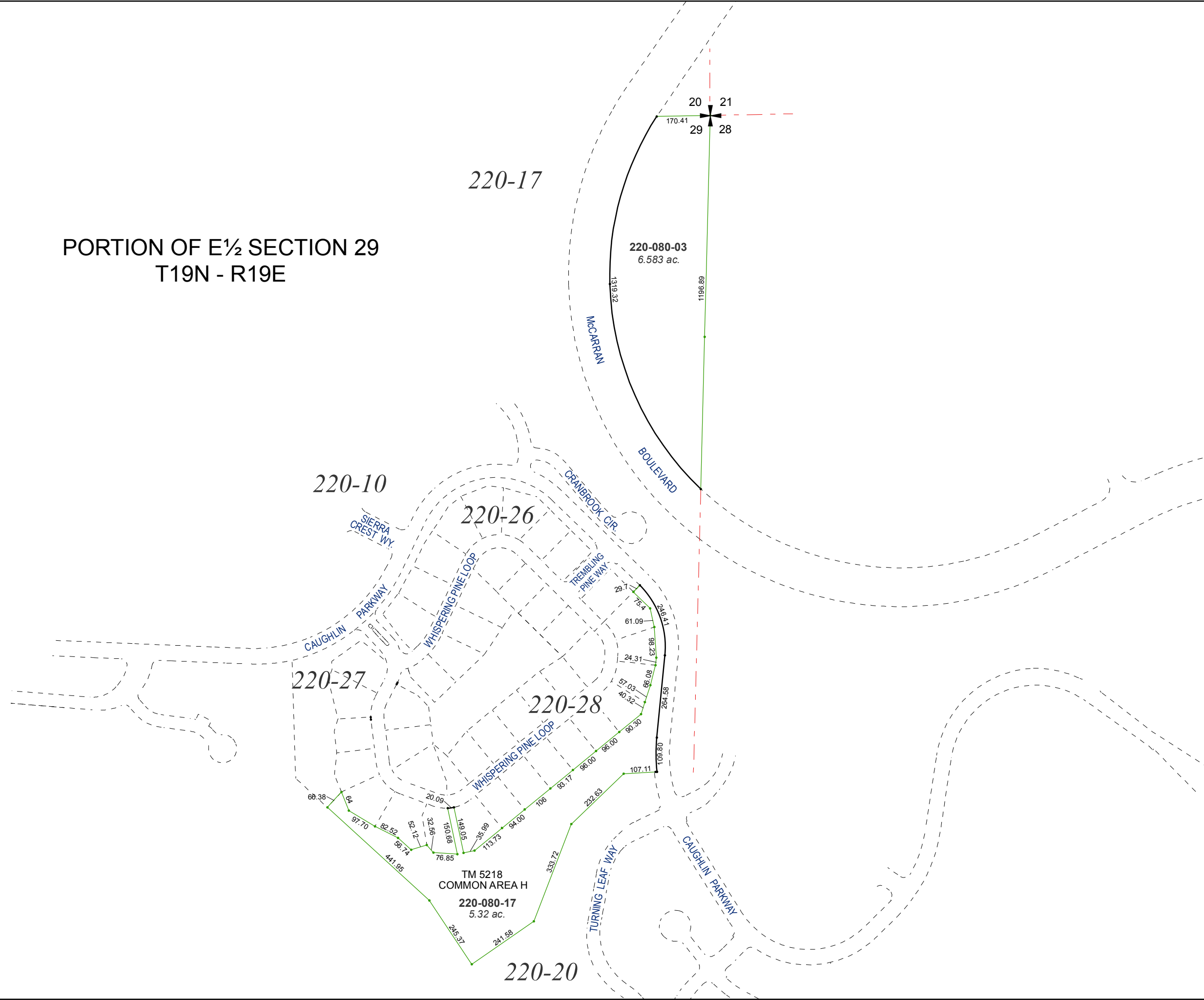


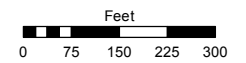
PORTION OF E½ SECTION 29  
T19N - R19E



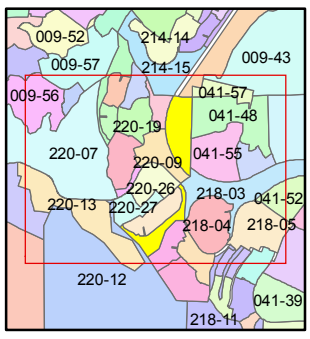
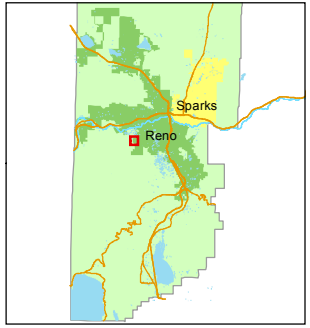
Assessor's Map Number  
**220-08**

STATE OF NEVADA  
**WASHOE COUNTY**  
ASSESSOR'S OFFICE  
Michael E. Clark, Assessor

1001 East Ninth Street  
Building D  
Reno, Nevada 89512  
(775) 328-2231



1 inch = 300 feet



created by: KSB 04/20/2010

last updated: JMO 8/9/17 SR 10/5/17

area previously shown on map(s)  
041-02

NOTE: This map was prepared for the use of the Washoe County Assessor for assessment and illustrative purposes only. It does not represent a survey of the premises. No liability is assumed as to the sufficiency or accuracy of the data delineated hereon.