

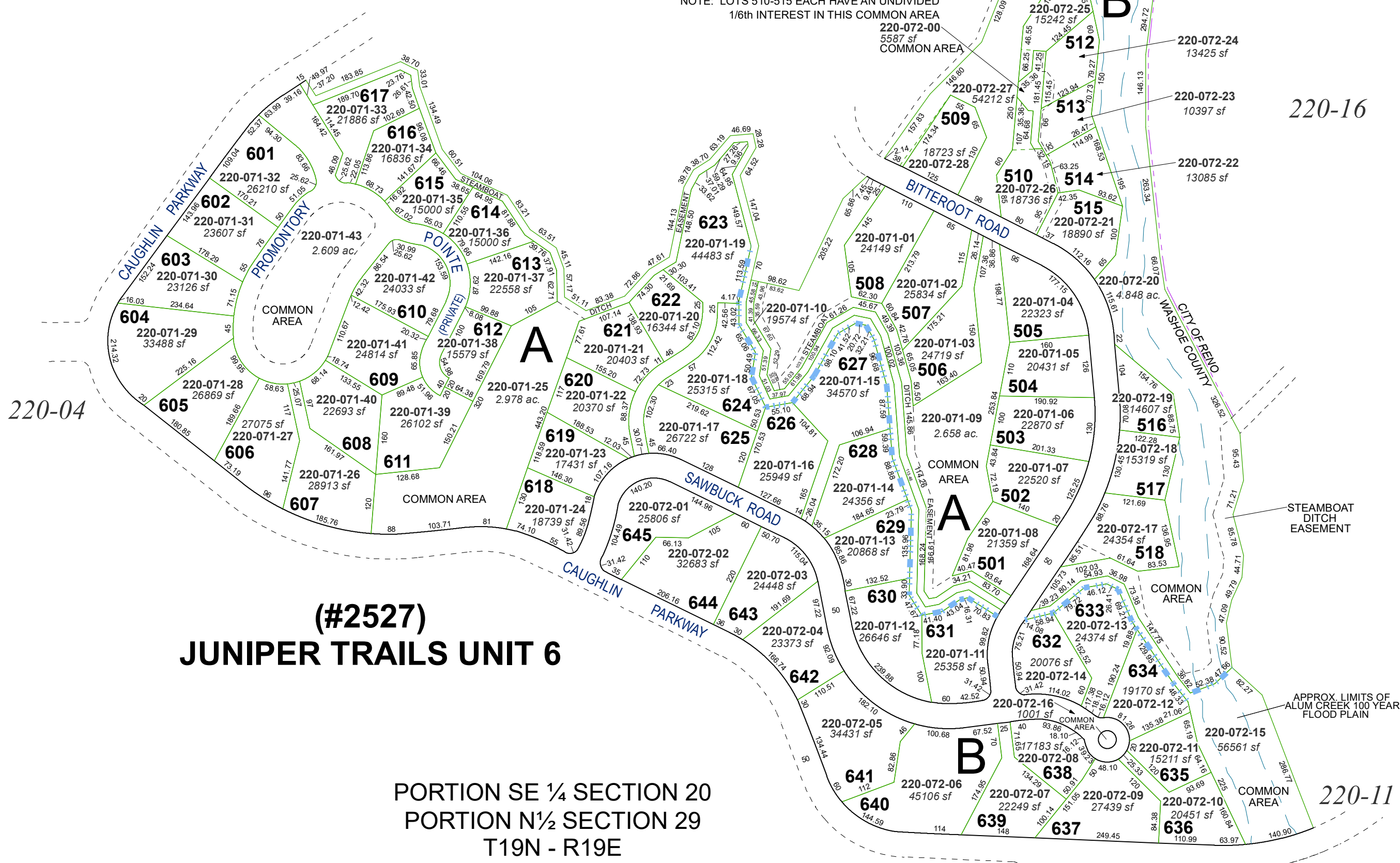
(#2422) JUNIPER TRAILS UNIT 5

20
29

APPROX. LIMITS OF
ALUM CREEK 100 YEAR
FLOOD PLAIN

20
29

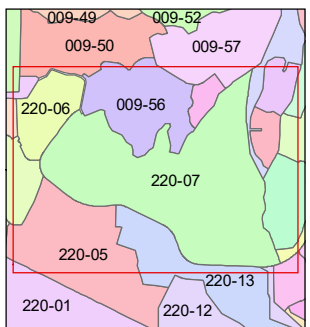
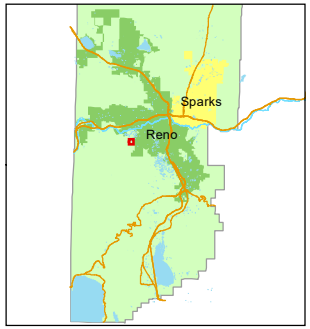
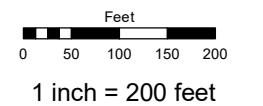
NOTE: LOTS 510-515 EACH HAVE AN UNDIVIDED
1/6th INTEREST IN THIS COMMON AREA



(#2527) JUNIPER TRAILS UNIT 6

PORTION SE 1/4 SECTION 20
PORTION N 1/2 SECTION 29
T19N - R19E

Assessor's Map Number
220-07
STATE OF NEVADA
WASHOE COUNTY
ASSESSOR'S OFFICE
1001 East Ninth Street, Building D
Reno, Nevada 89512
(775) 328-2231



created by: JRA 11/30/2020
updated: _____
area previously shown on map(s):
041-33, 34

NOTE: This map was prepared for the use of the Washoe County Assessor for assessment and illustrative purposes only. It does not represent a survey of the premises. No liability is assumed as to the sufficiency or accuracy of the data delineated hereon.