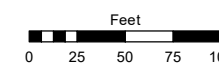
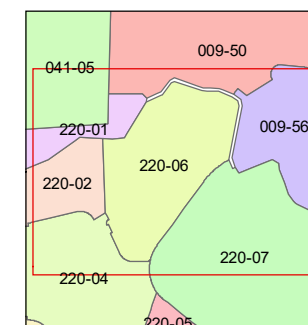
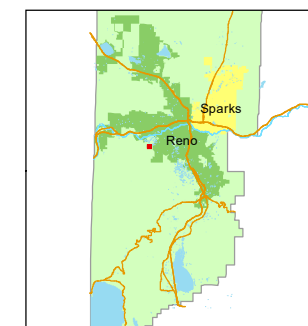


STATE OF NEVADA
WASHOE COUNTY
ASSESSOR'S OFFICE

1001 East Ninth Street, Building D
Reno, Nevada 89512
(775) 328-2231



1 inch = 100 feet

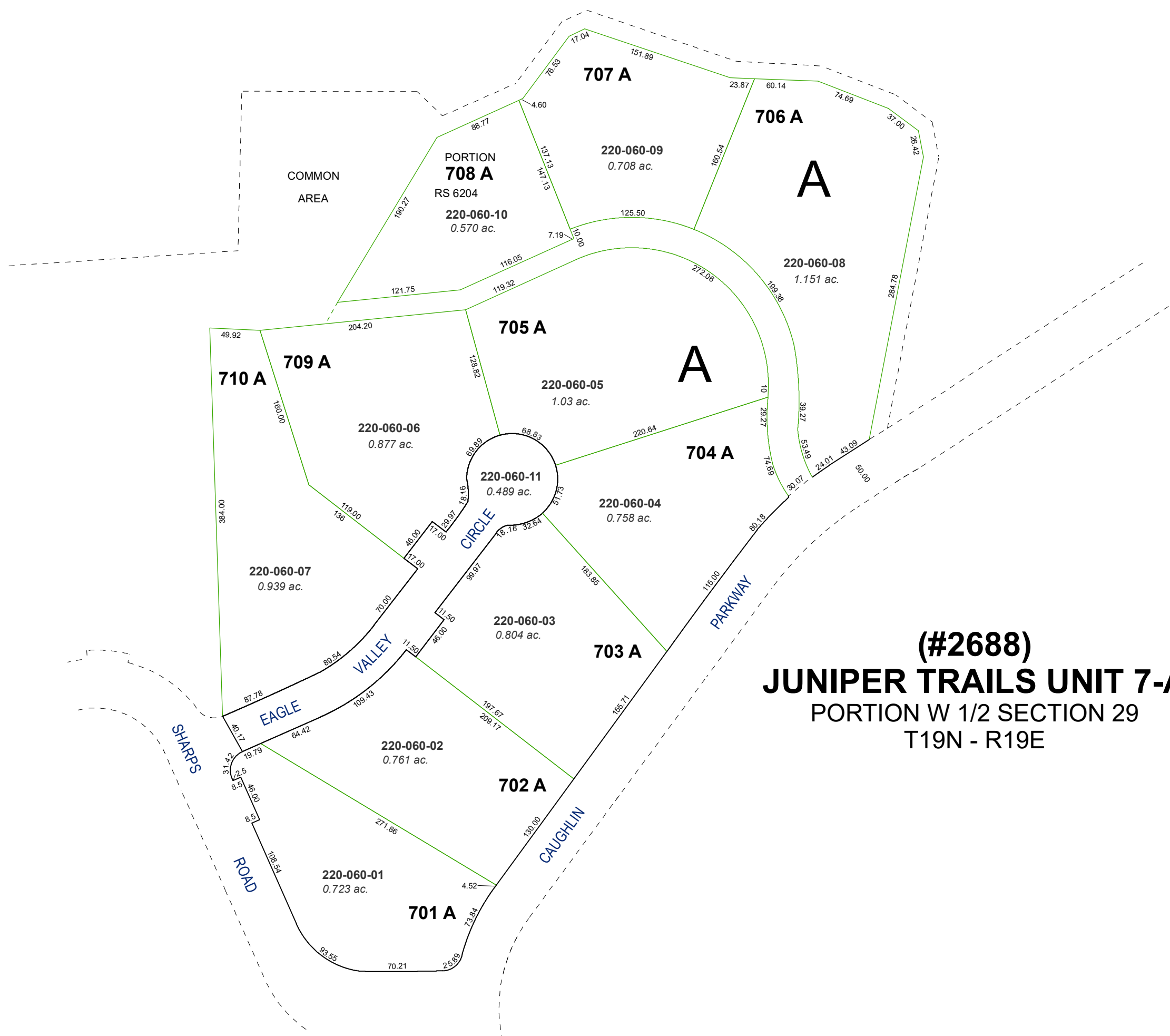


created by: JRA 12/01/2020

updated: JRA 9/21/21

area previously shown on map(s):
041-44

NOTE: This map was prepared for the use of the Washoe County Assessor for assessment and illustrative purposes only. It does not represent a survey of the premises. No liability is assumed as to the sufficiency or accuracy of the data delineated hereon.



(#2688)
JUNIPER TRAILS UNIT 7-A
PORTION W 1/2 SECTION 29
T19N - R19E