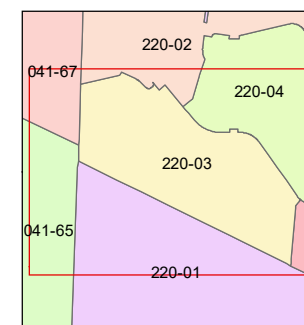
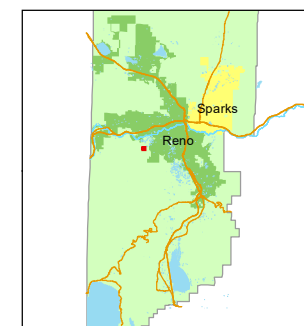


STATE OF NEVADA
WASHOE COUNTY
ASSESSOR'S OFFICE

1001 East Ninth Street, Building D
Reno, Nevada 89512
(775) 328-2231



1 inch = 100 feet



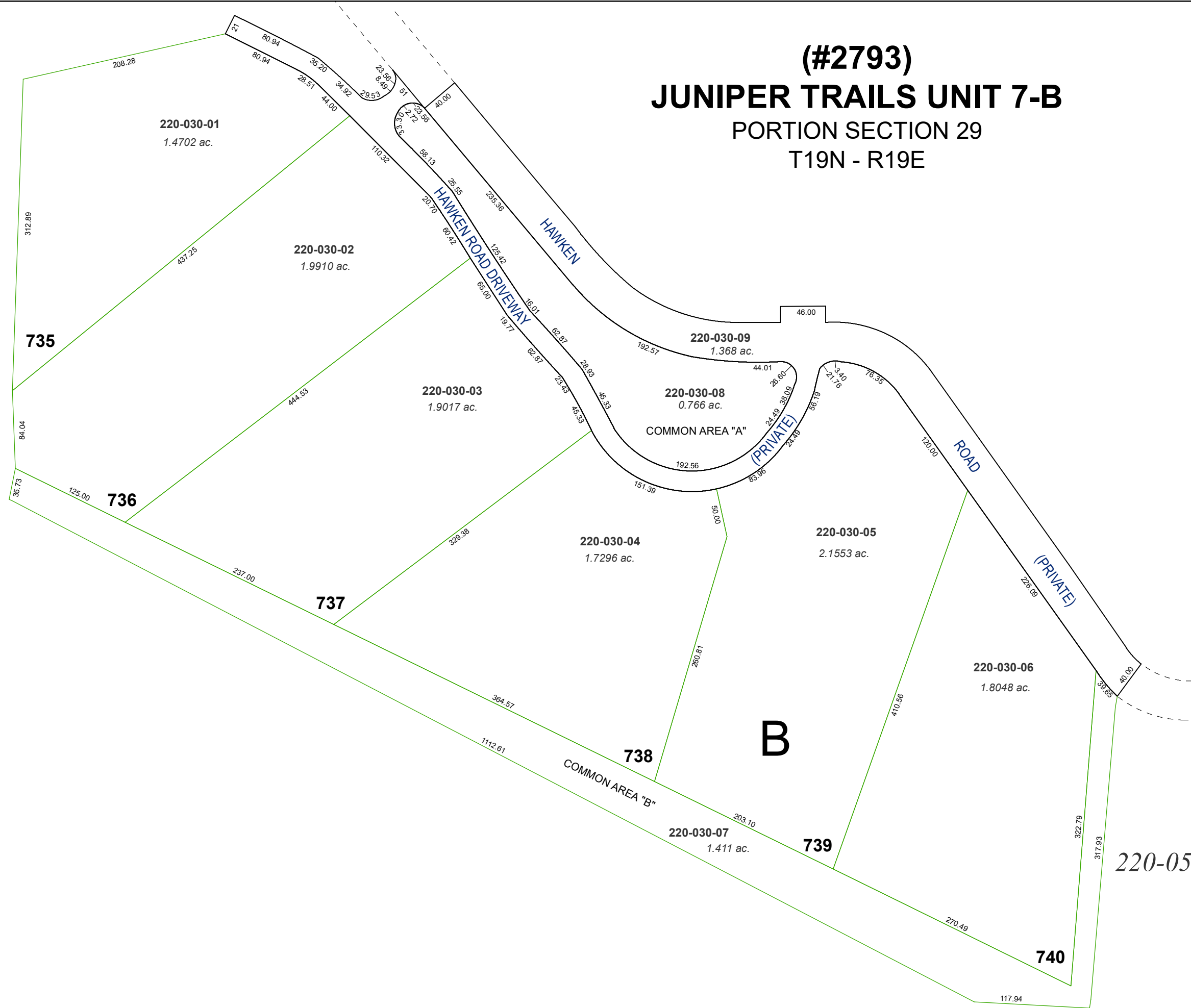
created by: JRA 11/23/2020

updated: _____

area previously shown on map(s):
041-45

NOTE: This map was prepared for the use of the Washoe County Assessor for assessment and illustrative purposes only. It does not represent a survey of the premises. No liability is assumed as to the sufficiency or accuracy of the data delineated hereon.

(#2793)
JUNIPER TRAILS UNIT 7-B
PORTION SECTION 29
T19N - R19E



735

736

737

738

739

740

B

220-05