

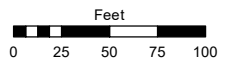
**(#2688)**  
**JUNIPER TRAILS UNIT 7-A**  
 PORTION W 1/2 SECTION 29  
 T19N - R19E

Assessor's Map Number

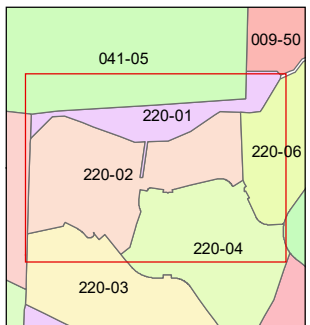
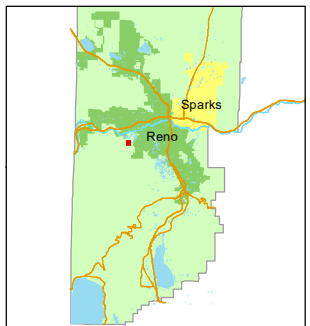
**220-02**

STATE OF NEVADA  
**WASHOE COUNTY**  
**ASSESSOR'S OFFICE**

1001 East Ninth Street, Building D  
 Reno, Nevada 89512  
 (775) 328-2231



1 inch = 100 feet

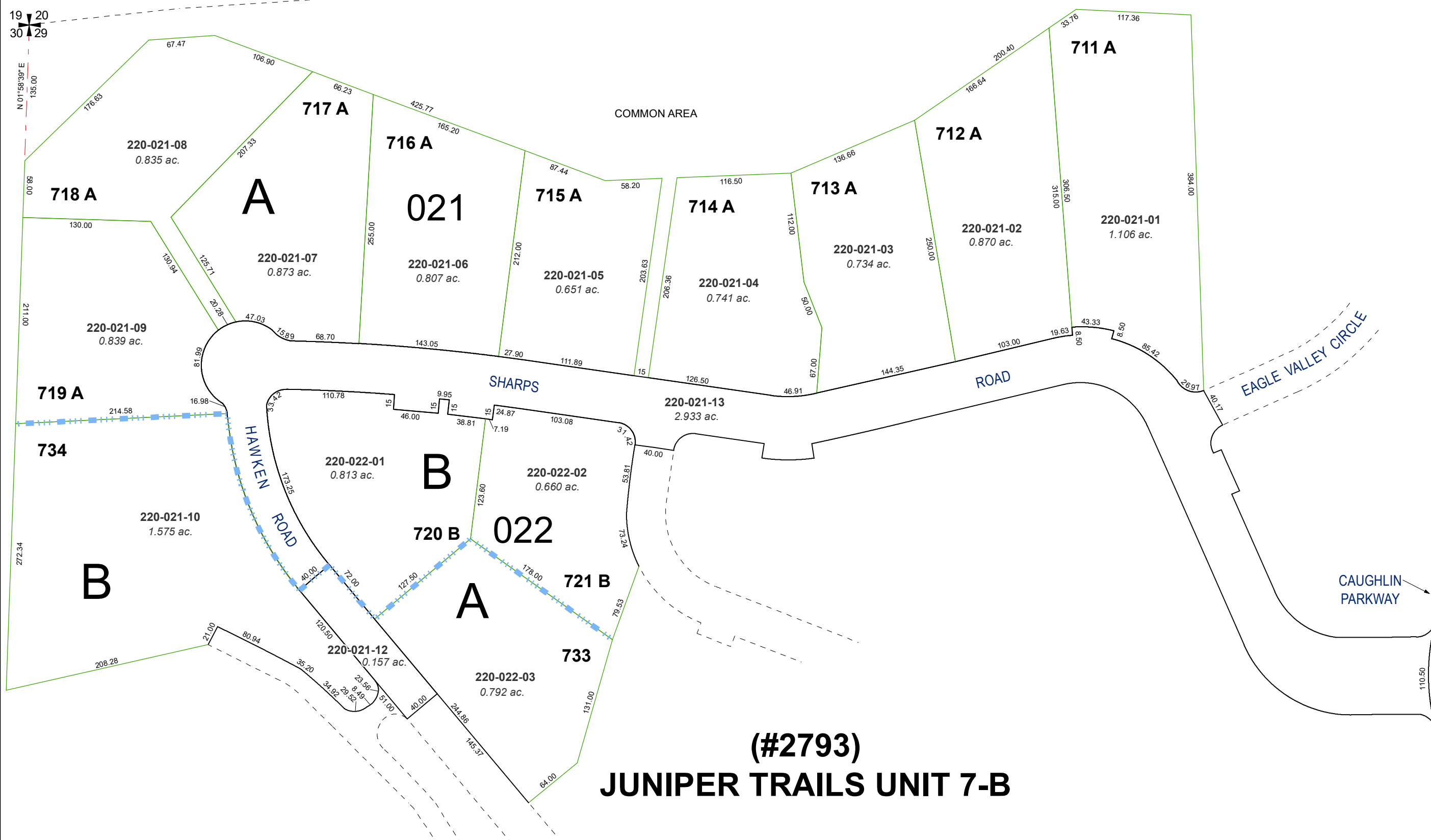


created by: JRA 12/01/2020

updated: \_\_\_\_\_

area previously shown on map(s):  
041-42

NOTE: This map was prepared for the use of the Washoe County Assessor for assessment and illustrative purposes only. It does not represent a survey of the premises. No liability is assumed as to the sufficiency or accuracy of the data delineated herein.



**(#2793)**  
**JUNIPER TRAILS UNIT 7-B**