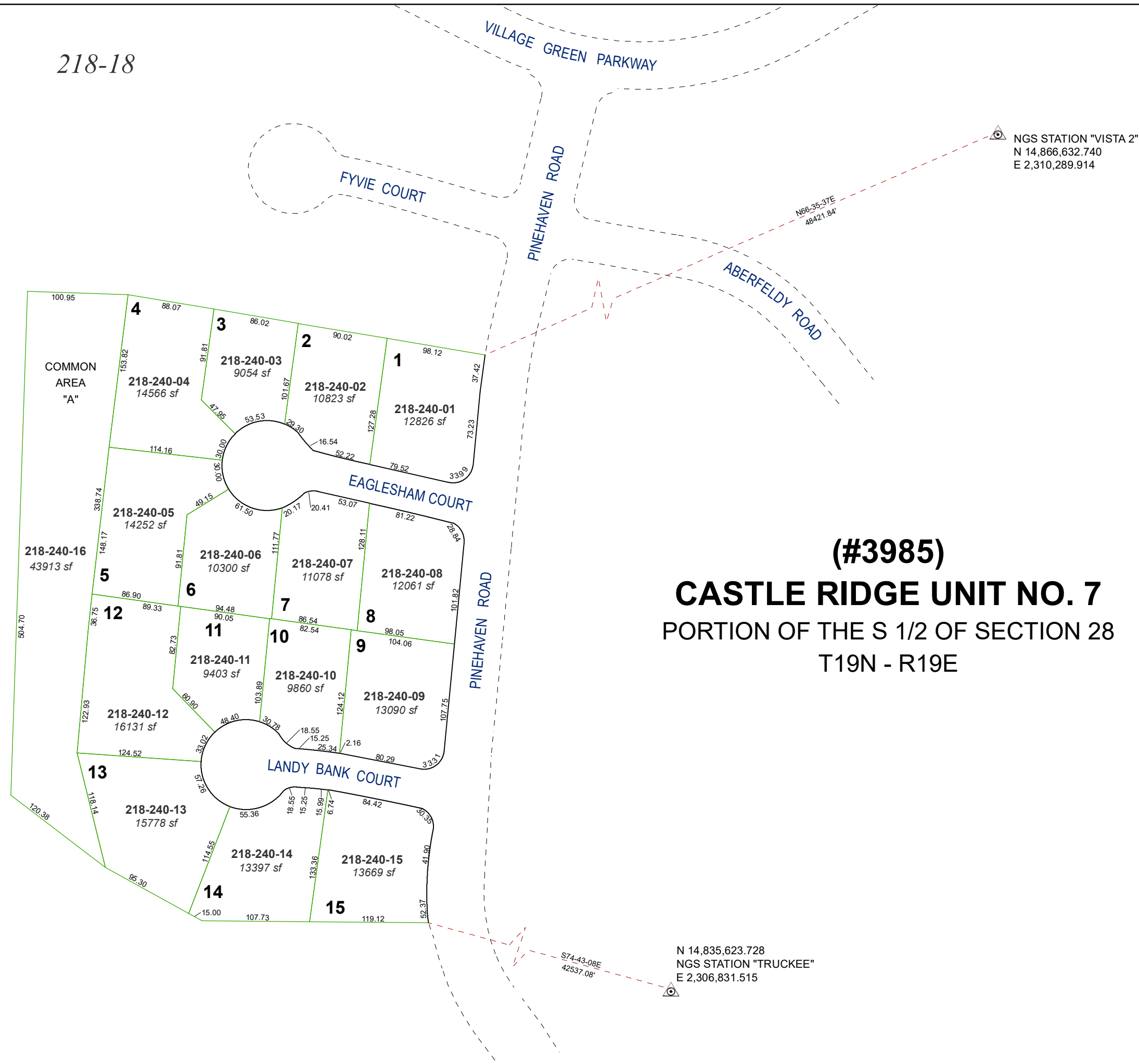


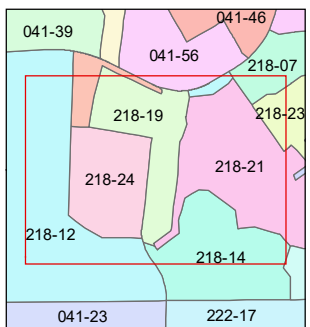
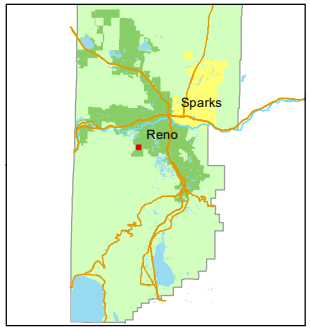
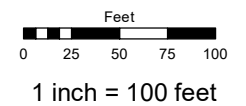
218-18



**(#3985)**  
**CASTLE RIDGE UNIT NO. 7**  
 PORTION OF THE S 1/2 OF SECTION 28  
 T19N - R19E

Assessor's Map Number  
**218-24**

STATE OF NEVADA  
**WASHOE COUNTY**  
**ASSESSOR'S OFFICE**  
 1001 East Ninth Street, Building D  
 Reno, Nevada 89512  
 (775) 328-2231



created by: JRA 11/18/2020  
 updated: \_\_\_\_\_

area previously shown on map(s):  
218-12

NOTE: This map was prepared for the use of the Washoe County Assessor for assessment and illustrative purposes only. It does not represent a survey of the premises. No liability is assumed as to the sufficiency or accuracy of the data delineated hereon.