

**(#3851)**  
**CASTLE RIDGE UNIT NO. 6**  
 A PLANNED UNIT DEVELOPMENT  
 PORTION OF S 1/2 OF SECTION 28  
 T19N - R19E

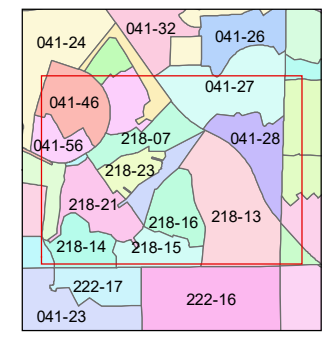
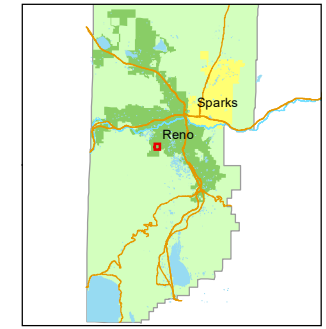


Assessor's Map Number  
**218-22**

STATE OF NEVADA  
**WASHOE COUNTY**  
 ASSESSOR'S OFFICE  
 1001 East Ninth Street, Building D  
 Reno, Nevada 89512  
 (775) 328-2231



Feet  
 0 50 100 150 200  
 1 inch = 200 feet



created by: JRA 11/13/2020  
 updated: \_\_\_\_\_  
 area previously shown on map(s):  
218-12

NOTE: This map was prepared for the use of the Washoe County Assessor for assessment and illustrative purposes only. It does not represent a survey of the premises. No liability is assumed as to the sufficiency or accuracy of the data delineated hereon.