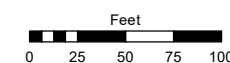


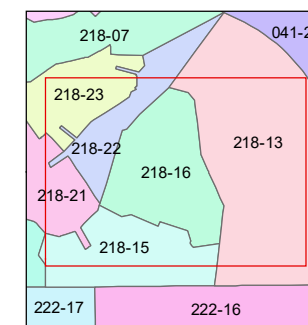
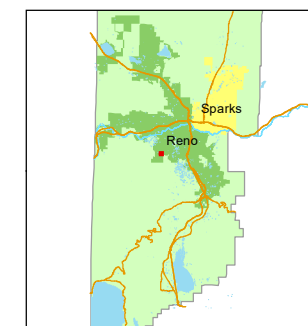
(#3369)
CASTLE RIDGE UNIT NO. 3
A PLANNED UNIT DEVELOPMENT
A PORTION OF THE SE 1/4 OF SECTION 28
T19N - R19E

STATE OF NEVADA
WASHOE COUNTY
ASSESSOR'S OFFICE

1001 East Ninth Street, Building D
Reno, Nevada 89512
(775) 328-2231



1 inch = 100 feet



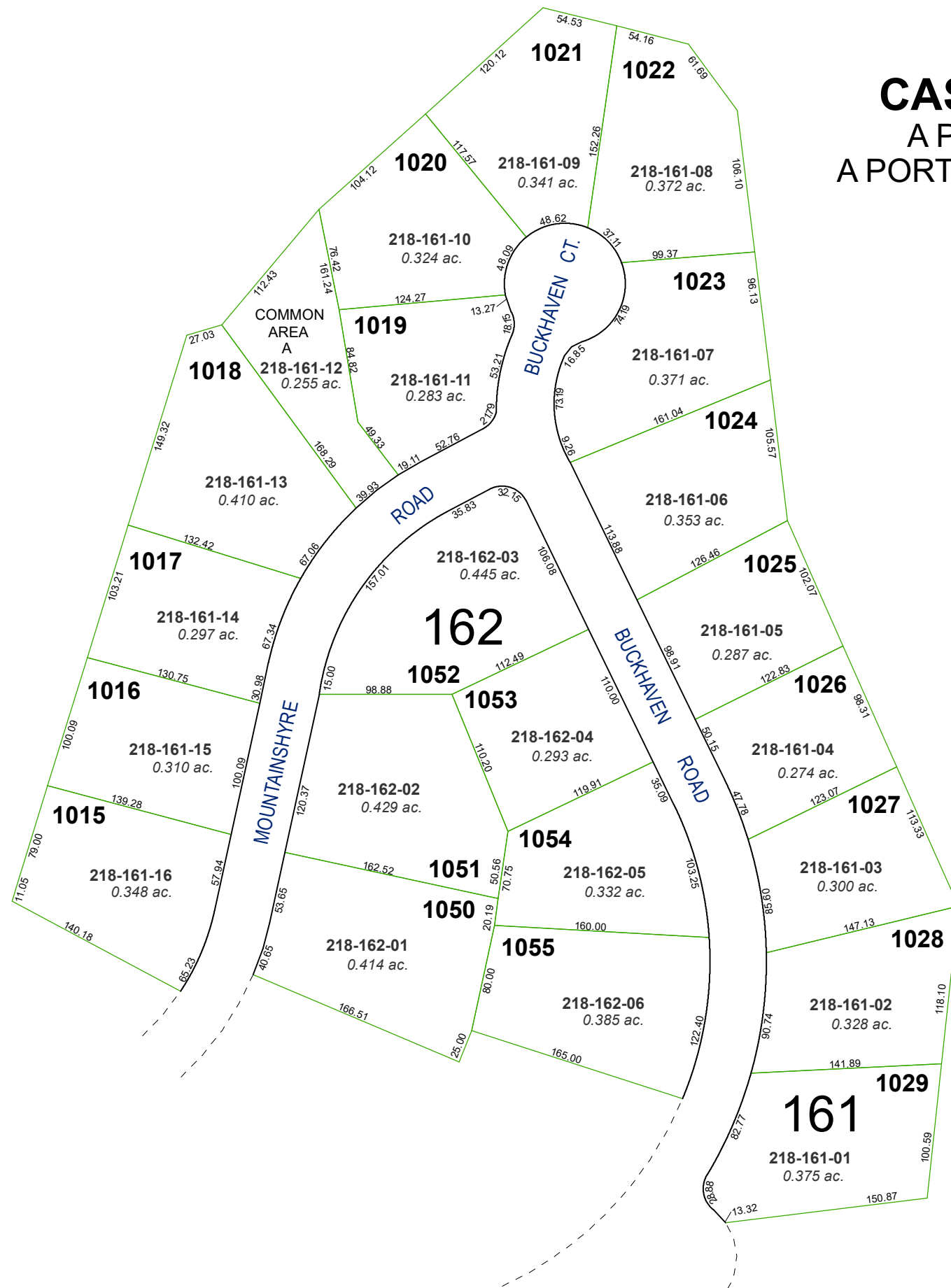
created by: JRA 11/18/2020

updated: _____

area previously shown on map(s):

041-24

NOTE: STREETS PARCELED ON 218-13



NOTE: This map was prepared for the use of the Washoe County Assessor for assessment and illustrative purposes only. It does not represent a survey of the premises. No liability is assumed as to the sufficiency or accuracy of the data delineated hereon.