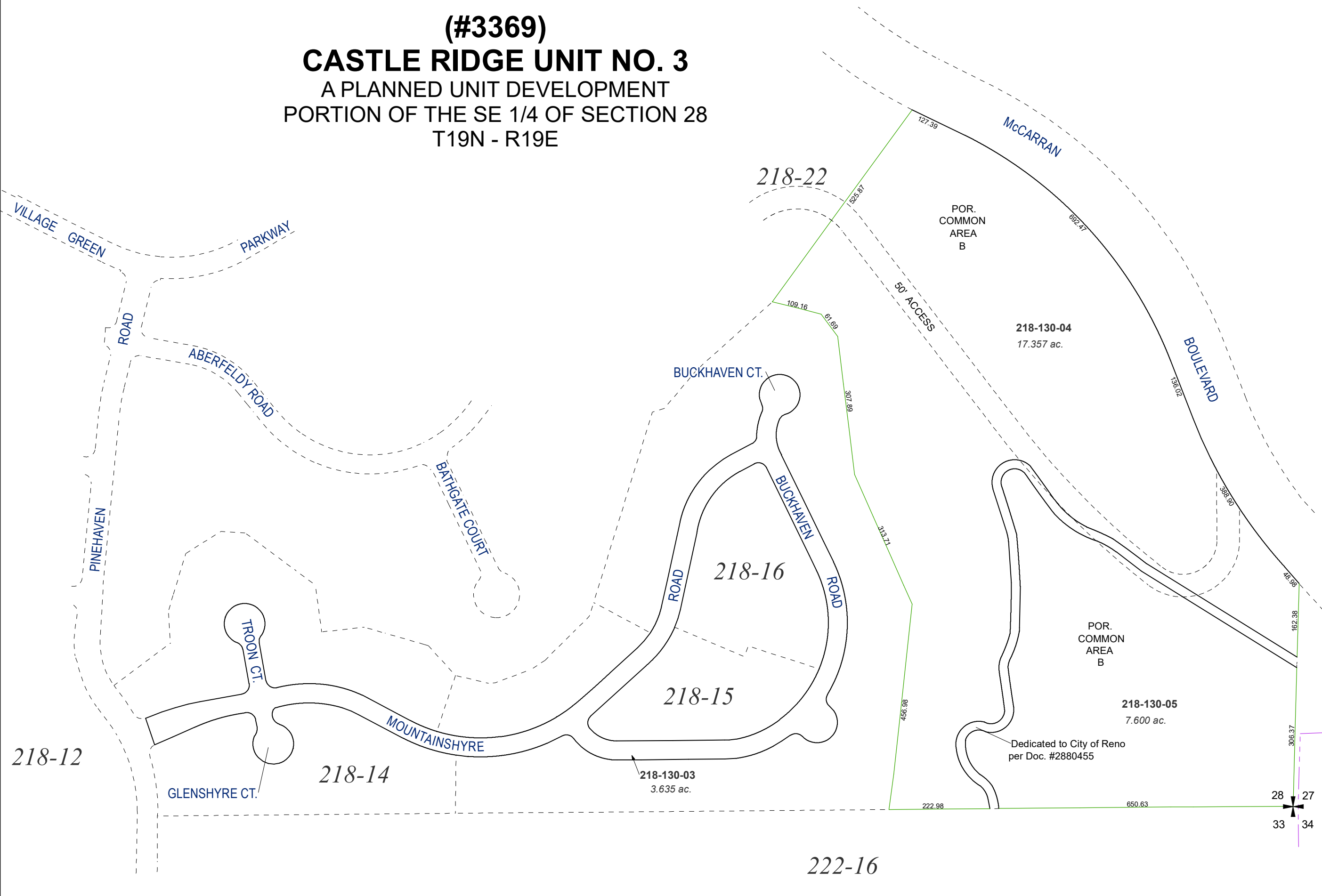
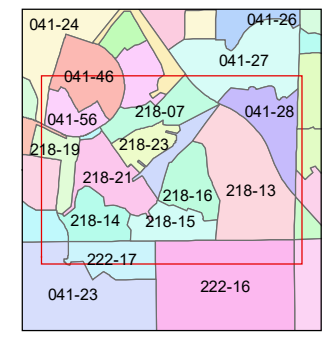
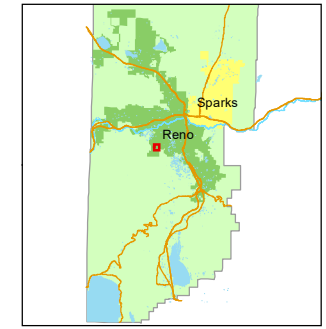
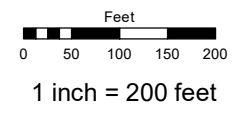


(#3369)
CASTLE RIDGE UNIT NO. 3
 A PLANNED UNIT DEVELOPMENT
 PORTION OF THE SE 1/4 OF SECTION 28
 T19N - R19E



Assessor's Map Number
218-13

STATE OF NEVADA
WASHOE COUNTY
ASSESSOR'S OFFICE
 1001 East Ninth Street, Building D
 Reno, Nevada 89512
 (775) 328-2231



created by: JRA 11/17/2020

updated: _____

area previously shown on map(s):
041-24

NOTE: This map was prepared for the use of the Washoe County Assessor for assessment and illustrative purposes only. It does not represent a survey of the premises. No liability is assumed as to the sufficiency or accuracy of the data delineated herein.