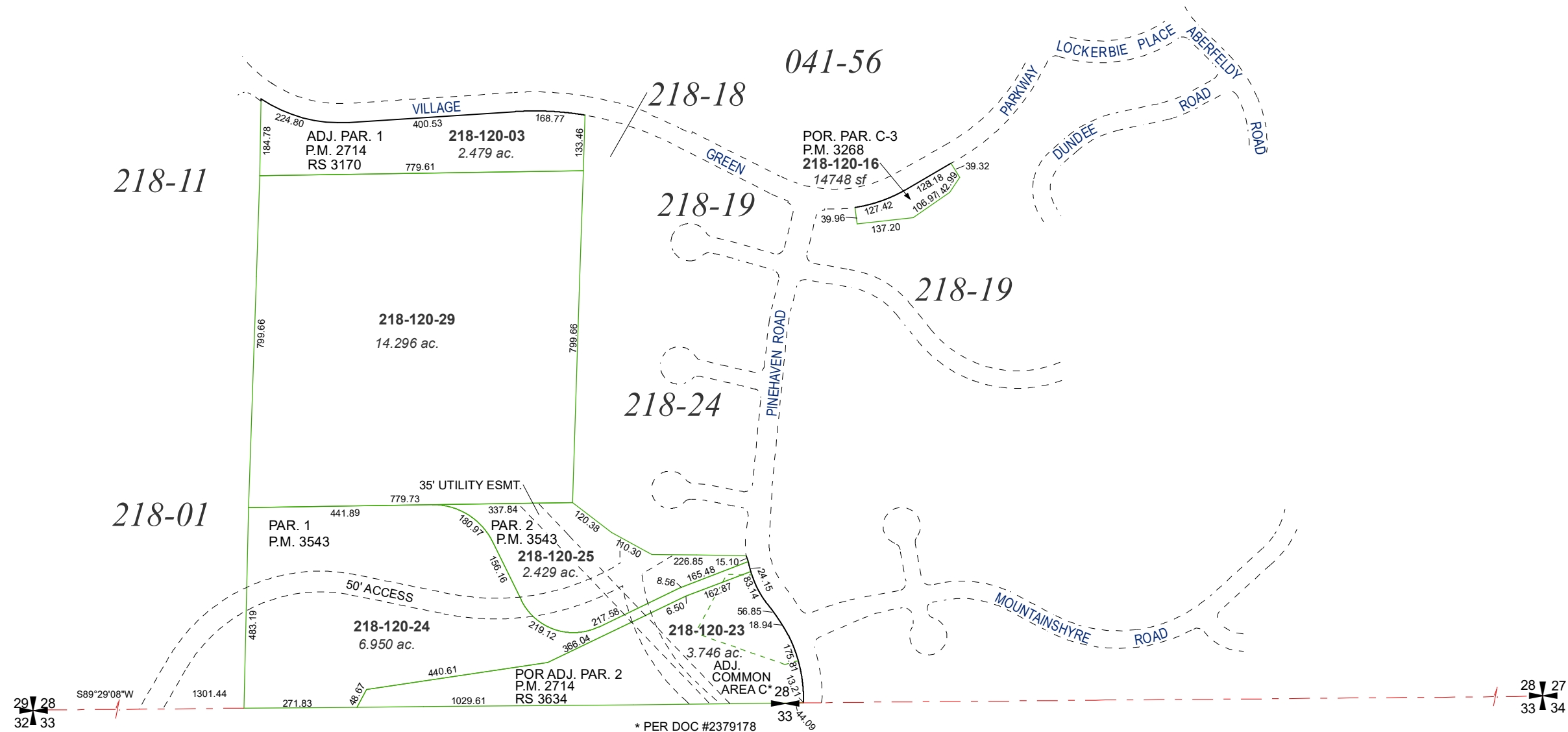
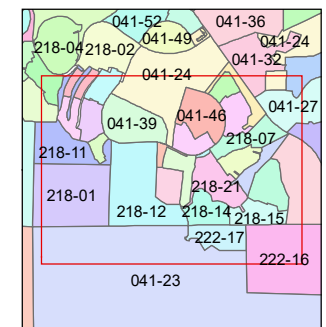
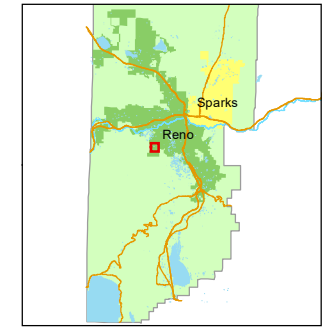
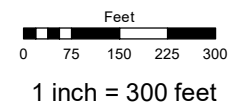


PORTION S½ SECTION 28
T19N - R19E



Assessor's Map Number
218-12

STATE OF NEVADA
WASHOE COUNTY
ASSESSOR'S OFFICE
1001 East Ninth Street, Building D
Reno, Nevada 89512
(775) 328-2231



created by: JRA 11/17/2020
updated: _____
area previously shown on map(s):
041-24

NOTE: This map was prepared for the use of the Washoe County Assessor for assessment and illustrative purposes only. It does not represent a survey of the premises. No liability is assumed as to the sufficiency or accuracy of the data delineated herein.