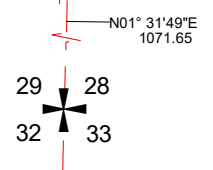
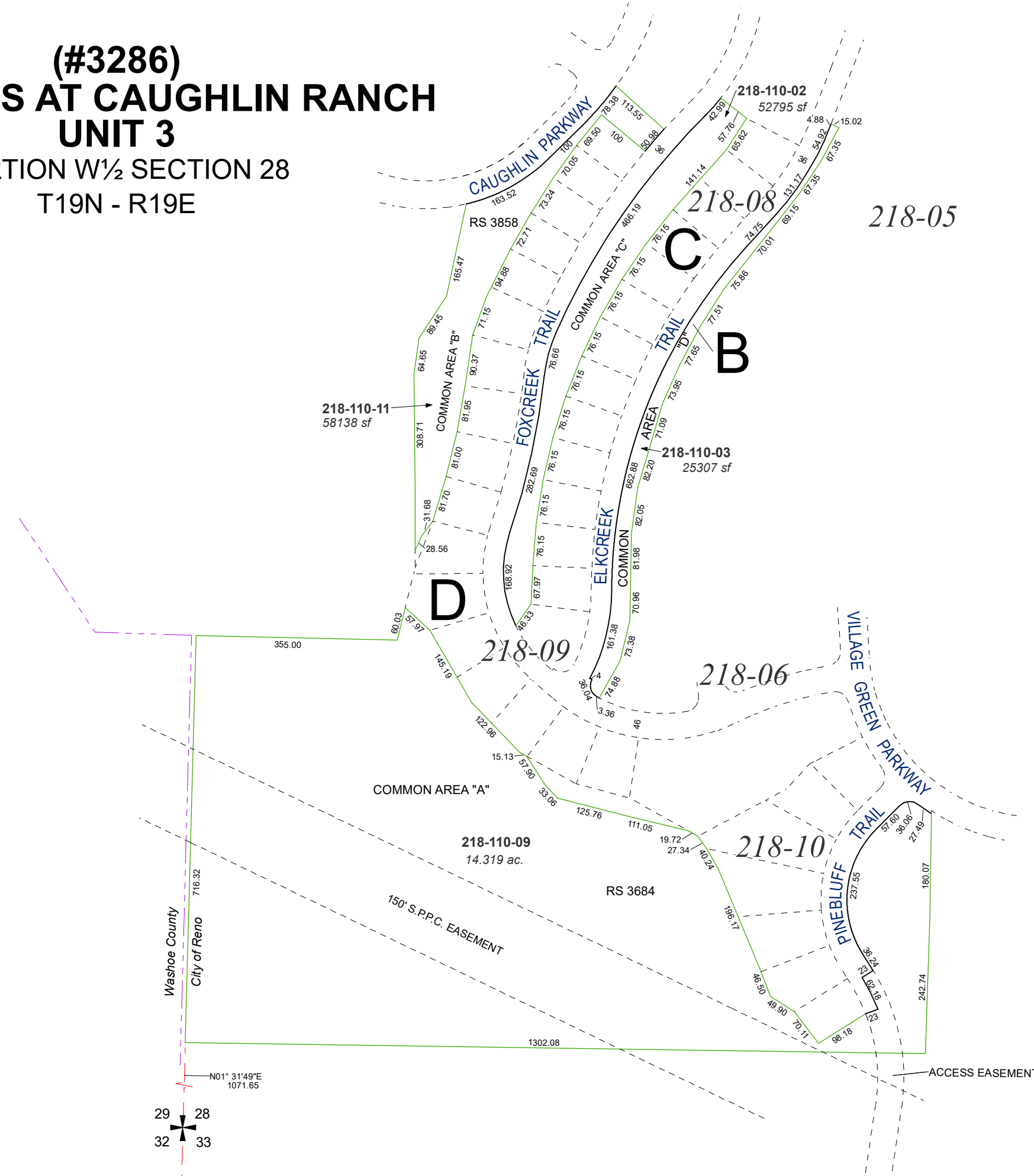


(#3286)
TRADITIONS AT CAUGHLIN RANCH
UNIT 3
 PORTION W½ SECTION 28
 T19N - R19E

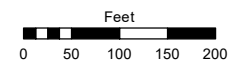


Assessor's Map Number

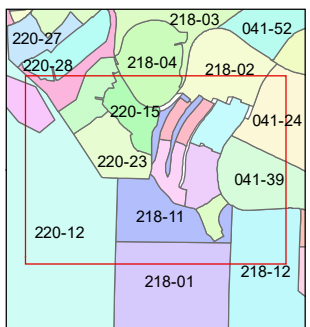
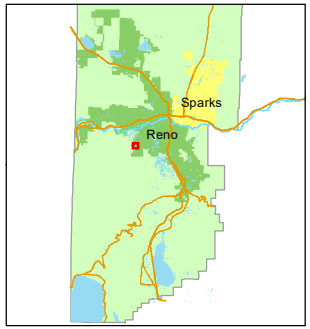
218-11

STATE OF NEVADA
WASHOE COUNTY
ASSESSOR'S OFFICE

1001 East Ninth Street, Building D
 Reno, Nevada 89512
 (775) 328-2231



1 inch = 200 feet



created by: JRA 11/17/2020

updated: _____

area previously shown on map(s):
041-24

NOTE: This map was prepared for the use of the Washoe County Assessor for assessment and illustrative purposes only. It does not represent a survey of the premises. No liability is assumed as to the sufficiency or accuracy of the data delineated herein.