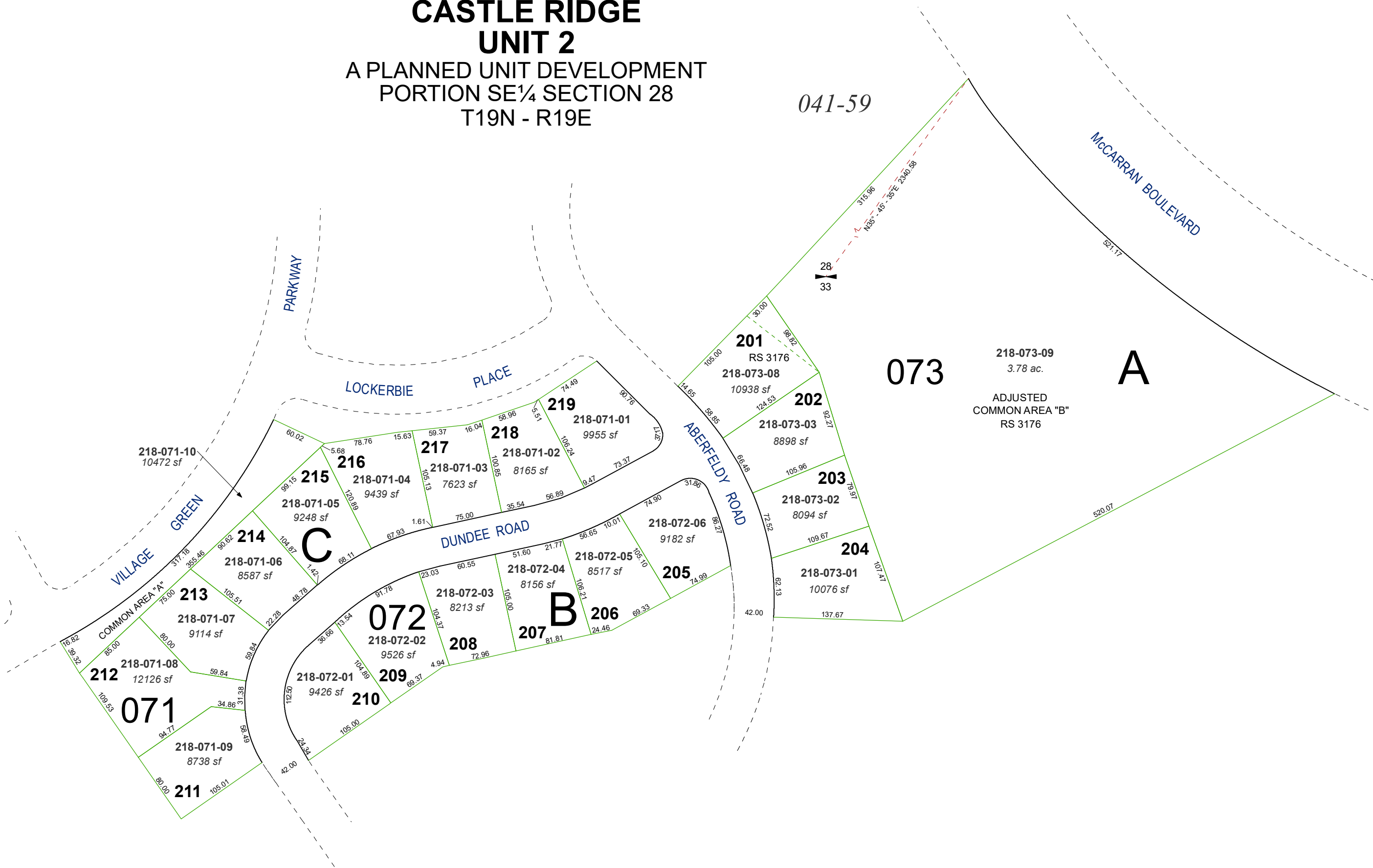


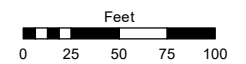
**(#3202)  
CASTLE RIDGE  
UNIT 2**

**A PLANNED UNIT DEVELOPMENT  
PORTION SE ¼ SECTION 28  
T19N - R19E**

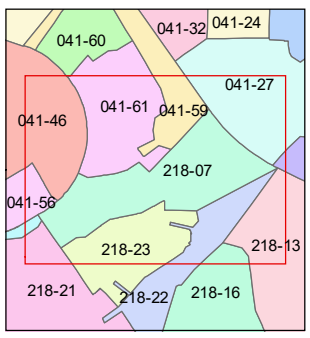
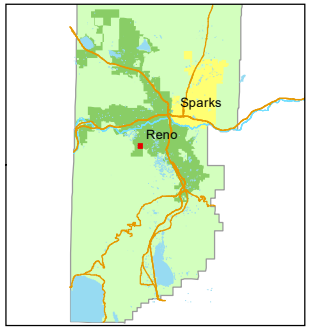


Assessor's Map Number  
**218-07**

STATE OF NEVADA  
**WASHOE COUNTY**  
ASSESSOR'S OFFICE  
1001 East Ninth Street, Building D  
Reno, Nevada 89512  
(775) 328-2231



1 inch = 100 feet



created by: JRA 11/05/2020  
updated: \_\_\_\_\_

area previously shown on map(s):  
041-24

NOTE: This map was prepared for the use of the Washoe County Assessor for assessment and illustrative purposes only. It does not represent a survey of the premises. No liability is assumed as to the sufficiency or accuracy of the data delineated hereon.