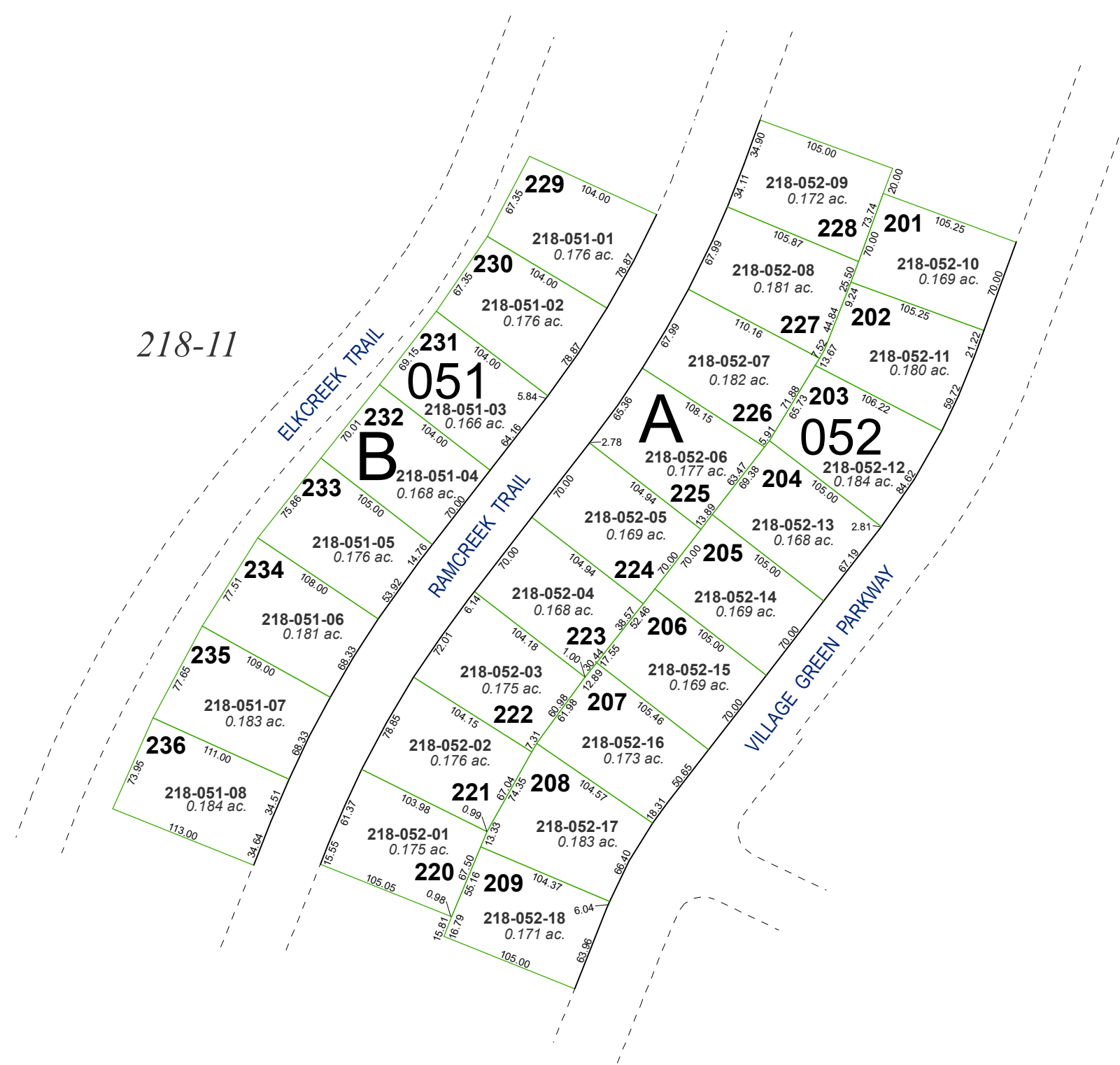


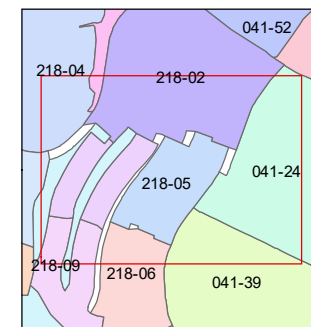
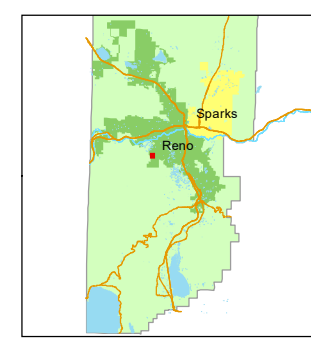
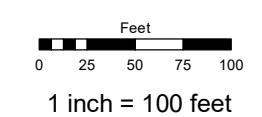
(#3163)
TRADITIONS AT CAUGHLIN RANCH
UNIT 2
 PORTION W½ SECTION 28
 T19N - R19E

218-11



Assessor's Map Number
218-05

STATE OF NEVADA
WASHOE COUNTY
ASSESSOR'S OFFICE
 1001 East Ninth Street, Building D
 Reno, Nevada 89512
 (775) 328-2231



created by: JRA 11/05/2020
 updated: _____
 area previously shown on map(s):
041-24

NOTE: This map was prepared for the use of the Washoe County Assessor for assessment and illustrative purposes only. It does not represent a survey of the premises. No liability is assumed as to the sufficiency or accuracy of the data delineated hereon.