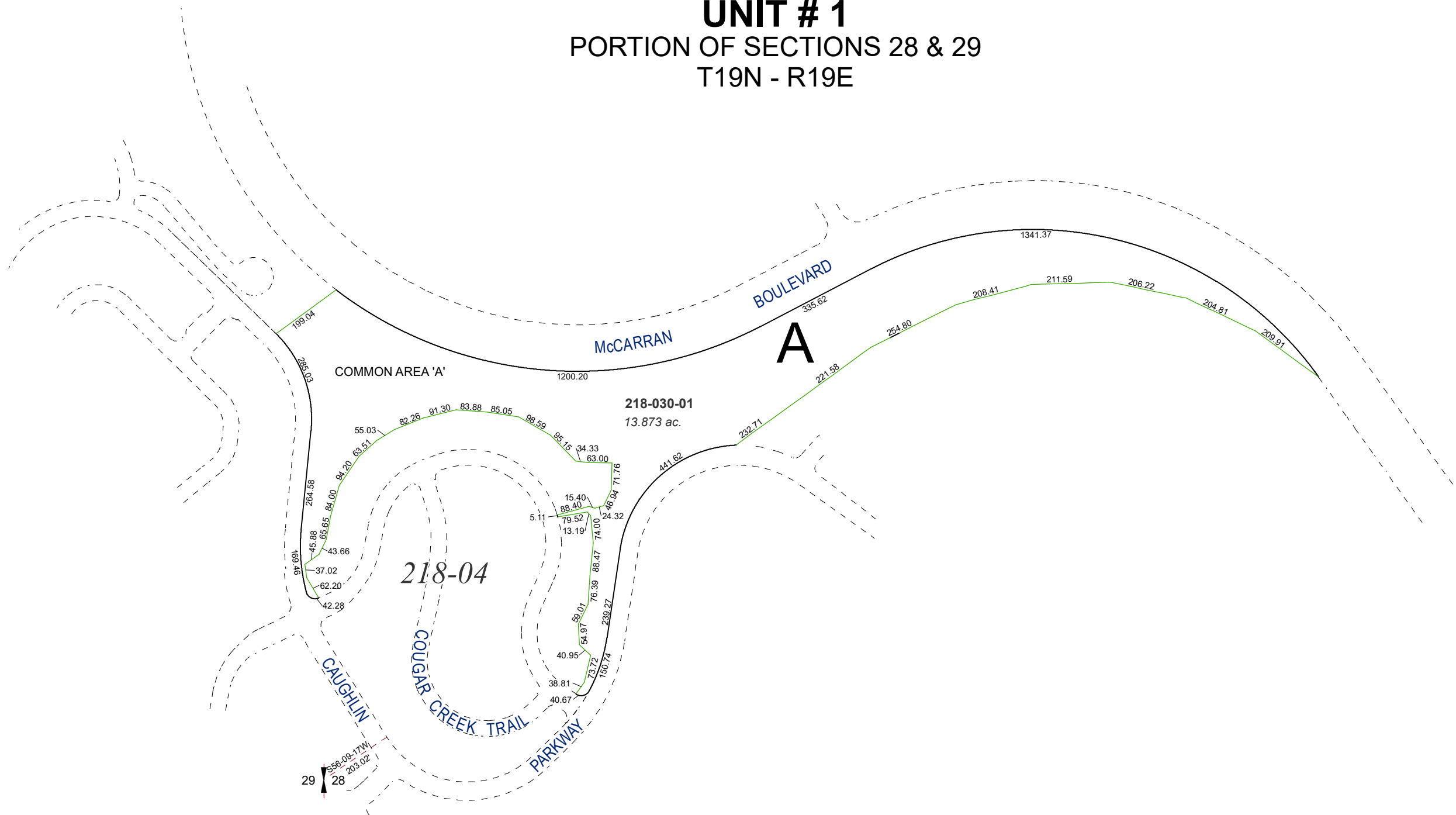
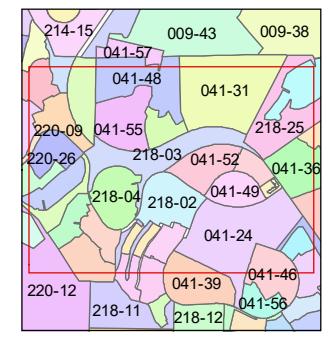
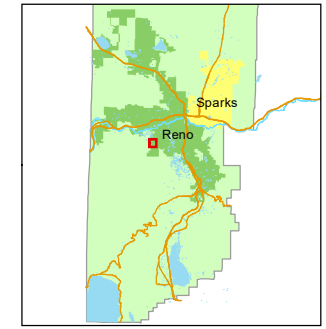
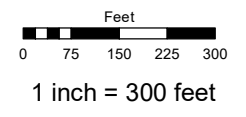


(#3129)
CREEKRIDGE NORTH
UNIT # 1
 PORTION OF SECTIONS 28 & 29
 T19N - R19E



Assessor's Map Number
218-03

STATE OF NEVADA
WASHOE COUNTY
ASSESSOR'S OFFICE
 1001 East Ninth Street, Building D
 Reno, Nevada 89512
 (775) 328-2231



created by: JRA 10/29/2020
 updated: _____
 area previously shown on map(s):
041-24

NOTE: This map was prepared for the use of the Washoe County Assessor for assessment and illustrative purposes only. It does not represent a survey of the premises. No liability is assumed as to the sufficiency or accuracy of the data delineated hereon.