

# (#3110) TRADITIONS AT CAUGHLIN RANCH UNIT 1

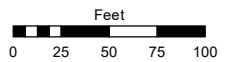
PORTION OF WEST 1/2 OF SECTION 28  
T19N - R19E

Assessor's Map Number

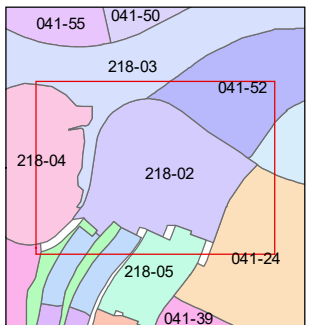
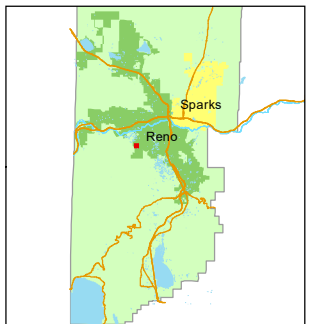
**218-02**

STATE OF NEVADA  
**WASHOE COUNTY**  
ASSESSOR'S OFFICE

1001 East Ninth Street, Building D  
Reno, Nevada 89512  
(775) 328-2231



1 inch = 100 feet



created by: JRA 10/22/2020

updated: \_\_\_\_\_

area previously shown on map(s):

041-24

NOTE: This map was prepared for the use of the Washoe County Assessor for assessment and illustrative purposes only. It does not represent a survey of the premises. No liability is assumed as to the sufficiency or accuracy of the data delineated hereon.

