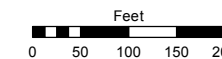


Assessor's Map Number

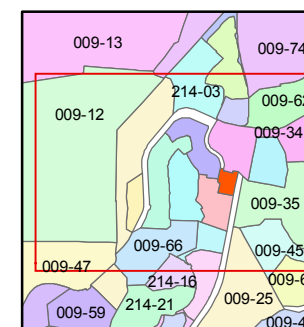
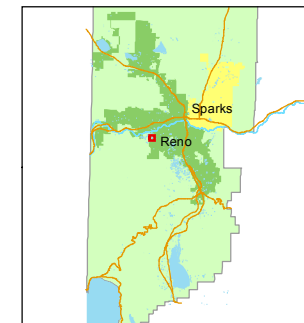
**214-09**

STATE OF NEVADA  
**WASHOE COUNTY**  
ASSESSOR'S OFFICE  
Joshua G. Wilson, Assessor

1001 East Ninth Street  
Building D  
Reno, Nevada 89512  
(775) 328-2231



1 inch = 200 feet

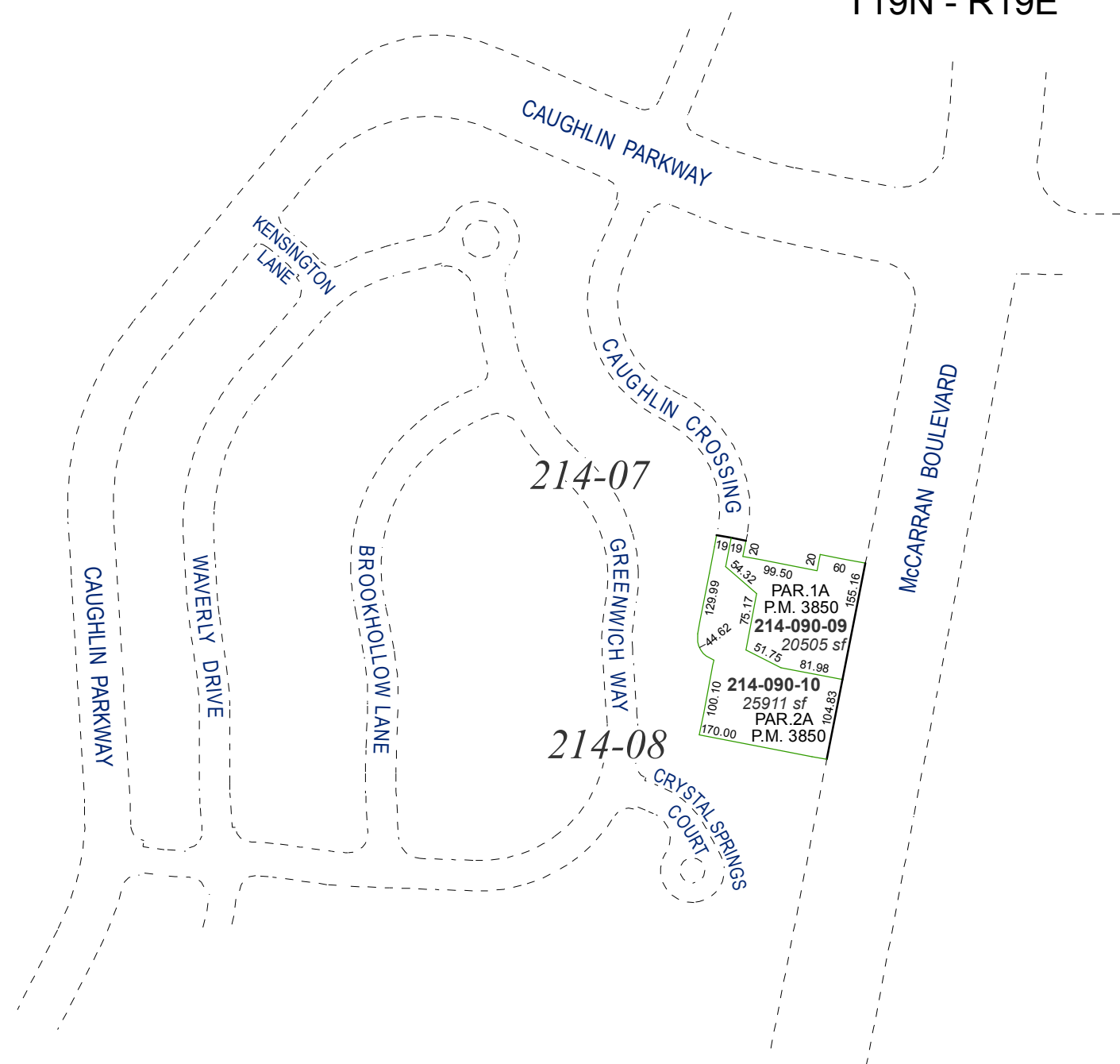


created by: EG 10/4/2013

last updated: \_\_\_\_\_

area previously shown on map(s)  
\_\_\_\_\_

PORTION OF SE¼ SECTION 20  
T19N - R19E



1919.28  
84.32  
99.50  
20  
80  
155.16  
PAR. 1A  
P.M. 3850  
**214-090-09**  
20505 sf  
51.75  
81.98  
129.99  
44.62  
75.17  
100.10  
170.00  
**214-090-10**  
25911 sf  
PAR. 2A  
P.M. 3850  
104.83

NOTE: This map was prepared for the use of the Washoe County Assessor for assessment and illustrative purposes only. It does not represent a survey of the premises. No liability is assumed as to the sufficiency or accuracy of the data delineated hereon.