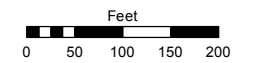


**(#3764)**  
**NORTHGATE UNIT NO. 18A**  
 PORTION OF SECTION 7, T19N - R19E &  
 PORTION OF SECTION 12, T19N - R18E

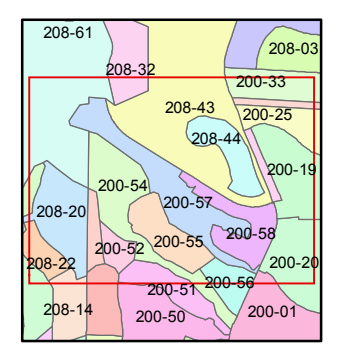
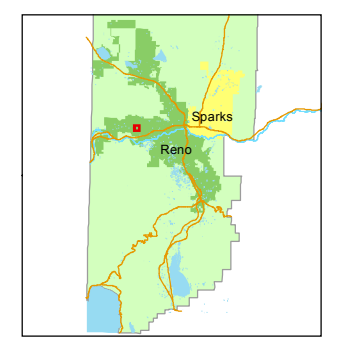
Assessor's Map Number  
**200-57**

STATE OF NEVADA  
**WASHOE COUNTY**  
**ASSESSOR'S OFFICE**  
 Joshua G. Wilson, Assessor

1001 East Ninth Street  
 Building D  
 Reno, Nevada 89512  
 (775) 328-2231



1 inch = 200 feet



created by: EG 11/14/2013

last updated: \_\_\_\_\_

area previously shown on map(s)  
200-01

NOTE: This map was prepared for the use of the Washoe County Assessor for assessment and illustrative purposes only. It does not represent a survey of the premises. No liability is assumed as to the sufficiency or accuracy of the data delineated hereon.