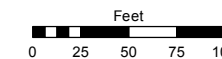


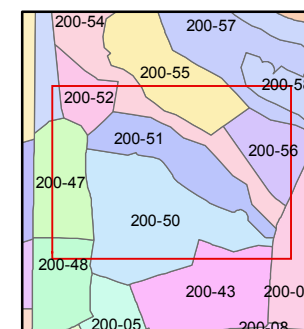
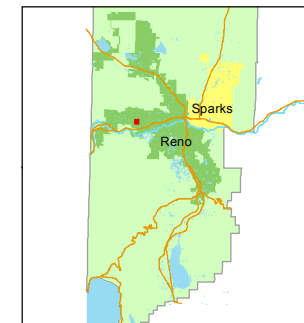
(#3226)
NORTHGATE UNIT 15A
PORTION OF SECTION 7
T19N-R19E

STATE OF NEVADA
WASHOE COUNTY
ASSESSOR'S OFFICE
Joshua G. Wilson, Assessor

1001 East Ninth Street
Building D
Reno, Nevada 89512
(775) 328-2231



1 inch = 100 feet



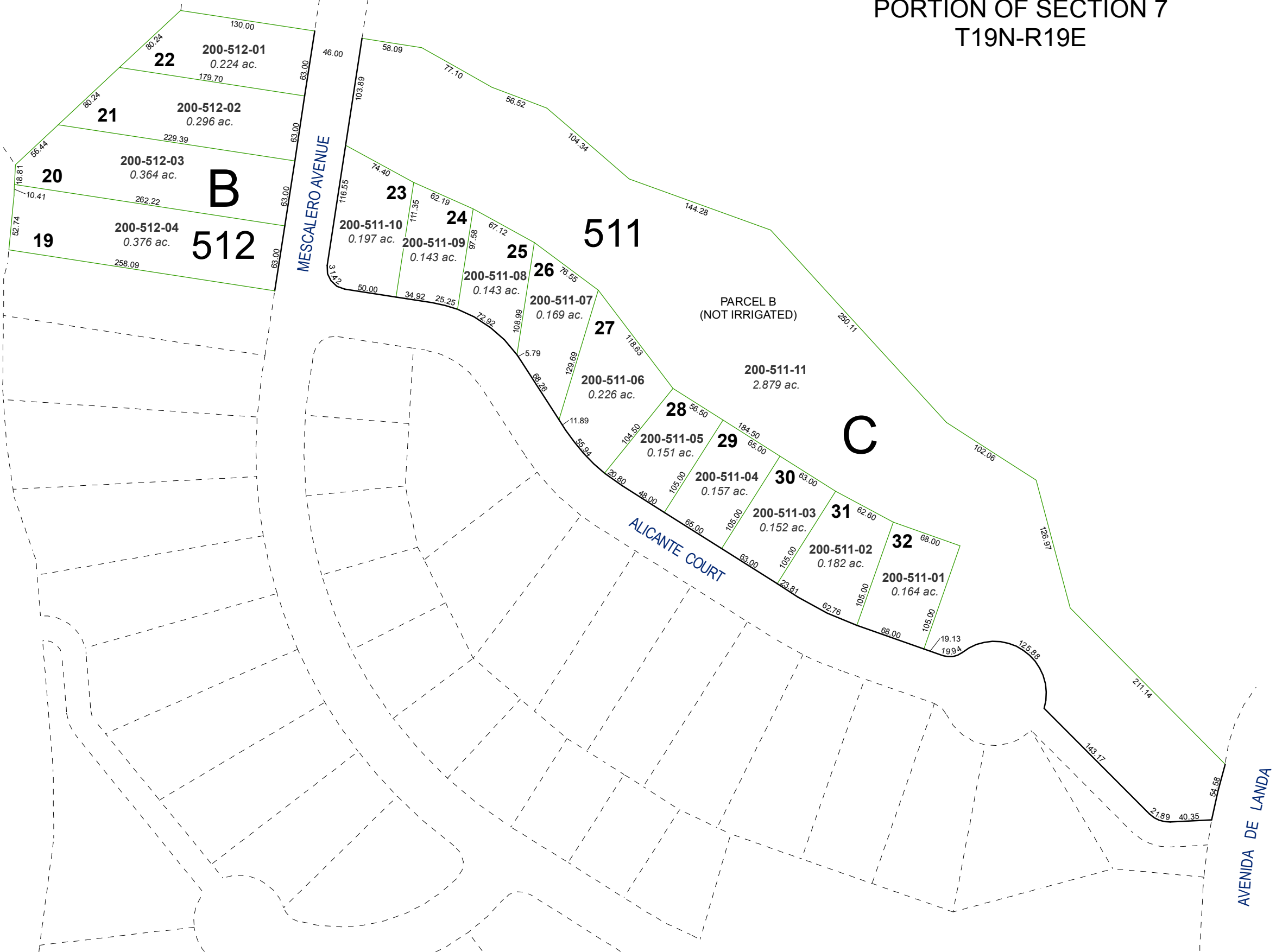
created by: EG 11/13/2013

last updated: _____

area previously shown on map(s)

200-01

NOTE: This map was prepared for the use of the Washoe County Assessor for assessment and illustrative purposes only. It does not represent a survey of the premises. No liability is assumed as to the sufficiency or accuracy of the data delineated hereon.



B
512

511

C

PARCEL B
(NOT IRRIGATED)