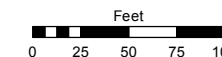


Assessor's Map Number

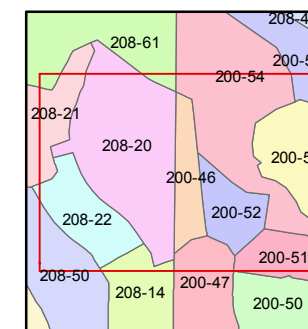
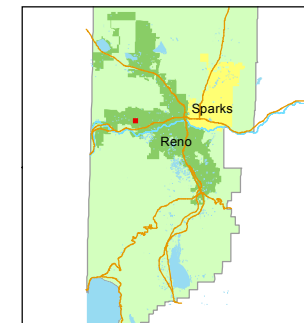
200-46

STATE OF NEVADA
WASHOE COUNTY
ASSESSOR'S OFFICE
Joshua G. Wilson, Assessor

1001 East Ninth Street
Building D
Reno, Nevada 89512
(775) 328-2231



1 inch = 100 feet



created by: EG 11/7/2013

last updated: _____

area previously shown on map(s)

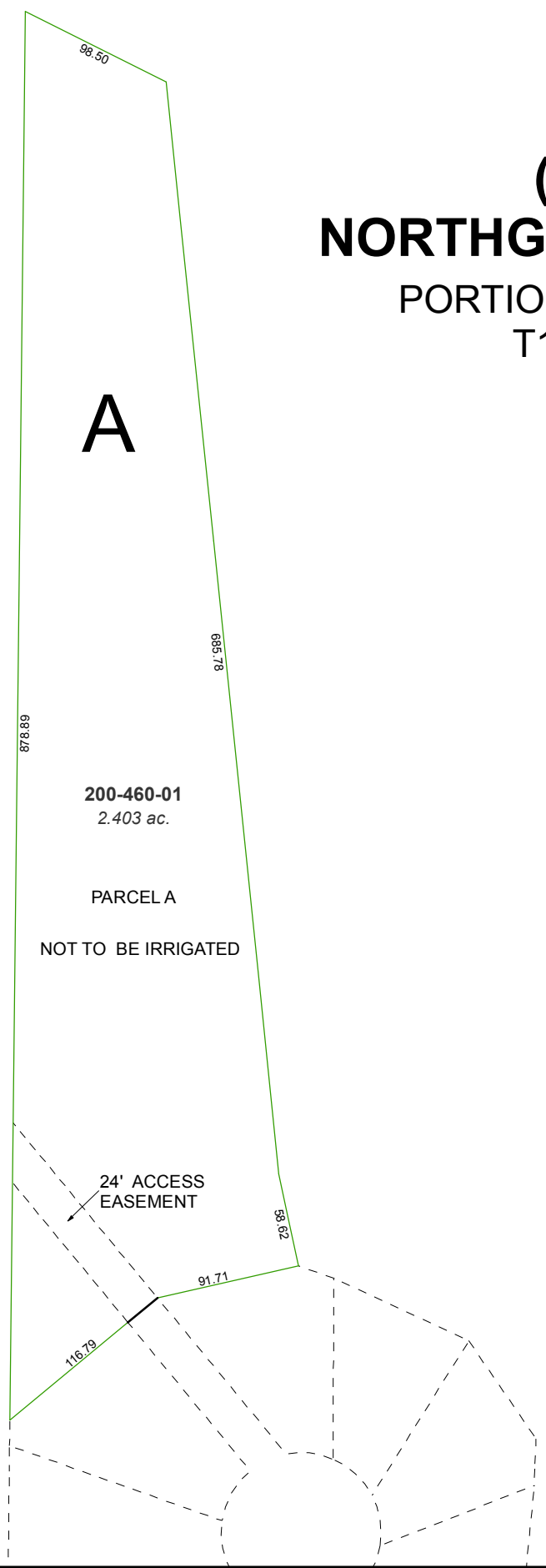
039-15

NOTE: This map was prepared for the use of the Washoe County Assessor for assessment and illustrative purposes only. It does not represent a survey of the premises. No liability is assumed as to the sufficiency or accuracy of the data delineated hereon.

(#3161) NORTHGATE - UNIT 14C

PORTION OF SECTION 7 T19N - R19E

A



200-460-01
2.403 ac.

PARCEL A
NOT TO BE IRRIGATED

24' ACCESS
EASEMENT