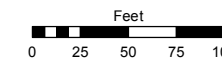


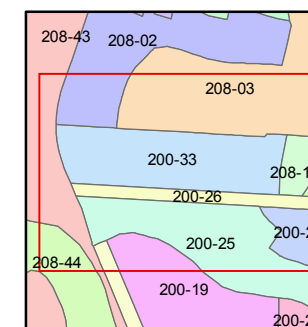
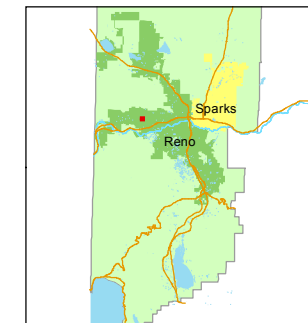
**(#2976)**  
**NORTHGATE UNIT NO. 7D**  
PORTION OF SECTIONS 6 & 7  
T19N - R19E

STATE OF NEVADA  
**WASHOE COUNTY**  
ASSESSOR'S OFFICE  
Joshua G. Wilson, Assessor

1001 East Ninth Street  
Building D  
Reno, Nevada 89512  
(775) 328-2231



1 inch = 100 feet



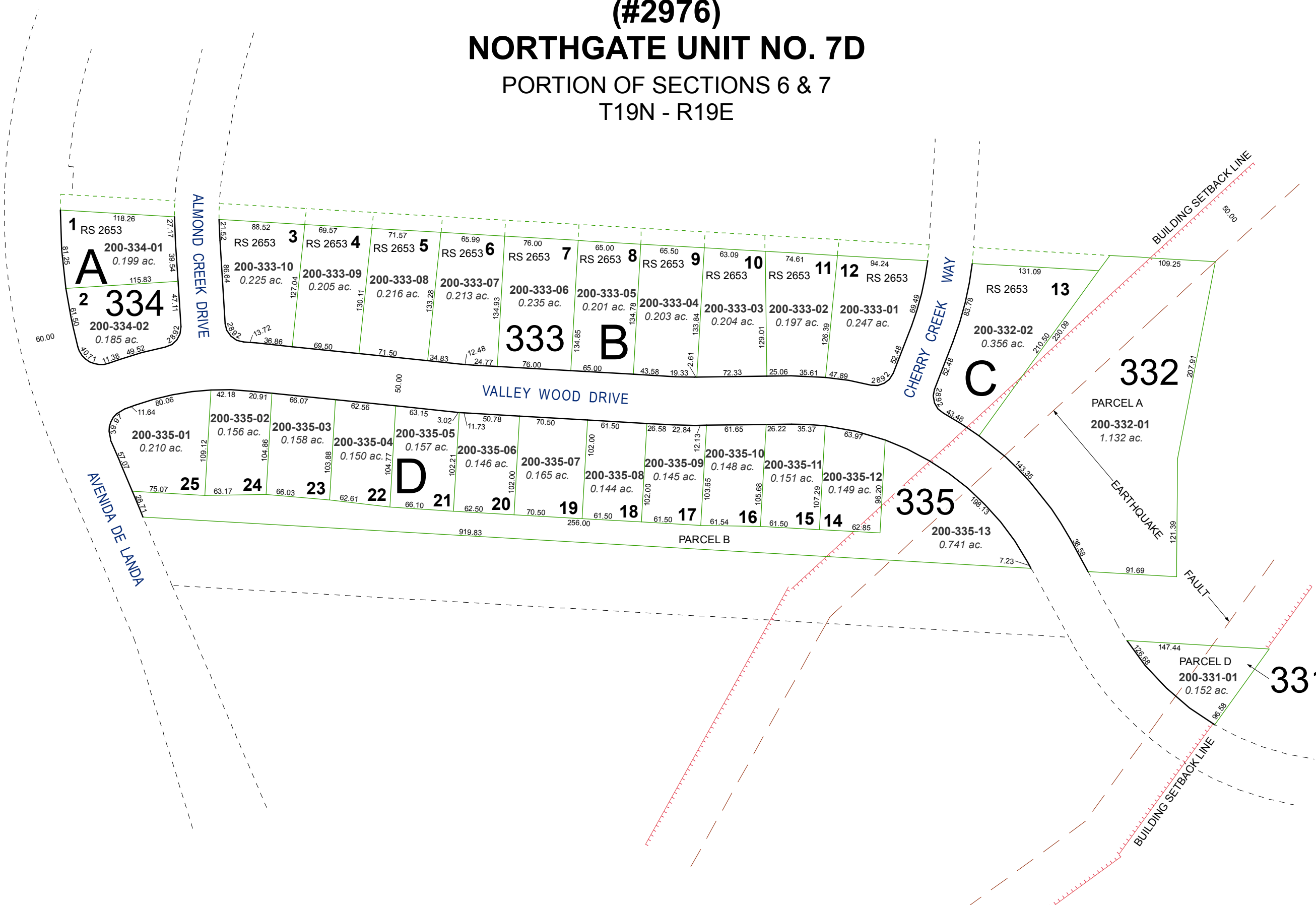
created by: EG 11/5/2013

last updated: \_\_\_\_\_

area previously shown on map(s)

039-80

NOTE: This map was prepared for the use of the Washoe County Assessor for assessment and illustrative purposes only. It does not represent a survey of the premises. No liability is assumed as to the sufficiency or accuracy of the data delineated hereon.



**1** RS 2653  
**A**  
200-334-01  
0.199 ac.  
200-334-02  
0.185 ac.

**3** RS 2653  
200-333-10  
0.225 ac.

**4** RS 2653  
200-333-09  
0.205 ac.

**5** RS 2653  
200-333-08  
0.216 ac.

**6** RS 2653  
200-333-07  
0.213 ac.

**7** RS 2653  
200-333-06  
0.235 ac.

**8** RS 2653  
200-333-05  
0.201 ac.

**9** RS 2653  
200-333-04  
0.203 ac.

**10** RS 2653  
200-333-03  
0.204 ac.

**11** RS 2653  
200-333-02  
0.197 ac.

**12** RS 2653  
200-333-01  
0.247 ac.

**B**  
**333**

**C**  
RS 2653  
200-332-02  
0.356 ac.

**332**  
PARCEL A  
200-332-01  
1.132 ac.

**D**  
200-335-01  
0.210 ac.

200-335-02  
0.156 ac.

200-335-03  
0.158 ac.

200-335-04  
0.150 ac.

200-335-05  
0.157 ac.

200-335-06  
0.146 ac.

200-335-07  
0.165 ac.

200-335-08  
0.144 ac.

200-335-09  
0.145 ac.

200-335-10  
0.148 ac.

200-335-11  
0.151 ac.

200-335-12  
0.149 ac.

**335**  
200-335-13  
0.741 ac.

PARCEL B

**331**  
PARCEL D  
200-331-01  
0.152 ac.